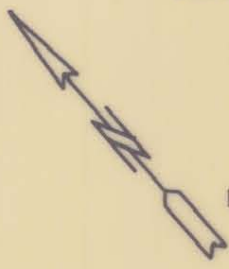


GRALOCK ASSOCIATES

DEED : 5010-449

41



18+00

17+00

FORD RD. S 39°02'17" W

NATIONS

EXIST. DITCHLINE R/W

WESTINGHOUSE BLVD. -L-

IMPERIAL FIRE HOSE COMPANY

42



R=294.26'
L=242.45'
CHD=235.65'
S 15°26'04" W

R=308.26'
L=253.99'
CHD=246.86'
N 15°26'04" E

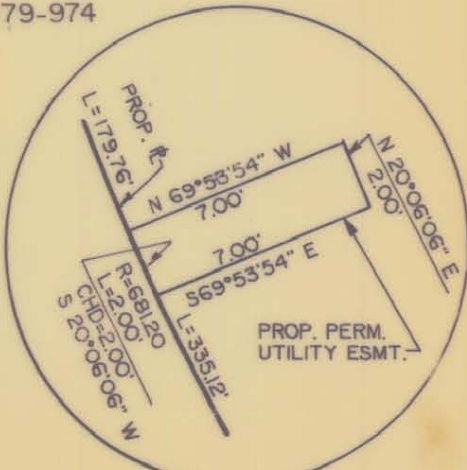
R=681.20'
L=516.89'
CHD=504.57'
N 13°34'05" E

R=681.20'
L=179.76'
CHD=179.24'
S 27°44'45" W

R=681.20'
L=335.12'
CHD=335.12'
S 35°50'50" W

R=11509.16'
L=354.80'
CHD=354.89'
N 61°58'18" W

R=11409.16'
L=381.69'
CHD=381.67'
S 62°02'48" E



DETAIL "B" N.T.S.

PROP. ACQUISITION

NOTE: Property corners shown circled were located by actual survey. Bearings and distances shown in parenthesis are based on deed information. Bearings are based on

N.C. COORDINATE SYSTEM

This map was prepared for the purpose of right-of-way or easement acquisition only, and is not intended to be a boundary survey of the property shown.

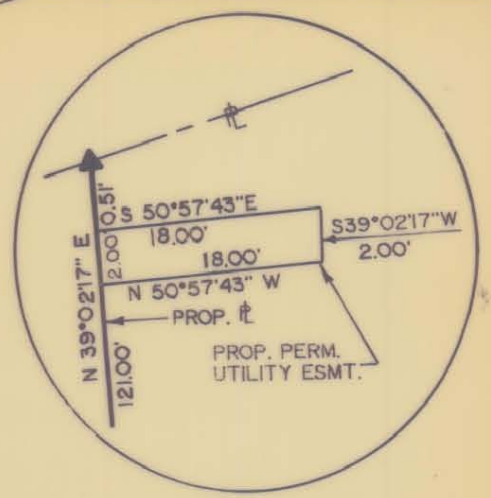
This plat was prepared under my supervision *Milton H. Dawes, Jr.*

N.C. Reg. Surveyor No. L-3112

PARCEL ID.# 205-051-25

		CHARLOTTE ENGINEERING DEPARTMENT	
REVISIONS	7-25-91 REV. CONST. ESMT.	WESTINGHOUSE BLVD. PHASE IV	JOB NO.
DRAWN BY SH			FILE NO.
CHECKED BY		IMPERIAL FIRE HOSE COMPANY	SHEET 42B/5
CITY ENGINEER			OF
		DATE SEPT. 5, 1990	SCALE 1" = 50'

DETAIL "A" N.T.S.



SEE DETAIL "A"

S 35°53'00" W
127.19'

PROP. TEMP. CONST. ESMT.

S 64°42'13" E
100.84'

S 63°28'53" E
41.34'

PROP. PERM. UTILITY ESMT.

R=11509.16'
L=354.80'
CHD=354.89'
N 61°58'18" W

R=11409.16'
L=381.69'
CHD=381.67'
S 62°02'48" E

N 50°57'43" W
8.00'

N 68°22'56" E
44.90'

S 59°47'48" E
99.39'

N 49°32'15" E
26.92'

PROP. TEMP. CONST. ESMT.

N 44°41'51" E
89.89'

SEE DETAIL "B"

N 22°13'38" E
71.65'

N 19°34'42" E
120.21'

EXIST. DITCHLINE R/W

EXIST. DITCHLINE R/W

EXIST. DITCHLINE R/W

EXIST. DITCHLINE R/W

EXIST. DITCHLINE R/W

EXIST. DITCHLINE R/W

EXIST. DITCHLINE R/W

EXIST. DITCHLINE R/W

EXIST. DITCHLINE R/W