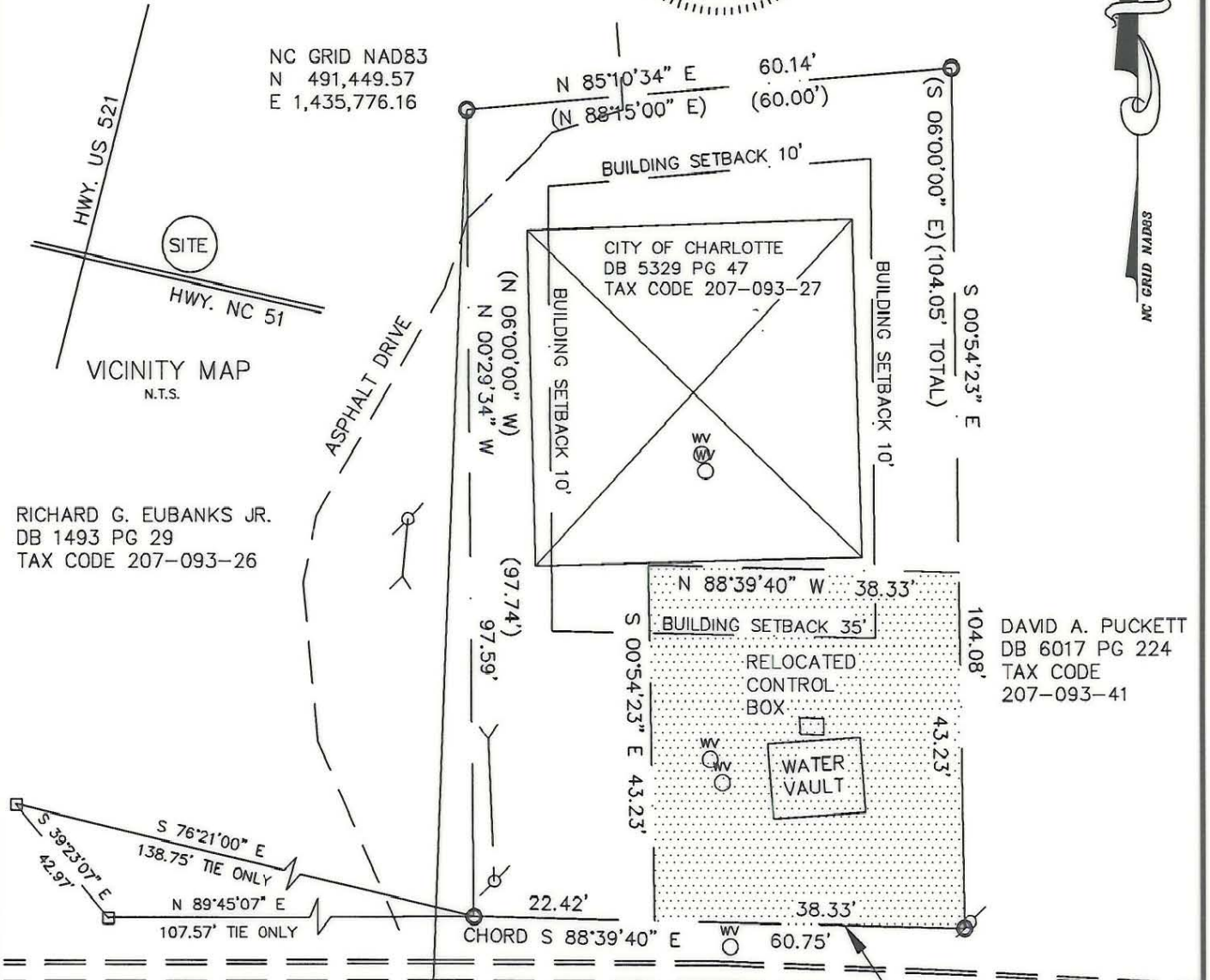
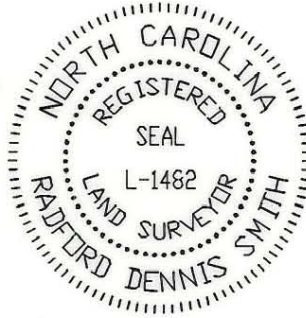


I, R. DENNIS SMITH, CERTIFY THAT THIS PLAT WAS PREPARED UNDER MY SUPERVISION AND THAT THE PLAT WAS PREPARED FOR THE PURPOSE OF A BOUNDARY AND PHYSICAL SURVEY AND THE FEATURES SHOWN HERE ON ARE CORRECT AND THE ERROR OF CLOSURE AS CALCULATED IS 1:10,000.

R. Dennis Smith 12-17-96
 R. DENNIS SMITH, NC R.L.S. L-1482 DATE



LEGEND

- IRON PIN FOUND
- IRON PIN SET
- POWER POLE
- WATER VALVE
- WATER TOWER
- PERMANENT EASEMENT
- R/W MONUMENT

REFERENCES:
 DB 5329 PG 47
 DB 1030 PG 239
 DB 1493 PG 29
 DB 6017 PG 224
 MB 21 PG 547
 NCDOT PROJECT 98102210

NCGS MONUMENT "STOP"
 NAD83
 GRID FACTOR 0.99985339339
 N 490,362.31'
 E 1,435,732.52'

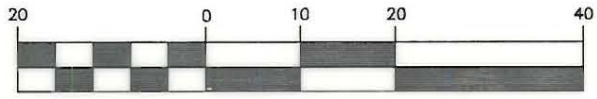
PREPARED BY:
 CITY OF CHARLOTTE
 ENGINEERING DEPARTMENT
 600 EAST FOURTH STREET
 CHARLOTTE, NC 28208
 704-336-2291

NC 51
 90' R/W

NOTE:

- 1) BEARINGS AND DISTANCES SHOWN IN PARENTHESES ARE BASED ON RECORDED DEED INFORMATION.
- 2) TOTAL AREA 6,085 SQ.FT.
- 3) AREA OF PERMANENT UTILITY EASEMENT 1,656 SQ.FT.
- 4) REMAINING AREA 4,429 SQ.FT.

GRAPHIC SCALE



(IN FEET)
 1 inch = 20 ft.

CHARLOTTE ENGINEERING DEPARTMENT		
REVISIONS	BOUNDARY AND PHYSICAL SURVEY FOR CITY OF CHARLOTTE	JOB NO. 93057
	PROPERTY AT TAX CODE 207-093-27	FILE NO.
12-16-96 PROPERTY LINE PER SIDE LOTS - M. STYERS DRAWN BY M. STYERS	PINEVILLE, MECKLENBURG CO., NC	CITY
CHECKED BY		SHEET 1
<i>(Signature)</i> SURVEY SUPVR.	DATE 11-96	OF 1
	SCALE 1"=20'	

207-093-23