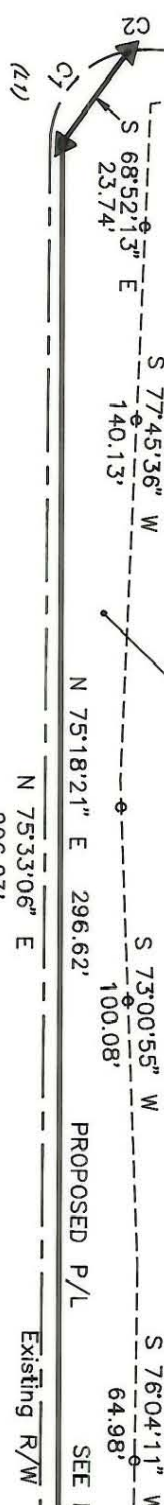




Regent Park Lane

Existing R/W S 14.22.54" E 580.60' (TOTAL) (S 12.14.00" E 600.56')

CURVE	RADIUS	ARC	CHORD	CHORD BEARING	CHORD BEARING AND DISTANCE
1	20.00'	27.81'	25.62'	N 64.36.53" W	(1) N 77.53.00" E 20.14'
2	20.00'	3.63'	3.63'	N 19.34.53" W	



508
 SHARON SOUTH
 HOMES ASSOC.
 DB 3192 PG 145
 DB 3192 PG 149
 MB 15 PG 39

508
 SHARON SOUTH
 HOMES ASSOC.
 DB 3192 PG 145
 DB 3192 PG 149
 MB 15 PG 39

511
 1600 SHARON PLACE
 UNIT OWNERS
 ASSOCIATION, INC.
 DB 4611 PG 922
 DB 4596 PG 619

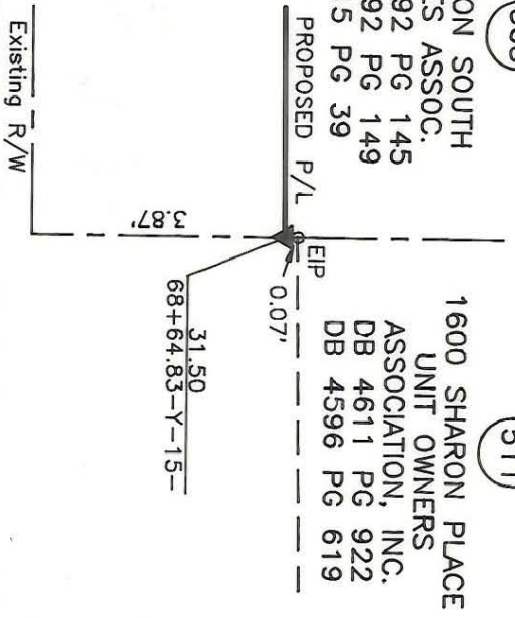
511
 1600 SHARON PLACE
 UNIT OWNERS
 ASSOCIATION, INC.
 DB 4611 PG 922
 DB 4596 PG 619

NOTE:

Property corners shown circled were located by actual survey. Bearings and distances shown in parenthesis are based on deed information. Bearings are based on N.C. State Plane Coordinate Systems

This map was prepared for the purpose of Fee Simple, Right of way or Easement acquisition only, and is not intended to be a boundary survey of the property shown (not prepared for recordation as per G.S. 47-30). This plat was prepared under my supervision.

Joseph R. Bruno, Jr., R.L.S.
 N.C. Surveyor No. L-3315



NCGS LANCE
 GRID COORDS. NAD 27
 N= 504,237.50
 E= 1,437,600.99

PARCEL ID # 207-112-54-207-112-43

		JOB NO. 512-89-033	
ENGINEERING DEPARTMENT		FILE NO.	
Phase II Segment IV Park Road and Johnston Road Widening		SHEET 3 OF 3	
Property of Sharon South Homes Assoc.		DATE 6/10/91	
DRAWN BY KGS CHECKED BY JRB SURVEY SUPERVISOR		SCALE 1"=40'	
REVISIONS REV. 114-92 ADD GRID TIE		F-A-04	

207-112-43

F-A-04