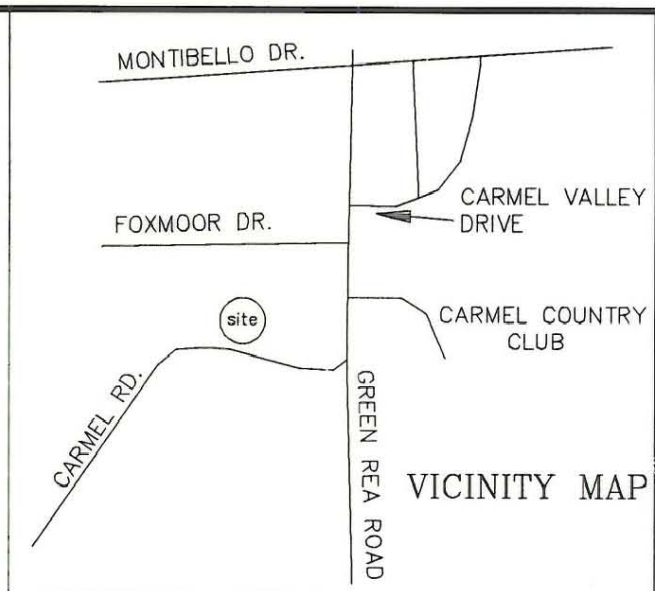


I, R. DENNIS SMITH CERTIFY THAT THIS PLAT WAS PREPARED FROM AN ACTUAL FIELD SURVEY DONE UNDER MY SUPERVISION HAVING A RATIO OF PRECISION OF 1:10,000. AND THAT THIS PLAT WAS PREPARED UNDER MY SUPERVISION.

R. Dennis Smith 1/25/93
N.C.R.L.S. L-1482 DATE



NC GRID NAD 83

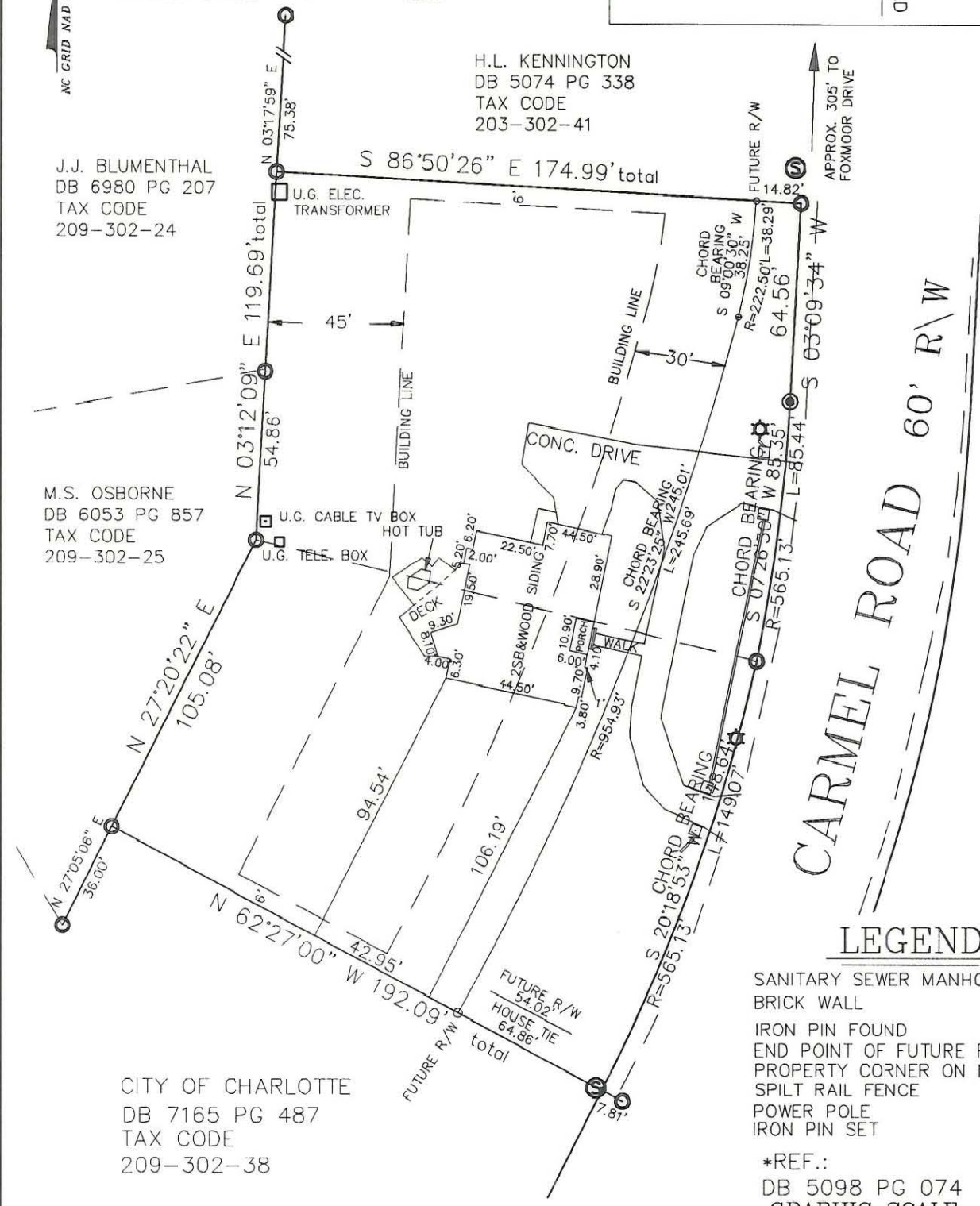
J.J. BLUMENTHAL
DB 6980 PG 207
TAX CODE
209-302-24

H.L. KENNINGTON
DB 5074 PG 338
TAX CODE
203-302-41

M.S. OSBORNE
DB 6053 PG 857
TAX CODE
209-302-25

CITY OF CHARLOTTE
DB 7165 PG 487
TAX CODE
209-302-38

TOTAL AREA 46,301 S.F.
AREA OF FUTURE R/W 10,950 S.F.
AREA REMAINING 35,351 S.F.

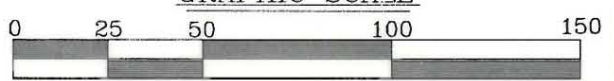


CARMEL ROAD 60' R/W

LEGEND

- SANITARY SEWER MANHOLE (S)
- BRICK WALL (□)
- IRON PIN FOUND (C)
- END POINT OF FUTURE R/W LINE (o)
- PROPERTY CORNER ON MANHOLE (•)
- SPLIT RAIL FENCE (—x—)
- POWER POLE (⊕)
- IRON PIN SET (⊙)

*REF.:
DB 5098 PG 074
GRAPHIC SCALE



PREPARED BY:
CITY OF CHARLOTTE
ENGINEERING DEPARTMENT
600 EAST FOURTH STREET
CHARLOTTE, NC 28202
704-336-2291

CHARLOTTE ENGINEERING DEPARTMENT		
REVISIONS	BOUNDARY & PHYSICAL SURVEY FOR CITY OF CHARLOTTE	JOB NO. 88123
	PROPERTY OF	FILE NO. PLATS3-5
DRAWN BY dhs	DAVID A. BOURGEOIS & wf. SUSAN R. CHARLOTTE, MECK. CO., NC	SHEET 1
CHECKED BY <i>[Signature]</i>		OF 1
SURVEY SUPVR. <i>[Signature]</i>	DATE 1-8-93	SCALE 1"=50'

209-302-56/57