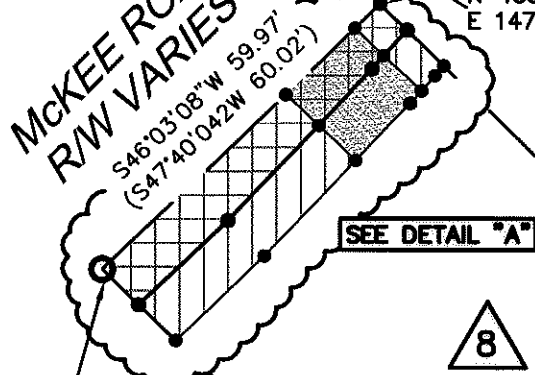


S41°51'09"W  
1621.65' GROUND  
1621.40' GRID

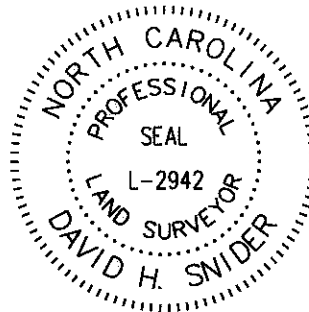
KNOX NAD83(86)  
N 484552.89  
E 1474266.96  
GRID FACTOR=0.9998448

N 483345.17  
E 1473185.12

**McKEE ROAD  
R/W VARIES**



K & P DEVELOPMENT, LLC  
TAX CODE: 231-041-28  
DB 21236 PG 815  
4507 McKEE ROAD

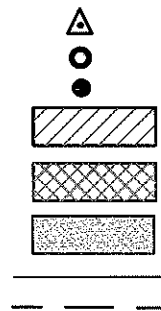


I, DAVID H. SNIDER, CERTIFY THAT THIS PLAT WAS PREPARED UNDER MY SUPERVISION AND THAT THE PLAT WAS PREPARED FOR THE PURPOSE OF EASEMENTS ONLY, AND IS NOT INTENDED TO BE A BOUNDARY SURVEY OF PROPERTY SHOWN.

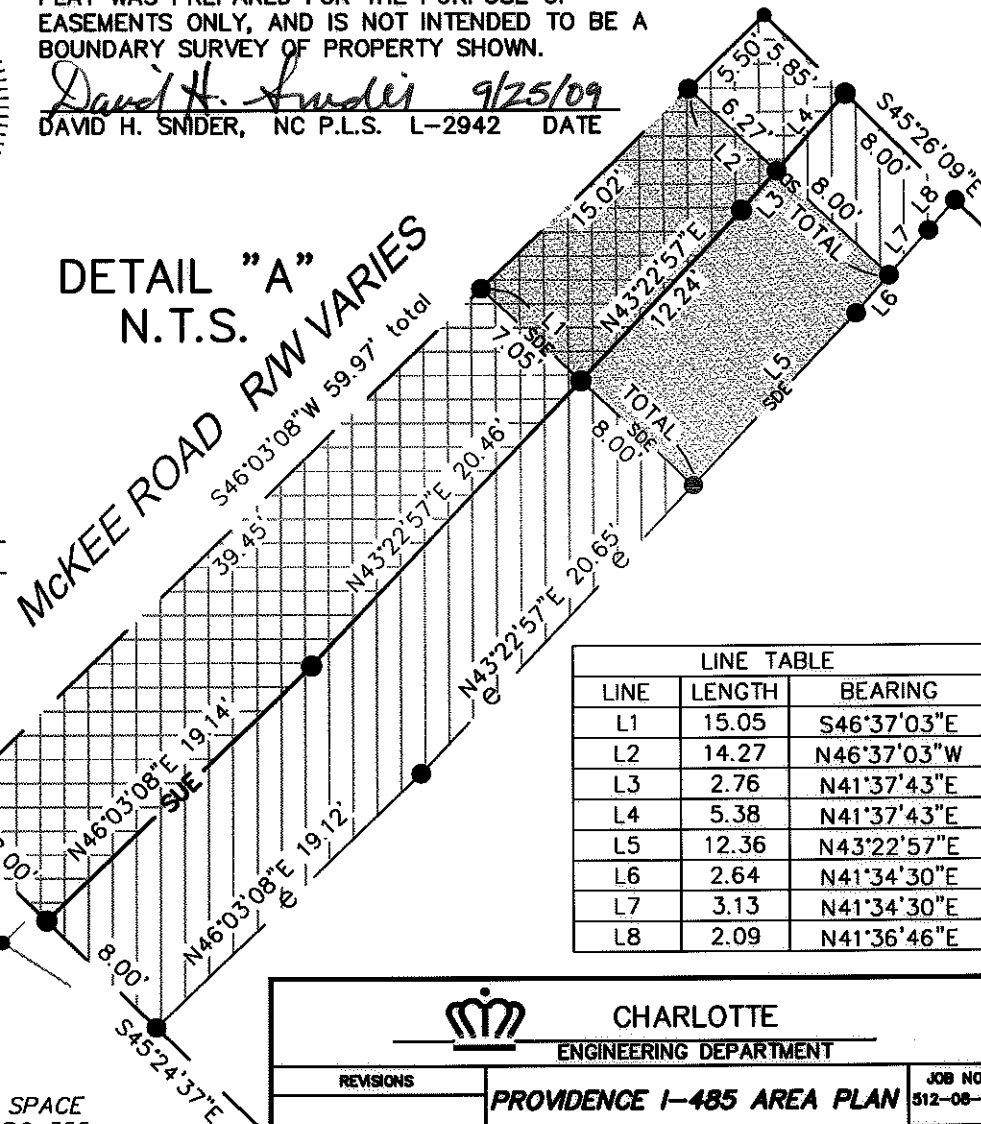
*David H. Snider* 9/25/09  
DAVID H. SNIDER, NC P.L.S. L-2942 DATE

**LEGEND**

- NCGS CONTROL MONUMENT
- IRON PIN FOUND
- CALCULATED POINT
- TEMP. CONSTRUCTION EASEMENT
- SIDEWALK / UTILITY EASEMENT
- STORM DRAINAGE EASEMENT
- LINES SURVEYED
- LINES NOT SURVEYED



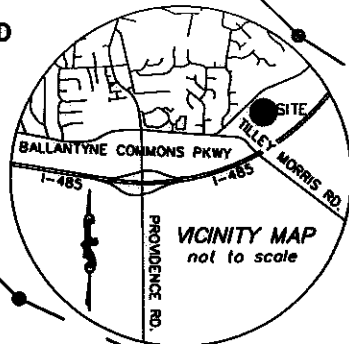
**DETAIL "A"  
N.T.S.**



LINE TABLE		
LINE	LENGTH	BEARING
L1	15.05	S46°37'03"E
L2	14.27	N46°37'03"W
L3	2.76	N41°37'43"E
L4	5.38	N41°37'43"E
L5	12.36	N43°22'57"E
L6	2.64	N41°34'30"E
L7	3.13	N41°34'30"E
L8	2.09	N41°36'46"E

3+26.90  
17.68' RT.

K & P DEVELOPMENT, LLC  
TAX CODE: 231-041-24  
DB 22725 PG 920  
12019 McKEE ROAD



K & P DEVELOPMENT, LLC  
TAX CODE: 231-041-25  
DB 22725 PG 920  
4517 McKEE ROAD

**NOTE:**

- 1) BEARINGS AND DISTANCES SHOWN IN PARENTHESES ARE BASED ON RECORDED MAP INFORMATION.
- 2) TOTAL AREA 12,015 SQ.FT.
- 3) TEMP. CONSTRUCTION EASEMENT 360 SQ.FT.
- 4) STORM DRAINAGE EASEMENT 220 SQ.FT.
- 5) SIDEWALK/ UTILITY EASEMENT 440 SQ.FT.
- 6) AREA REMAINING 12,015 SQ.FT.

State of North Carolina  
County of Mecklenburg

I, \_\_\_\_\_, Review Officer of Mecklenburg County, certify that the map or plat to which this certification is affixed meets all statutory requirements for recording.

Review Officer \_\_\_\_\_ Date \_\_\_\_\_

COMMON OPEN SPACE  
MAP BOOK 48 PG 355

STORM DRAINAGE EASEMENT  
OVERLAPS SIDEWALK/UTILITY  
100 SQ.FT.

CHARLOTTE ENGINEERING DEPARTMENT		
REVISIONS	PROVIDENCE I-485 AREA PLAN IMPROVEMENTS	JOB NO. 512-08-007
		FILE NO. LAN #208007
OWNER: K & P DEVELOPMENT, LLC TAX CODE: 231-041-24 CHARLOTTE, MECKLENBURG CO., NC		SHEET 1 OF 1
DRAWN BY G.F.	CHECKED BY SURVEY SUPR. <i>DS</i>	
K:\AUTOCAD\en_su-1d4\Lon.208007\PLAT MAPS and INFORMATION\Plat-08		

PREPARED BY:  
CITY OF CHARLOTTE  
ENGINEERING DEPARTMENT  
600 EAST FOURTH STREET  
CHARLOTTE, NC 28202  
704-336-2291

ACQUISITION BY DB 25428 PG 54