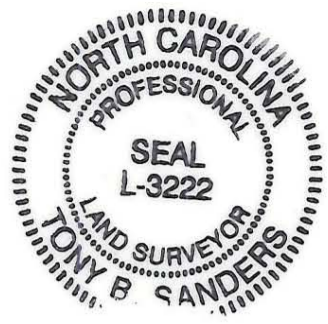


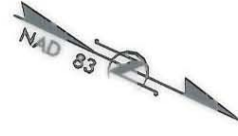
VICINITY MAP (NOT TO SCALE)

I, TONY B. SANDERS, CERTIFY THAT THIS PLAT WAS PREPARED UNDER MY SUPERVISION AND THAT THE PLAT WAS PREPARED FOR THE PURPOSE OF THE ACQUISITION AND EASEMENTS ONLY, AND IS NOT INTENDED TO BE A BOUNDARY SURVEY OF PROPERTY SHOWN.

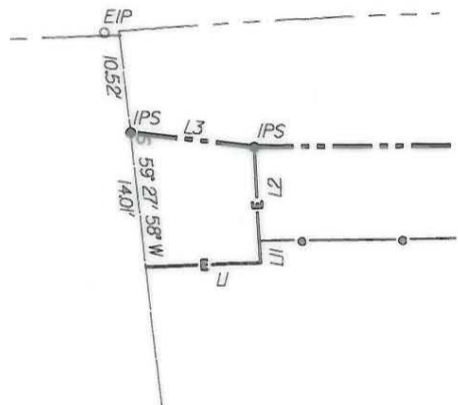
Tony B. Sanders 5.31.02
 TONY B. SANDERS, NC P.L.S. L-3222, DATE



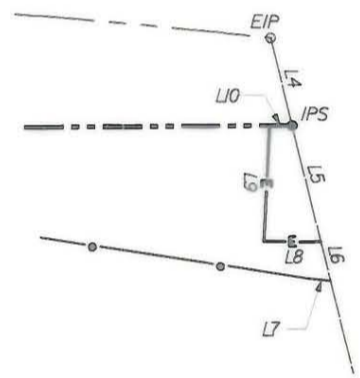
REVISIONS:
 NEW IRON PINS SET 5/30/02
 TOTAL AREA 5/30/02
 REMAINING AREA 5/30/02
 PERM. DRAINAGE EASEMENT 5/30/02



INSET A
 PDE DETAIL



INSET B
 PDE DETAIL



LINE TABLE		
LINE	LENGTH	BEARING
L1	12.26'	S 26° 04' 59" E
L2	9.70'	N 63° 00' 46" E
L3	13.31'	N 17° 39' 41" W
L4	9.35'	N 51° 51' 36" E
L5	12.36'	N 51° 51' 36" E
L6	4.18'	N 51° 51' 36" E
L7	2.33'	N 19° 19' 53" W
L8	5.98'	S 24° 21' 35" E
L9	12.02'	S 68° 42' 36" W
L10	2.40'	N 24° 21' 35" W
L11	2.32'	N 63° 00' 46" E

ACQUISITION BY CITY
 RECORDED IN DEED BOOK
15714-277
 DATE 7-16-03

GRAPHIC SCALE




(IN FEET)
 1 : 20

LEGEND	
● IPS	IRON PIN SET
○ EIP	EXISTING IRON PIN
◇ R/M	R/W MONUMENT
—	PROPERTY LINE
- - -	EXISTING R/W
— · — · —	NEW R/W
— — — — —	EXISTING DUKE POWER EASEMENT
- · - · - · - · -	PERMANENT UTILITY EASEMENT (PUE)
- · - · - · - · -	PERMANENT DRAINAGE EASEMENT (PDB)
○	TEMPORARY CONSTRUCTION EASEMENT (TCE)
▨	BUILDING TO BE REMOVED

PREPARED BY:
CTE ENGINEERS
 CONSOER TOWNSEND ENVIRONMENTAL ENGINEERS, INC.
 13325 SOUTH POINT BOULEVARD, SUITE 400
 CHARLOTTE, NC 28273
 704-583-0902

CHECKED BY:
 SURVEY AND MAPPING CONTROL, INC.
 10100 PARK CEDAR DRIVE, SUITE 162
 CHARLOTTE, NC 28210
 704-542-9095

		CHARLOTTE	
ENGINEERING AND PROPERTY MANAGEMENT			
512-99-014 JOB NO.	FILE NO.	BROOKSHIRE BOULEVARD (NC16) PROPERTY ACQUISITION	
AS BUILT	DATE		
SCALE 1" = 20'		PARCEL 10 NASH PROPERTIES, LLC	
TBS SURVEYED BY	MKA PREPARED BY	HKA CHECKED BY	TBS APPROVED BY
		12/12/01 DATE	
		SHEET 2	
		OF 2	

629-212-14