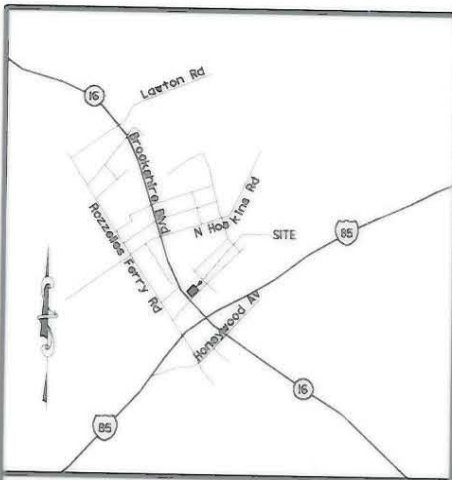


I, TONY B. SANDERS, CERTIFY THAT THIS PLAT WAS PREPARED UNDER MY SUPERVISION AND THAT THE PLAT WAS PREPARED FOR THE PURPOSE OF THE ACQUISITION AND EASEMENTS ONLY, AND IS NOT INTENDED TO BE A BOUNDARY SURVEY OF PROPERTY SHOWN.

*Tony B. Sanders* 5.31.02  
 TONY B. SANDERS, NC P.L.S. L-3222, DATE

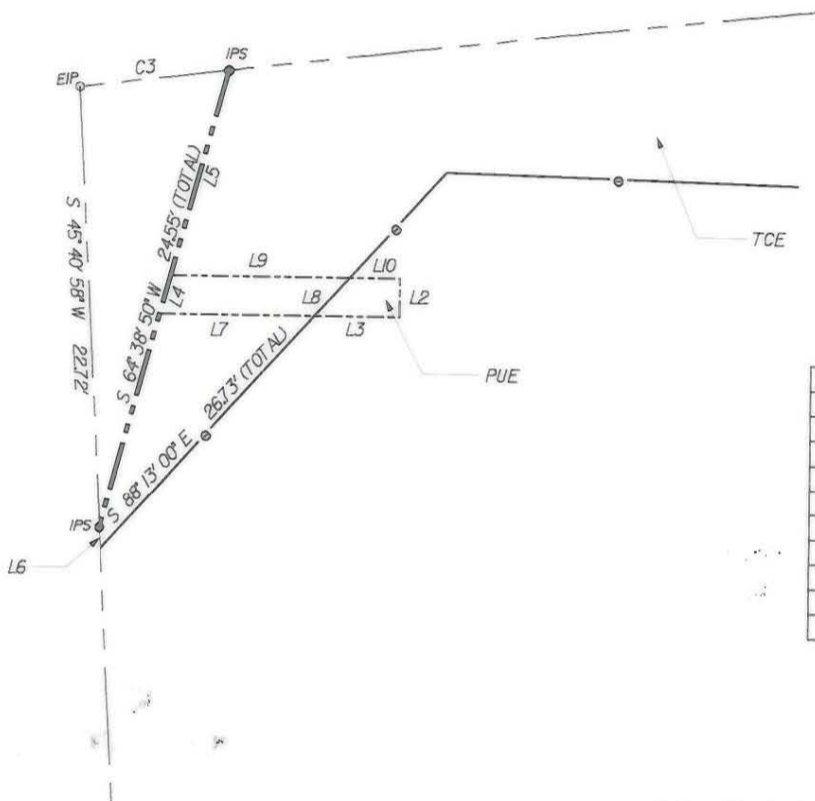


REVISIONS:  
 NEW IRON PINS SET 5/30/02  
 TOTAL AREA 5/30/02  
 REMAINING AREA 5/30/02



VICINITY MAP (NOT TO SCALE)

INSET A  
 PUE DETAIL



PUE & TCE LINE TABLE		
LINE	LENGTH	BEARING
L2	2.00'	N 45° 01' 09" E
L3	4.52'	S 40° 58' 51" E
L4	2.08'	N 64° 38' 50" E
L5	10.99'	N 64° 38' 50" E
L6	1.08'	S 45° 40' 58" W
L7	8.19'	S 40° 58' 51" E
L8	2.72'	S 88° 13' 00" E
L9	9.48'	N 40° 58' 51" W
L10	2.67'	N 40° 58' 51" W

**ACQUISITION BY CITY**  
**RECORDED IN DEED BOOK**  
**15208-643 (J)**  
**DATE 4-24-03**

GRAPHIC SCALE



LEGEND	
● IPS	IRON PIN SET
○ EIP	EXISTING IRON PIN
◇ R/M	R/W MONUMENT
—	PROPERTY LINE
- - -	EXISTING R/W
— — —	NEW R/W
— — — — —	EXISTING DUKE POWER EASEMENT
— — — — —	PERMANENT UTILITY EASEMENT (PUE)
— — — — —	PERMANENT DRAINAGE EASEMENT (PDB)
— — — — —	TEMPORARY CONSTRUCTION EASEMENT (TCE)
▨	BUILDING TO BE REMOVED

PREPARED BY:  
**CTE ENGINEERS**  
 CONSOER TOWNSEND ENVIRONMENTAL ENGINEERS, INC.  
 13325 SOUTH POINT BOULEVARD, SUITE 400  
 CHARLOTTE, NC 28273  
 704-583-0902

CHECKED BY:  
 SURVEY AND MAPPING CONTROL, INC.  
 10100 PARK CEDAR DRIVE, SUITE 162  
 CHARLOTTE, NC 28210  
 704-542-9095

512-99-014		FILE NO.		BROOKSHIRE BOULEVARD (NC16)	
JOB NO.		DATE		PROPERTY ACQUISITION	
AS BUILT		DATE		PARCEL 4	
SCALE		1" = 50'		AMIRI SIROOS (ET-AL)	
TBS	MKA	MKA	TBS	11/21/01	SHEET
SURVEYED BY	PREPARED BY	CHECKED BY	APPROVED BY	DATE	2
					OF
					2

029 010-16