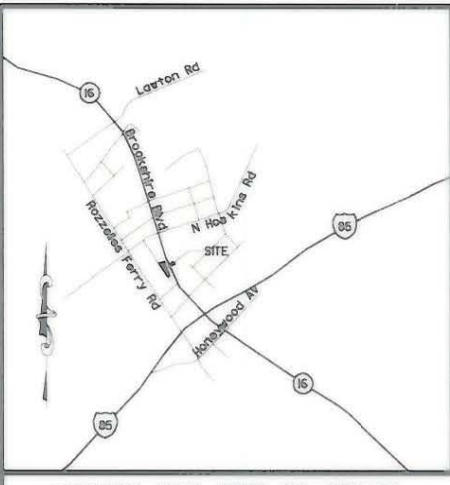


I, TONY B. SANDERS, CERTIFY THAT THIS PLAT WAS PREPARED UNDER MY SUPERVISION AND THAT THE PLAT WAS PREPARED FOR THE PURPOSE OF THE ACQUISITION AND EASEMENTS ONLY, AND IS NOT INTENDED TO BE A BOUNDARY SURVEY OF PROPERTY SHOWN.

Tony B. Sanders 7.22.02
 TONY B. SANDERS, NC P.L.S. L-3222, DATE



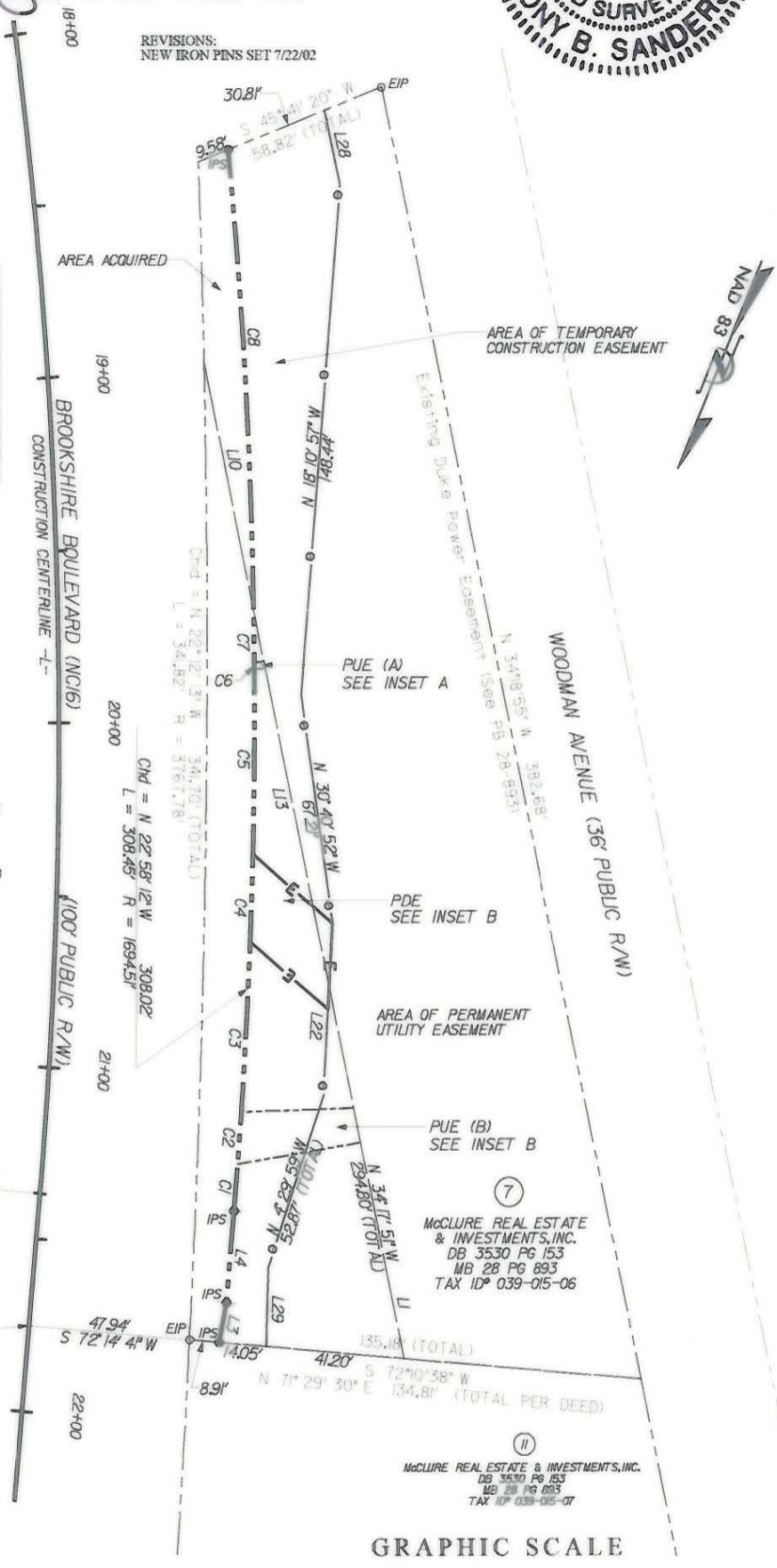
VICINITY MAP (NOT TO SCALE)

CURVE TABLE				
CURVE	CHORD BEARING	CHORD	LENGTH	RADIUS
C1	N 17° 59' 10" W	13.65'	13.65'	1694.51'
C2	N 18° 28' 27" W	15.21'	15.21'	1694.51'
C3	N 19° 34' 12" W	49.61'	49.62'	1694.51'
C4	N 20° 50' 30" W	25.60'	25.60'	1694.51'
C5	N 22° 10' 52" W	53.63'	53.63'	1694.51'
C6	N 23° 07' 18" W	2.00'	2.00'	1694.51'
C7	N 23° 24' 20" W	14.80'	14.80'	1694.51'
C8	N 25° 55' 13" W	133.91'	133.94'	1694.51'

AREAS FOR PARCEL 7		
SQ.FT.	ACRES	PROPERTIES
33149.16	0.7610	TOTAL AREA (PER DEED)
4337.27	0.0996	ACQUIRED AREA
28811.89	0.6614	REMAINING AREA
448.27	0.0103	PERM. UTILITY EASEMENT
615.29	0.0141	PERM. DRAINAGE EASEMENT
6468.44	0.1485	TEMP. CONST. EASEMENT

LINE TABLE		
LINE	LENGTH	BEARING
L1	63.93'	N 34° 17' 51" W
L3	11.61'	N 12° 02' 41" W
L4	26.64'	N 17° 45' 19" W
L10	73.31'	N 34° 17' 51" W
L13	70.15'	N 34° 17' 51" W
L22	24.71'	N 19° 31' 36" W
L28	21.67'	N 35° 08' 02" W
L29	22.82'	N 21° 01' 07" W

PI STA=18+227.2
 $\Delta = 23° 14' 42"$
 $R = 1570.73'$
 $D = 03° 38' 52" (RT)$
 $T = 323.07'$
 $L = 637.25'$



**ACQUISITION BY CITY
 RECORDED IN DEED BOOK
 15310-296
 DATE 5-8-03**



LEGEND	
● IPS	IRON PIN SET
○ EIP	EXISTING IRON PIN
⊙ R/M	R/W MONUMENT
—	PROPERTY LINE
- - -	EXISTING R/W
— — —	NEW R/W
- · - · -	EXISTING DUKE POWER EASEMENT
- — — —	PERMANENT UTILITY EASEMENT (PUE)
- — — —	PERMANENT DRAINAGE EASEMENT (PDE)
- · - · -	TEMPORARY CONSTRUCTION EASEMENT (TCE)
▨	BUILDING TO BE REMOVED

PREPARED BY:
CTE ENGINEERS
 CONSER TOWNSEND ENVIRONMENTAL ENGINEERS, INC.
 13325 SOUTH POINT BOULEVARD, SUITE 400
 CHARLOTTE, NC 28273
 704-563-0902

CHECKED BY:
 SURVEY AND MAPPING CONTROL, INC.
 10100 PARK CEDAR DRIVE, SUITE 162
 CHARLOTTE, NC 28210
 704-542-9095

CHARLOTTE
 ENGINEERING AND PROPERTY MANAGEMENT

512-99-014	FILE NO.	BROOKSHIRE BOULEVARD (NC16)	
JOB NO.	DATE	PROPERTY ACQUISITION	
AS BUILT	DATE	PARCEL 7	
SCALE	DATE	McCLURE REAL ESTATE & INVESTMENTS, INC.	
1" = 50'	DATE		
TBS	MKA	HKA	TBS
SURVEYED BY	PREPARED BY	CHECKED BY	APPROVED BY
			12/12/01
			DATE
			SHEET
			1
			OF
			2

079-015-06