

VICINITY MAP (NOT TO SCALE)

I, TONY B. SANDERS, CERTIFY THAT THIS PLAT WAS PREPARED UNDER MY SUPERVISION AND THAT THE PLAT WAS PREPARED FOR THE PURPOSE OF THE ACQUISITION AND EASEMENTS ONLY, AND IS NOT INTENDED TO BE A BOUNDARY SURVEY OF PROPERTY SHOWN.

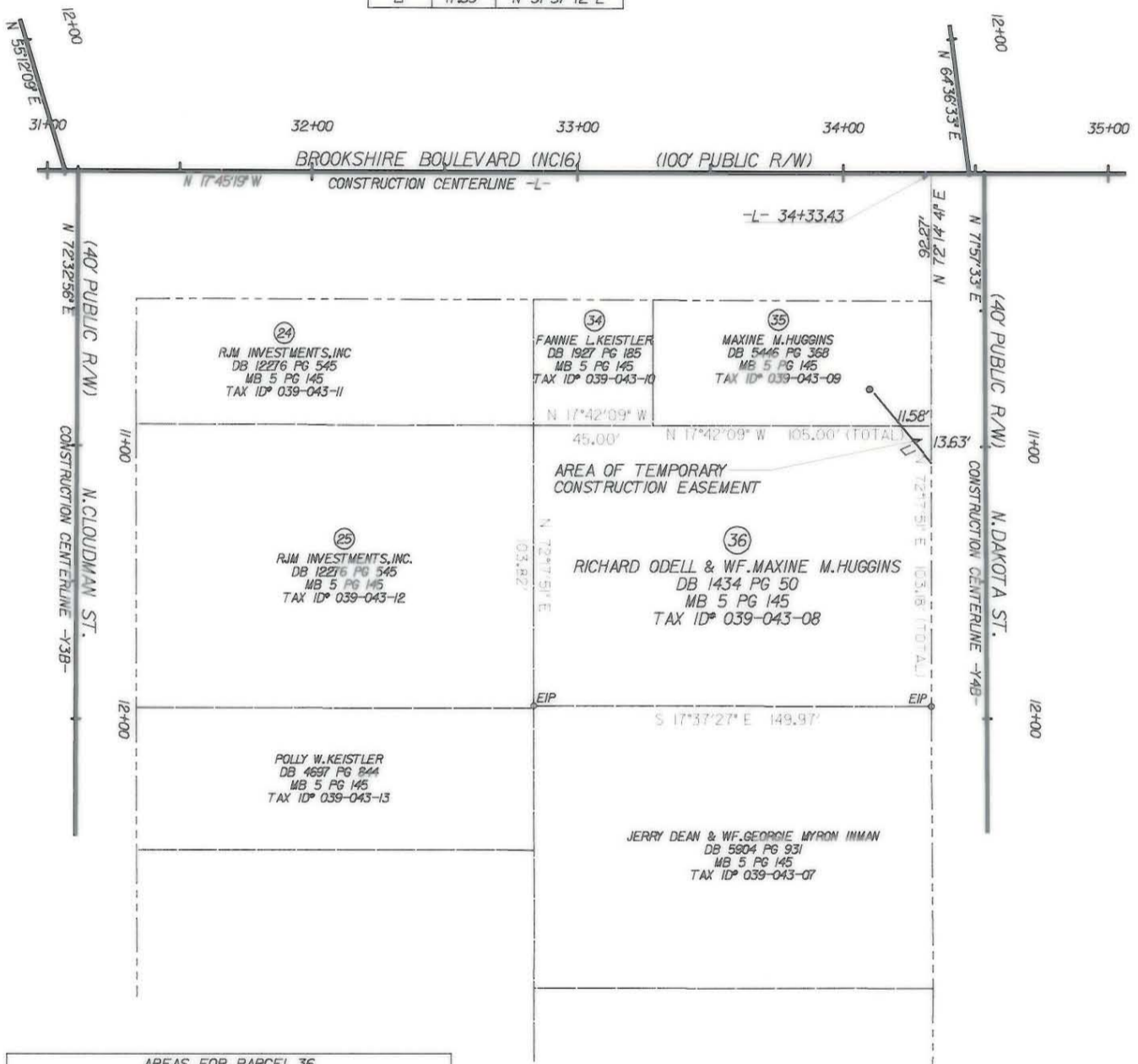
Tony B. Sanders 12.14.01
 TONY B. SANDERS, NC P.L.S. L-3222, DATE



ACQUISITION BY CITY
 RECORDED IN DEED BOOK

13602-270
 DATE 3-17-02

LINE TABLE		
LINE	LENGTH	BEARING
L1	17.89'	N 31° 57' 12" E



AREAS FOR PARCEL 36		
SQ.FT.	ACRES	PROPERTIES
15289.56	0.3510	TOTAL AREA (PER DEED)
78.92	0.0018	TEMP. CONST. EASEMENT

GRAPHIC SCALE



(IN FEET)
 1" = 60'

LEGEND	
○ EIP	EXISTING IRON PIN
◇ R/W	R/W MONUMENT
—	PROPERTY LINE
- - -	EXISTING R/W
— · — ·	NEW R/W
— · — · — ·	EXISTING DUKE POWER EASEMENT
— · — · — ·	PERMANENT UTILITY EASEMENT (PUE)
— · — · — ·	PERMANENT DRAINAGE EASEMENT (PDE)
— · — · — ·	TEMPORARY CONSTRUCTION EASEMENT (TCE)
▨	BUILDING TO BE REMOVED

CHARLOTTE
 ENGINEERING AND PROPERTY MANAGEMENT

512-99-014 JOB NO.	FILE NO.	BROOKSHIRE BOULEVARD (NC16) PROPERTY ACQUISITION
AS BUILT	DATE	
SCALE 1" = 60'		PARCEL 36 RICHARD ODELL & WF. MAXINE M. HUGGINS
TBS SURVEYED BY	MKA PREPARED BY	HKA CHECKED BY
TBS APPROVED BY	12/14/01 DATE	SHEET 1
		OF 1

PREPARED BY:
CTE ENGINEERS
 CONSERVATION AND ENVIRONMENTAL ENGINEERS, INC.
 13325 SOUTH POINT BOULEVARD, SUITE 400
 CHARLOTTE, NC 28273
 704-583-0902

CHECKED BY:
 SURVEY AND MAPPING CONTROL, INC.
 10100 PARK CEDAR DRIVE, SUITE 162
 CHARLOTTE, NC 28210
 704-542-9955

039-043-08