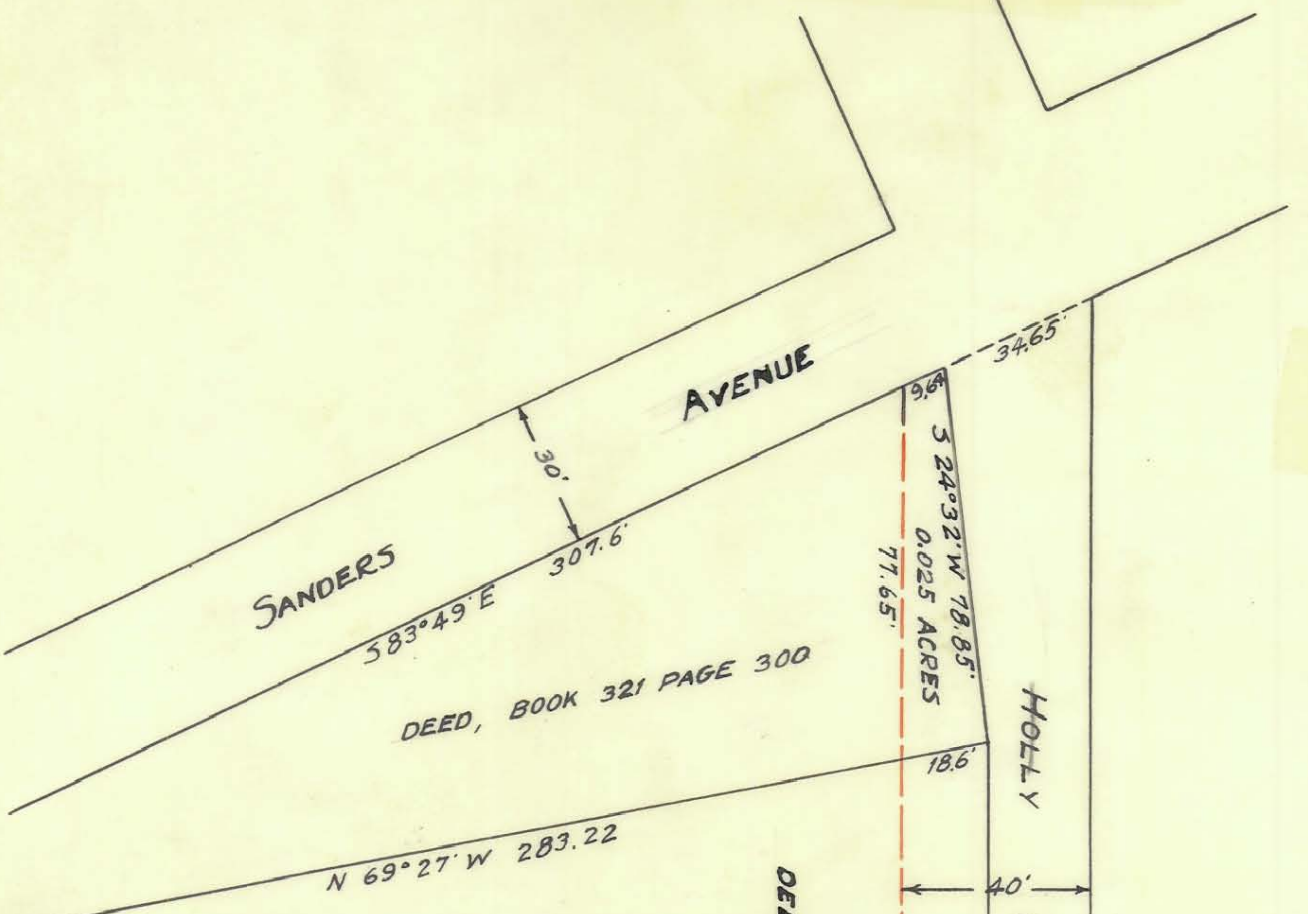


#22



SANDERS AVENUE

HOLLY STREET

Rod Bud

STREET

DEED, BOOK 321 PAGE 300

DEED, BOOK 63 PAGE 420

N 69°27'W 283.22

S 24°32'W 78.85'
0.025 ACRES
71.65'

18.6'

S 31°30'W

0.110 ACRES

S 31°30'W 274.77'

S 31°30'W 274.77'

274.77'

40'

18.6'

33.63

33.0'

N 69°37'W

N 69°37'W

S. A. L. R.R.

MAP SHOWING
PROPERTY TO BE ACQUIRED
FROM
OLIVER PEELER EST.
BY THE
CITY OF CHARLOTTE
FOR STREET PURPOSES
OFFICE OF CITY ENGINEER
SCALE 1" = 40' MAY 17th 1934

69-067-26