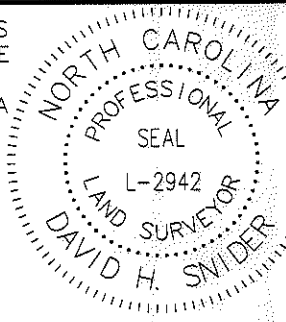


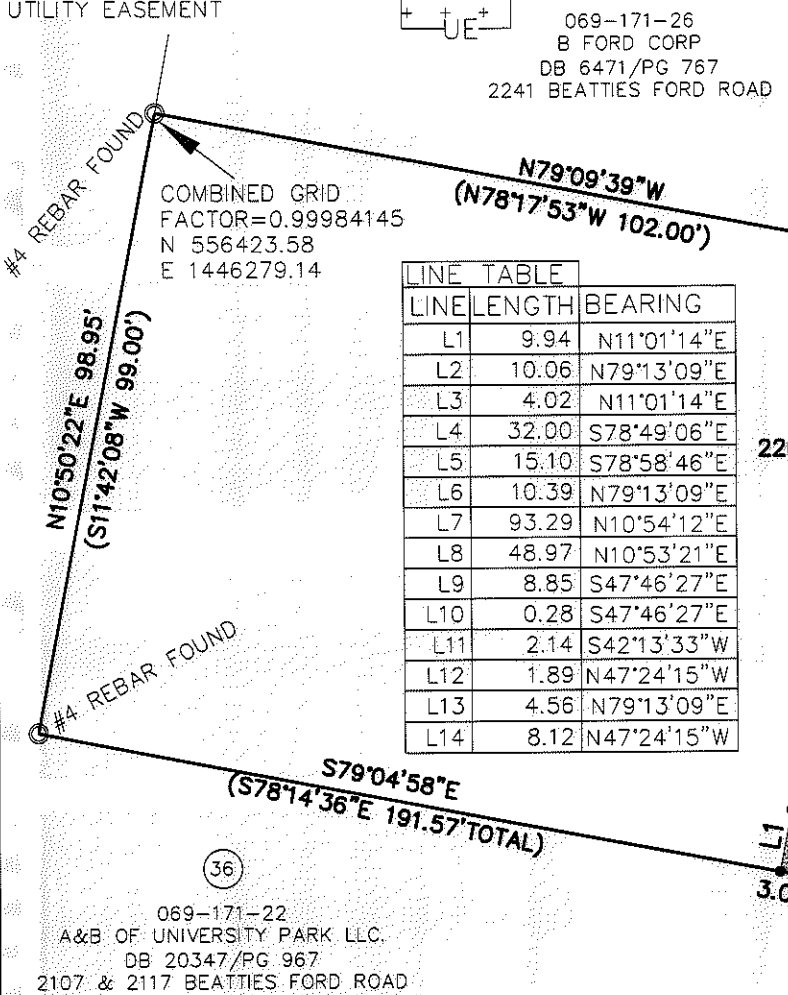
I, DAVID H. SNIDER, CERTIFY THAT THIS PLAT WAS PREPARED UNDER MY SUPERVISION AND THAT THE PLAT WAS PREPARED FOR THE PURPOSE OF EASEMENTS ONLY, AND IS NOT INTENDED TO BE A BOUNDARY SURVEY OF PROPERTY SHOWN.



*David H. Snider* 12/3/2010  
 DAVID H. SNIDER, NC P.L.S. L-2942 DATE

**LEGEND**

- IRON PIN FOUND ○
- CALCULATED POINT ●
- LINES SURVEYED \_\_\_\_\_
- LINES NOT SURVEYED - - - - -
- TEMP. CONSTRUCTION EASEMENT [Hatched Box]
- SIDEWALK UTILITY EASEMENT [Cross-hatched Box]
- UTILITY EASEMENT [Box with + signs]



LINE TABLE		
LINE	LENGTH	BEARING
L1	9.94	N11°01'14"E
L2	10.06	N79°13'09"E
L3	4.02	N11°01'14"E
L4	32.00	S78°49'06"E
L5	15.10	S78°58'46"E
L6	10.39	N79°13'09"E
L7	93.29	N10°54'12"E
L8	48.97	N10°53'21"E
L9	8.85	S47°46'27"E
L10	0.28	S47°46'27"E
L11	2.14	S42°13'33"W
L12	1.89	N47°24'15"W
L13	4.56	N79°13'09"E
L14	8.12	N47°24'15"W

CURVE TABLE				
CURVE	LENGTH	RADIUS	CHORD	BEARING
C1	6.35	10.19	6.25'	S89°05'27"W
C2	8.61	10.19	8.36'	S34°22'49"W
C3	2.25	10.19	2.25'	S64°54'29"W

- 1) BEARINGS AND DISTANCES SHOWN IN PARENTHESES ARE BASED ON RECORDED MAP INFORMATION.
- 2) TOTAL AREA 24,414 SQ. FT.
- 3) TEMP CONSTRUCTION EASEMENT 1,289 SQ. FT.
- 4) SIDEWALK UTILITY EASEMENT 745 SQ. FT.
- 5) UTILITY EASEMENT 20 SQ. FT.
- 6) AREA REMAINING 24,414 SQ. FT.

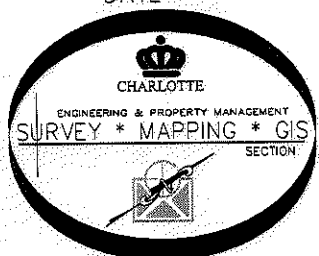
STATE OF NORTH CAROLINA  
 COUNTY OF MECKLENBURG

REVIEW OFFICER OF MECKLENBURG COUNTY, CERTIFY THAT THE MAP OR PLAT TO WHICH THIS CERTIFICATION IS AFFIXED MEETS ALL STATUTORY REQUIREMENTS FOR RECORDING.

REVIEW OFFICER \_\_\_\_\_

DATE \_\_\_\_\_

PREPARED BY:  
 CITY OF CHARLOTTE  
 ENGINEERING DEPARTMENT  
 600 EAST FOURTH STREET  
 CHARLOTTE, NC 28202  
 704-336-2291



<b>CHARLOTTE</b> ENGINEERING DEPARTMENT		JOB NO. 512-07-062
BEATTIES FORD ROAD BUSINESS CORRIDOR PROJECT		207062
PROPERTY OF <b>MODHKHMA LLC.</b> CHARLOTTE, MECKLENBURG CO., NC		SHEET 1
REVISIONS	DRAWN BY P.S.	OF 1
DATE	CHECKED BY DS	SURVEY SUPVR. <i>DS</i>

ACQUISITION BY DB 26847 PG 526-532