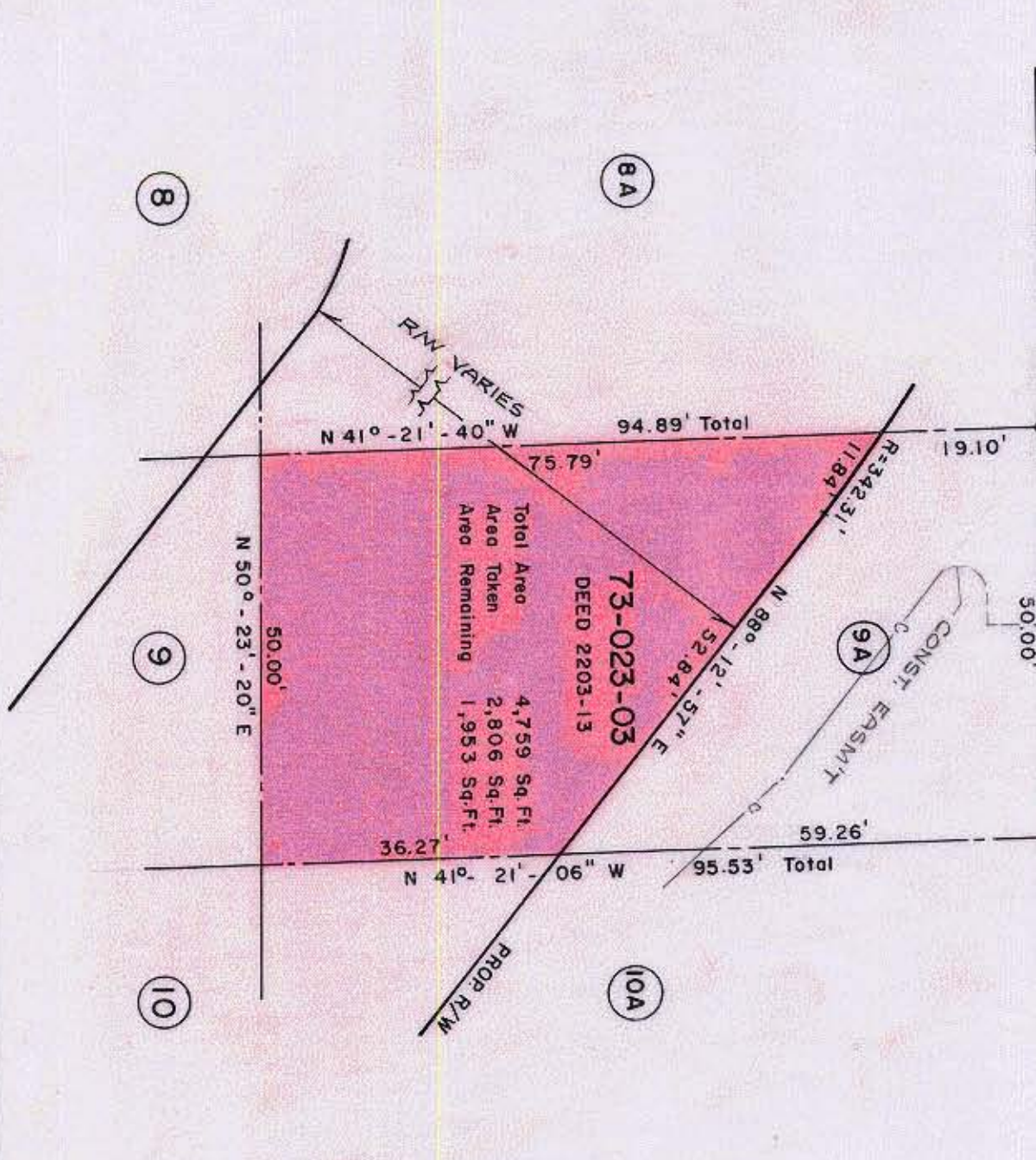


SOUTH MINT STREET

94.22' to SECOND ST. 11' on N 49°-39'-10" E 50.00'



8

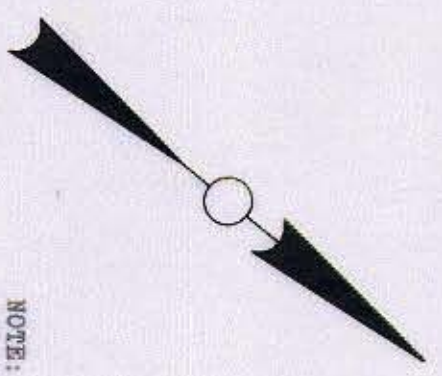
8A

9

9A

10

10A



NOTE: Property corners shown circled were located by actual survey. Bearings are based on POPLAR-MINT CONNECTOR  
WILBUR SMITH ASSOC. 1966

This plat was prepared under my supervision *Stephens R. Gilbert*  
N.C. Reg. Engineer No 6233

CITY OF CHARLOTTE NORTH CAROLINA DEPARTMENT OF PUBLIC WORKS ENGINEERING DIVISION		JOB NO. 132 FILE NO. RM-41	
REVISIONS	POPLAR-MINT CONNECTOR	PARCEL NO. 9A	SHEET 3 OF 7
DRAWN BY RLB CHECKED BY <i>VSJG</i> CITY ENGINEER	DATE AUG 1974	SCALE 1" = 20'	73-02