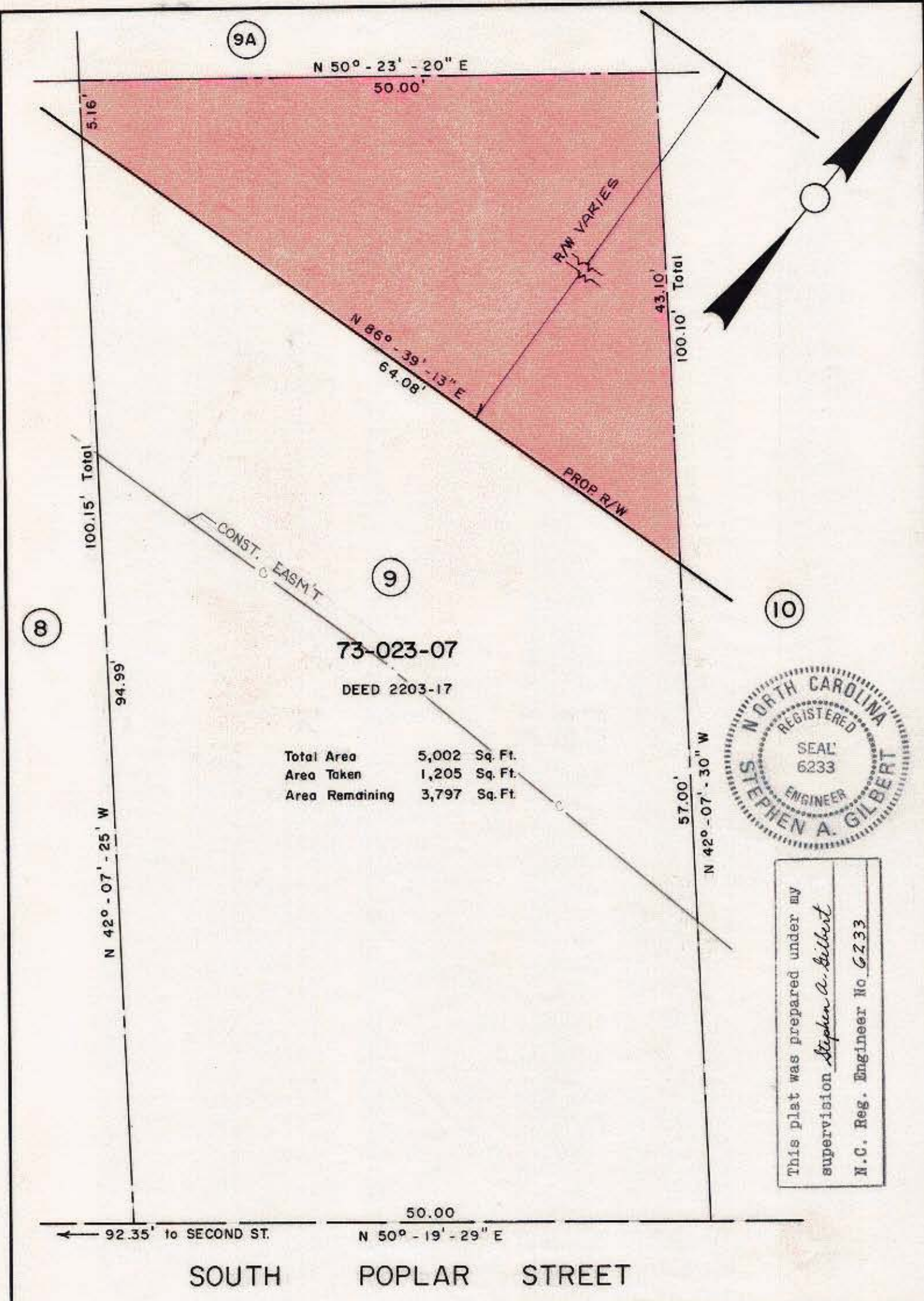


73-02



This plat was prepared under my supervision *Stephen A. Gilbert*
N.C. Reg. Engineer No. 6233

NOTE: Property corners shown circled were located by actual survey. Bearings are based on POPLAR - MINT CONNECTOR WILBUR SMITH ASSOC. 1966

CITY OF CHARLOTTE NORTH CAROLINA DEPARTMENT OF PUBLIC WORKS ENGINEERING DIVISION		
REVISIONS	POPLAR - MINT CONNECTOR	JOB NO. 513-73 132
		FILE NO. RW-91
DRAWN BY RDT	PARCEL NO. 9	SHEET 4
CHECKED BY SAG <i>S.A.G.</i>		OF 7
CITY ENGINEER <i>S.A.G.</i>	DATE AUG. 1974	SCALE 1" = 10'