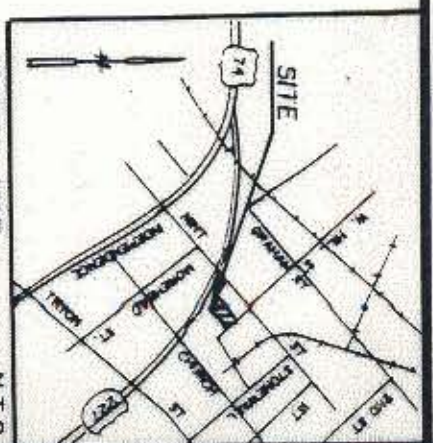
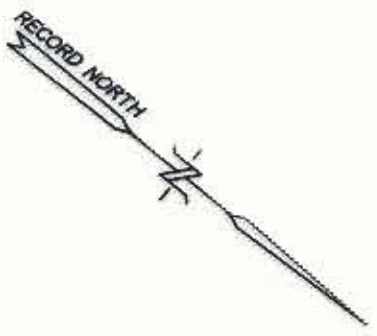
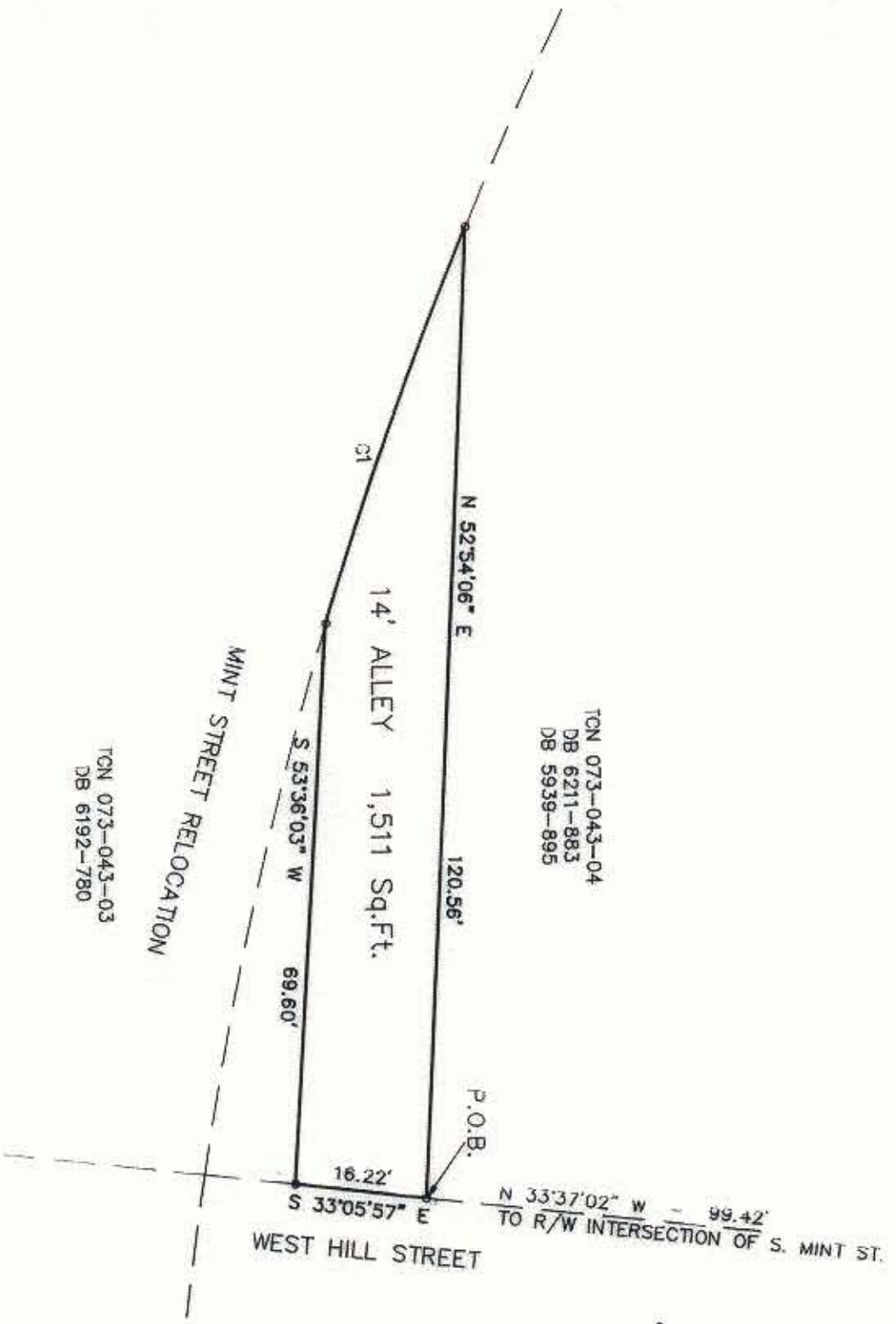


CURVE	RADIUS	LENGTH	TANGENT	CHORD	BEARING	DELTA
C1	490.00'	52.16'	26.10'	52.13'	S 70°00'10" W	06°05'56"

TGN 073-043-04
 DB 6211-883
 DB 5939-895

TGN 073-043-03
 DB 6192-780



Kenneth M. Green
 KENNETH M. GREEN, RLS



POWER ENGINEERING COMPANY, INC. HAS PERFORMED NO BOUNDARY FIELD WORK AT THIS TIME.

BOUNDARY & ACREAGE INFORMATION TAKEN FROM THE COMPILED MAP FOR THE CITY OF CHARLOTTE DATED SEPTEMBER 15, 1993 BY POWER ENGINEERING COMPANY, INC. AND HAS NOT BEEN FIELD VERIFIED BY POWER ENGINEERING COMPANY, INC.

PREPARED BY
POWER ENGINEERING COMPANY, INC.
 ENGINEERS - PLANNERS - SURVEYORS
 P.O. BOX 411481 CHARLOTTE, NORTH CAROLINA 28241
 PH: (704) 588-4204 FAX (704) 588-1838



CHARLOTTE	
ENGINEERING DEPARTMENT	
A MAP OF 14' ALLEY	
OFF W. HILL ST.	
R/W ABANDONMENT	
PREPARED FOR	
CITY OF CHARLOTTE	
REVISIONS	JOB NO.
GRAPH. BY: M.A.L.	513-08-578
CHECKED BY: K.M.G.	FILE NO.
DATE NOV. 19, 1993	SCALE 1" = 20'
SHEET 1	1

Acquired Book 7676 Pages 018-034 13-04