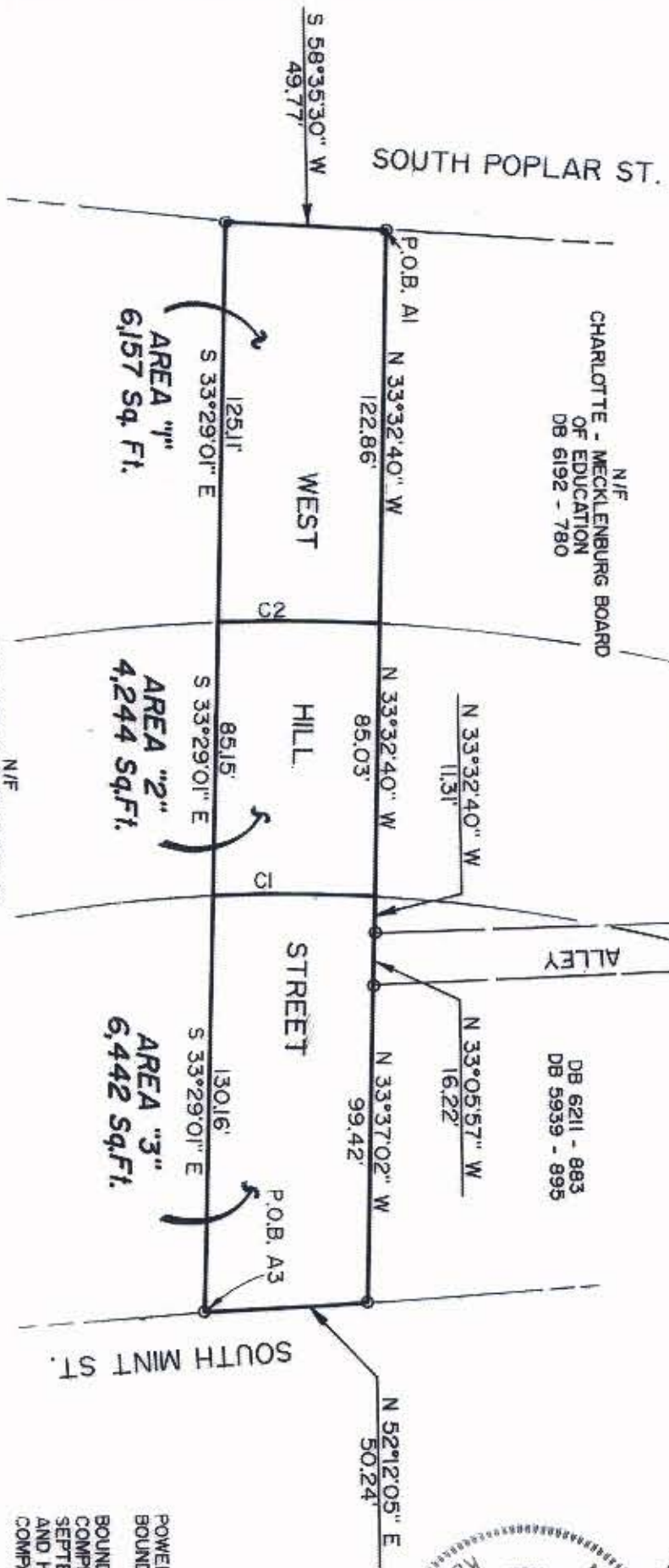


CURVE	RADIUS	LENGTH	TANGENT	CHORD	BEARING	DELTA
C1	490.00'	49.98'	25.00'	49.96'	N 55°52'10" E	04°58'48"
C2	575.00'	49.89'	24.98'	49.87'	N 56°00'04" E	04°58'15"

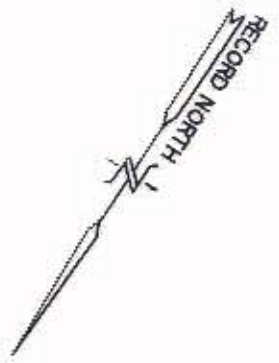


MINT STREET
RELOCATION

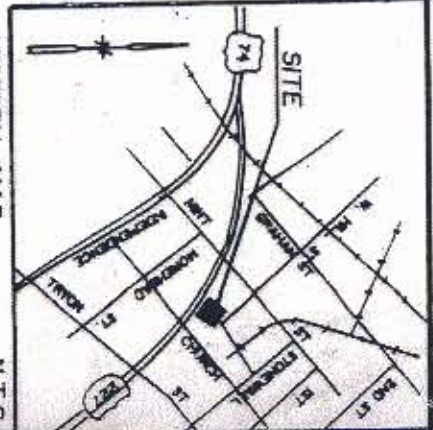
N/F
CHARLOTTE - MECKLENBURG BOARD
OF EDUCATION
DB 6192 - 780

DB 6211 - 883
DB 5939 - 895

N/F
THE KNIGHT PUBLISHING CO.
DB 2906 - 385



Kenneth M. Green
KENNETH M. GREEN, RLS
L-3512



VICINITY MAP
N.T.S.

PREPARED BY
POWER ENGINEERING COMPANY, INC.
ENGINEERS - PLANNERS - SURVEYORS
P.O. BOX 411461 CHARLOTTE, NORTH CAROLINA 28241
PH: (704)588-4204 FAX (704)588-1838



POWER ENGINEERING COMPANY, INC., HAS PERFORMED NO
BOUNDARY FIELD WORK AT THIS TIME.
BOUNDARY & ACREAGE INFORMATION TAKEN FROM THE
COMPLETED MAP FOR THE CITY OF CHARLOTTE DATED
SEPTEMBER 15, 1993 BY POWER ENGINEERING COMPANY INC.
AND HAS NOT BEEN FIELD VERIFIED BY POWER ENGINEERING
COMPANY, INC.

73-04

<p>CHARLOTTE ENGINEERING DEPARTMENT</p>		<p>JOB NO. 512-89-576</p>	
<p>REVISIONS 11-18-93 AREA 283</p>		<p>A MAP OF PROPOSED WEST HILL STREET R/W ABANDONMENT</p>	
<p>DRAWN BY M.A.L. CHECKED BY K.M.G.</p>		<p>PREPARED FOR CITY OF CHARLOTTE</p>	
<p>DATE OCT 18, 1993</p>		<p>SHEET OF</p>	
<p>SCALE 1" = 50'</p>		<p>JOB # CS053-31</p>	

Acquired 7/6/96 018-034