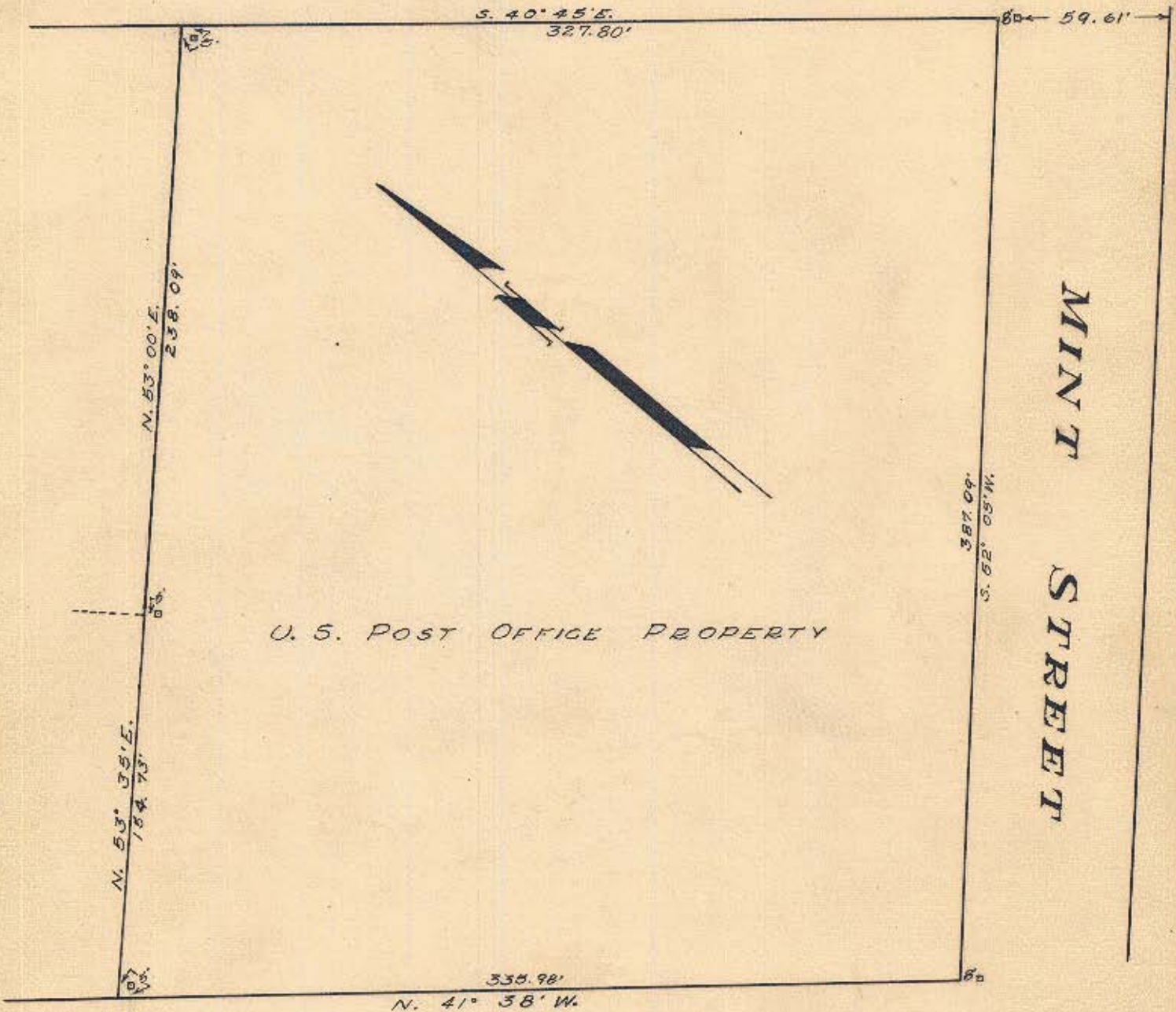


101-A-7-C-101
Topo #2

W. TRADE ST.



W. FOURTH ST.

MAP SHOWING
U. S. POST OFFICE PROPERTY
COPIED FROM MAP IN U. S. POST OFFICE BUILDING
Scale 1" = 60' August 5, 1948
OFFICE OF CITY ENGINEER
CHARLOTTE, N. C.

73-11/3-04