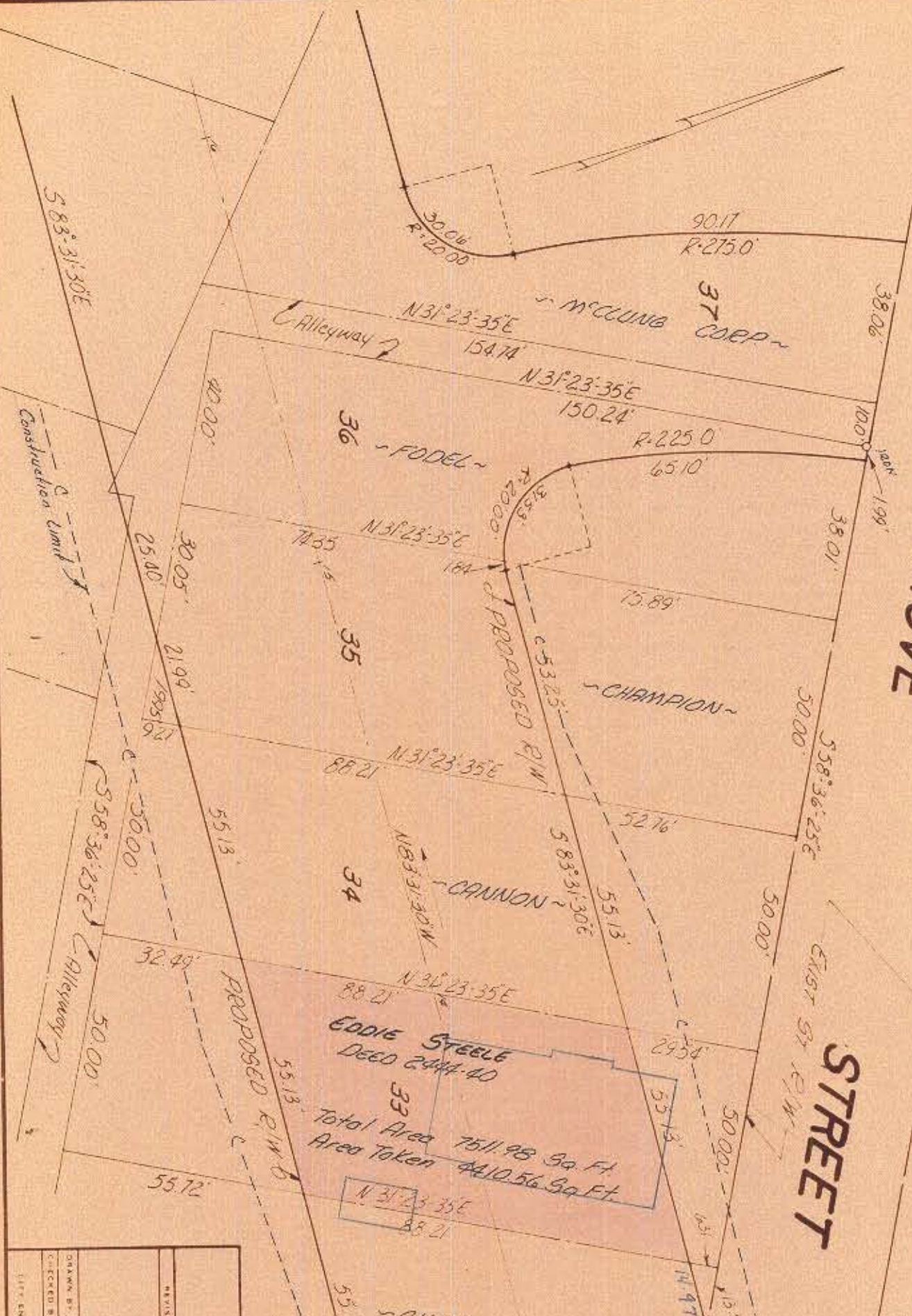


GROVE

STREET

This plat was prepared under my supervision
C. A. Redding
 M. C. Reg. Engineer No. 36659



NOTE: Property corners shown circled were located by actual survey. Bearings are based on
Wesley Heights

Approved by _____
 R/W Agent

CITY OF CHARLOTTE
 NORTH CAROLINA
 ENGINEERING DEPARTMENT
**WEST FOURTH ST.
 EXTENSION**

Property of
EDDIE STEELE

REVISIONS	NO. NO.
	137
FILE NO.	
SHEET	32
OF	70
DATE	Dec. '66
SCALE	1"=30'
DRAWN BY	J.C.B.
CHECKED BY	
CITY ENGINEER	

73-213-30/214-01