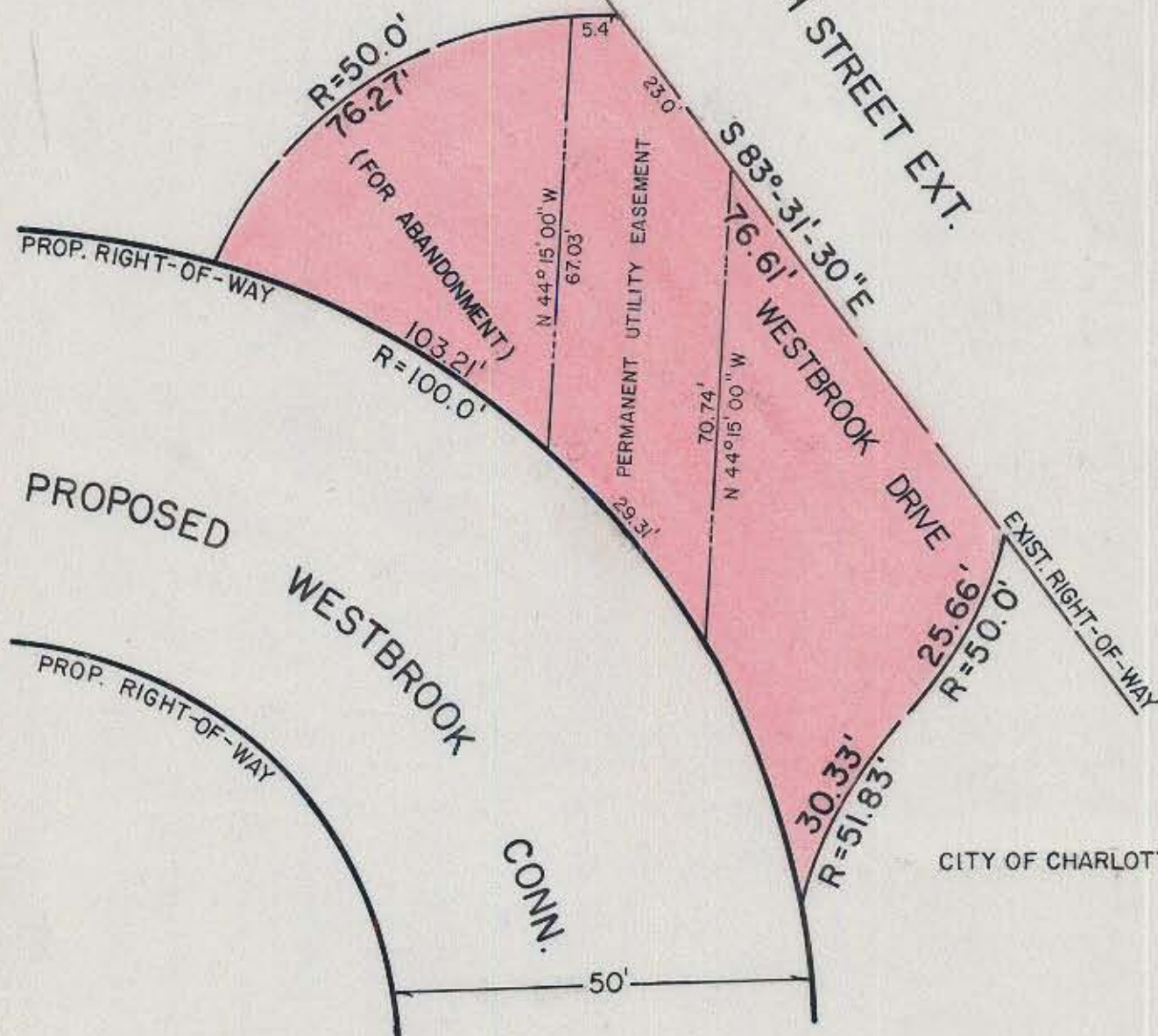


CITY OF CHARLOTTE

WEST FOURTH STREET EXT.



CITY OF CHARLOTTE

Total Area = 4,345 sq. ft. ±
 Easement Area = 1,407 sq. ft.

NOTE: Property corners shown circled were located by actual survey. Bearings are based on WEST FOURTH STREET EXTENSION



This plat was prepared under my supervision Stephen A. Gilbert
 N. C. Reg. Surveyor No. L-1785

CITY OF CHARLOTTE NORTH CAROLINA DEPARTMENT OF PUBLIC WORKS ENGINEERING DIVISION		
REVISIONS 4-21-78 UTILITY EASEMENT ADOPTED 4-28-78 UTILITY EASEMENT REVISED 8-17-78 M&C Engineering Corp. To City of Charlotte DRAWN BY MAS CHECKED BY SAG FOR <u>KG</u> CITY ENGINEER	R/W TO BE ABANDONED A PORTION OF WESTBROOK DRIVE THIRD WARD COMMUNITY DEVELOPMENT	JOB NO. <u>512-75-048</u> FILE NO. SHEET <u>1</u> OF <u>3</u>
DATE JAN. 27, 1977 SCALE None		

73-222-01