

50' R/W

IRWIN AVENUE

IRWIN AVENUE

10

CITY OF CHARLOTTE
3846-082
932.0 S.F. 0.021 AC.



This plat was prepared under my supervision
Stephen A. Gilbert
W.C. Reg. Engineer No. 6233

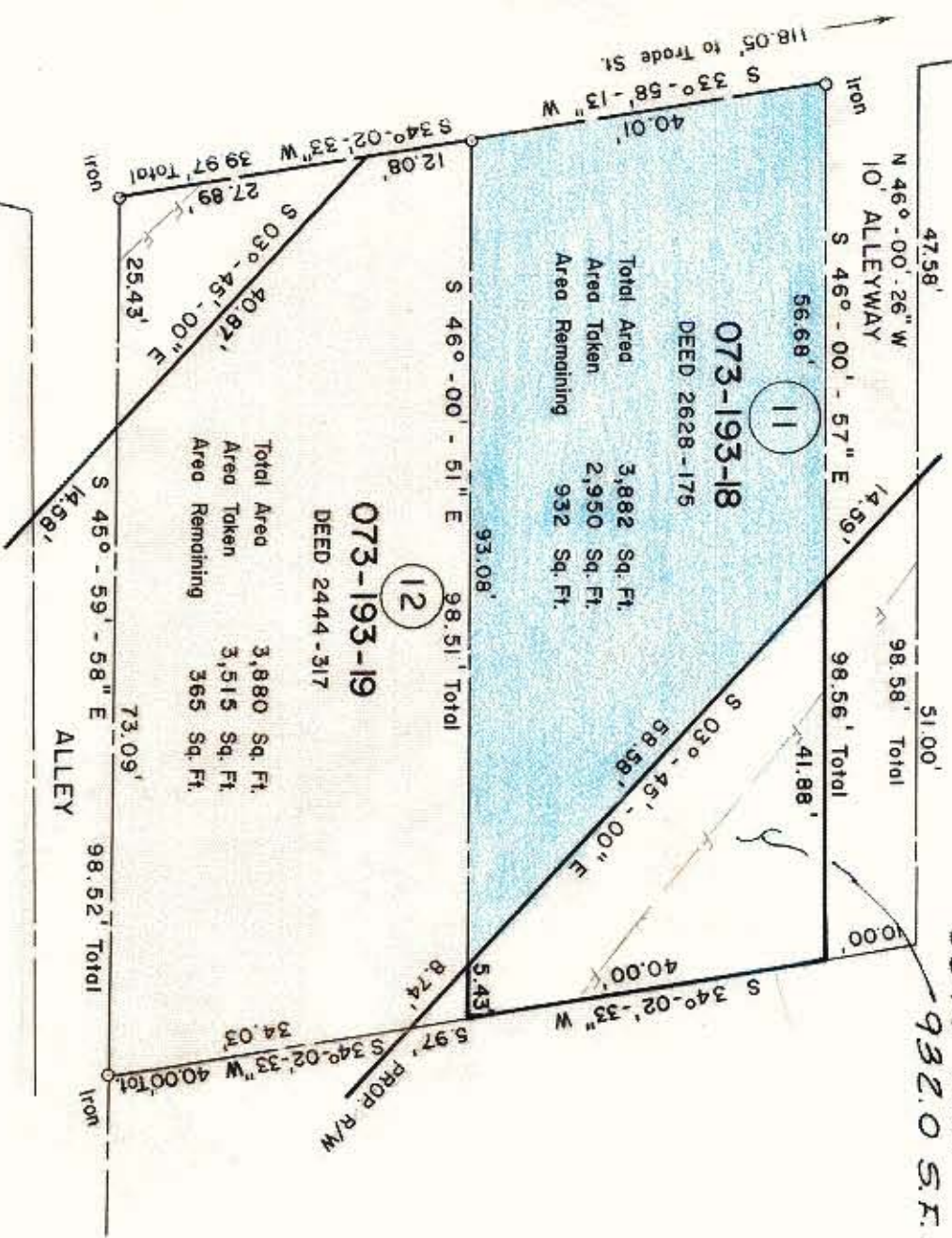
NOTE: Property corners shown circled were located by actual survey. Bearings are based on N.C. COORDINATE SYSTEM

CITY OF CHARLOTTE
NORTH CAROLINA
DEPARTMENT OF PUBLIC WORKS
ENGINEERING DIVISION

PROPOSED R/W
TRADE-FOURTH CONNECTOR
PROJECT NO. 513-73-083

PARCEL NO. 11

REVISIONS	JOB NO.
DRAWN BY CSC	FILE NO.
CHECKED BY RJU	NO.
CITY ENGINEER	DATE April 22, 1975
	SCALE 1" = 20'
	SHEET 11
	OF 29



13

FILE 73-73-21-01