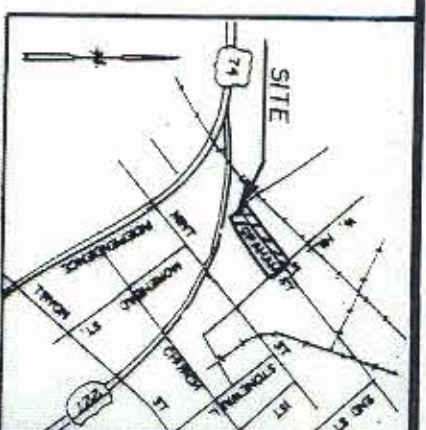
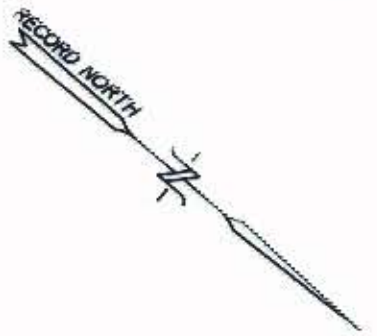
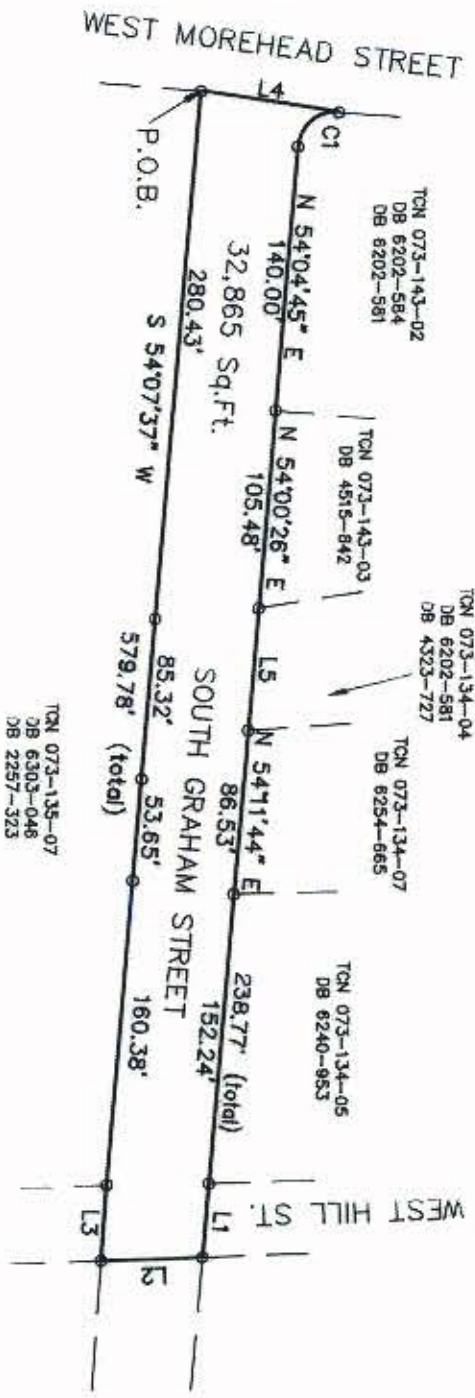


CURVE	RADIUS	LENGTH	TANGENT	CHORD	BEARING	DELTA
C1	20.00'	31.20'	19.78'	28.13'	N 80°54'58" W	89°22'36"

LINE	DIRECTION	DISTANCE
L1	N 54°09'11" E	39.05'
L2	S 42°43'00" E	52.99'
L3	S 53°19'23" W	40.02'
L4	N 31°54'34" W	73.20'
L5	N 54°08'14" E	65.21'



*Kenneth M. Green*  
KENNETH M. GREEN, RLS  
L-3512

POWER ENGINEERING COMPANY, INC. HAS PERFORMED NO BOUNDARY FIELD WORK AT THIS TIME.

BOUNDARY & ACREAGE INFORMATION TAKEN FROM THE COMPLETED MAP FOR THE CITY OF CHARLOTTE DATED SEPTEMBER 15, 1993 BY POWER ENGINEERING COMPANY, INC. AND HAS NOT BEEN FIELD VERIFIED BY POWER ENGINEERING COMPANY, INC.



CHARLOTTE  
ENGINEERING DEPARTMENT

A MAP OF  
SOUTH GRAHAM STREET  
R/W ABANDONMENT  
PREPARED FOR  
CITY OF CHARLOTTE

REVISIONS	JOB NO.
DRAWN BY: M.A.L.	512-88-678
CHECKED BY: K.M.G.	FILE NO.
DATE: NOV 19, 1993	SHEET 1
SCALE: 1"=100'	2

POWER ENGINEERING COMPANY, INC.

ENGINEERS - PLANNERS - SURVEYORS

P.O. BOX 41181 CHARLOTTE, NORTH CAROLINA 28241  
PH: (704)588-4204 FAX (704)588-1838



As Quoted Book 7676 Page 018-024 70.14

10-182