

I, DAVID H. SNIDER, CERTIFY THAT THIS PLAT WAS PREPARED UNDER MY SUPERVISION AND THAT THE PLAT WAS PREPARED FOR THE PURPOSE OF EASEMENTS ONLY, AND IS NOT INTENDED TO BE A BOUNDARY SURVEY OF PROPERTY SHOWN.

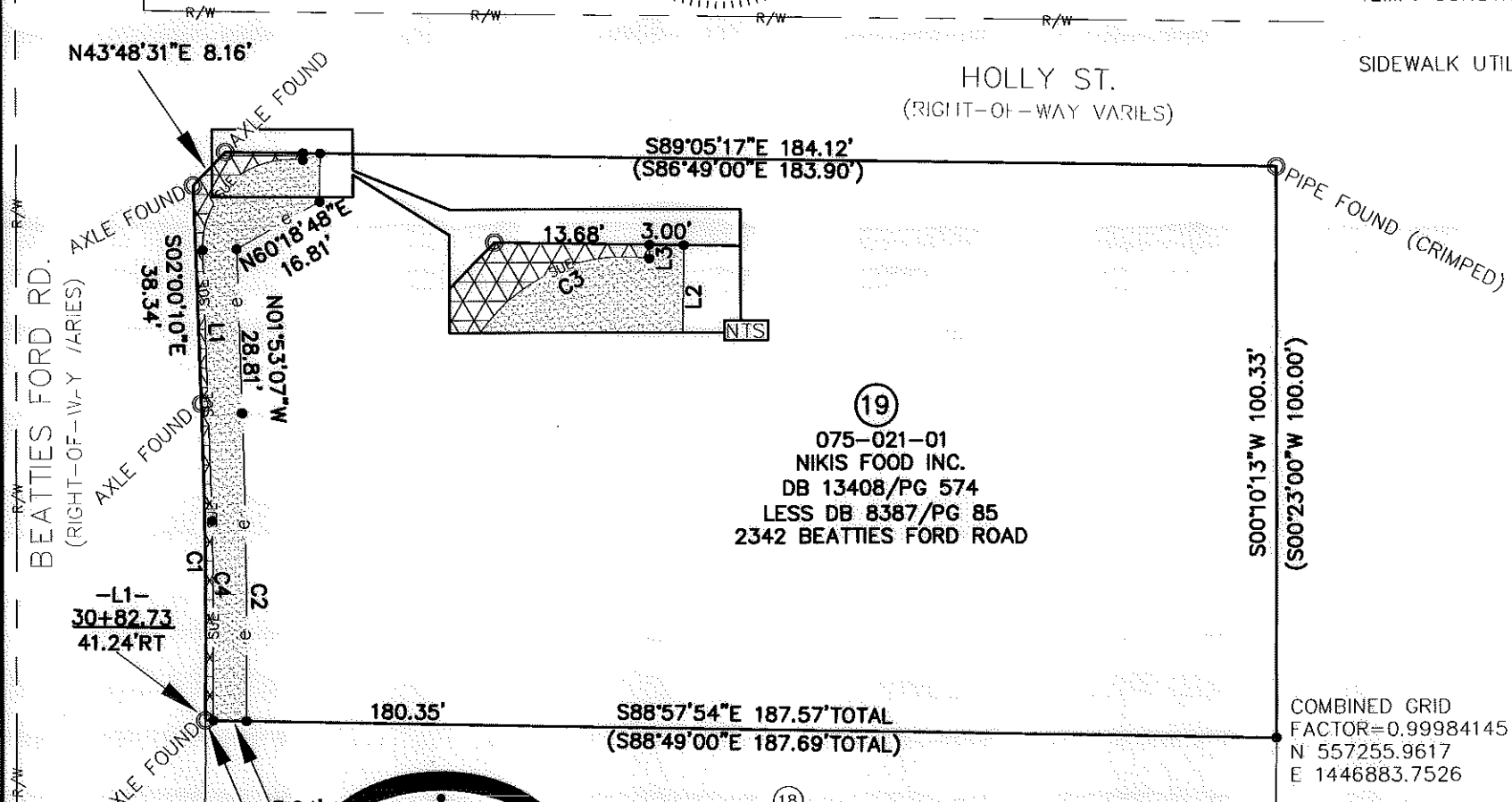
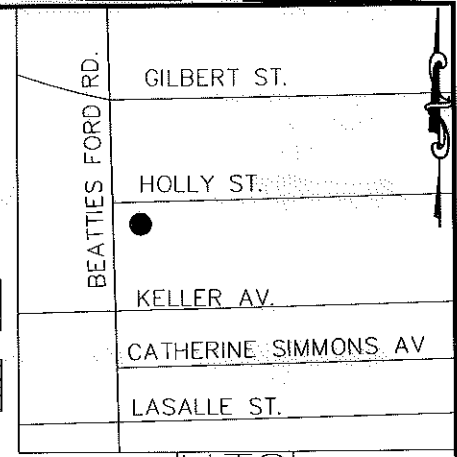
*David H. Snider 11/5/2010*  
 DAVID H. SNIDER, NC P.L.S. L-2942 DATE



LINE TABLE		
LINE	LENGTH	BEARING
L1	47.48	N01°53'07"W
L2	1.21	N00°54'43"E
L3	8.50	N00°45'18"E

LEGEND

- IRON PIN FOUND
- CALCULATED POINT
- LINES SURVEYED
- LINES NOT SURVEYED
- TEMP. CONSTRUCTION EASEMENT
- SIDEWALK UTILITY EASEMENT



CURVE TABLE				
CURVE	LENGTH	RADIUS	CHORD	BEARING
C1	55.67	1186.92	55.66'	N00°35'12"W
C2	54.13	1216.00	54.13'	N00°36'36"W
C3	27.07	15.50	23.76'	S48°08'30"W
C4	35.16	1209.62	35.16'	S00°11'15"E

(19)  
 075-021-01  
 NIKIS FOOD INC.  
 DB 13408/PG 574  
 LESS DB 8387/PG 85  
 2342 BEATTIES FORD ROAD

(18)  
 075-021-02  
 ANOTHER CHOICE FOR  
 BLACK CHILDREN INC.  
 DB 15391/PG 698  
 2340 BEATTIES FORD ROAD

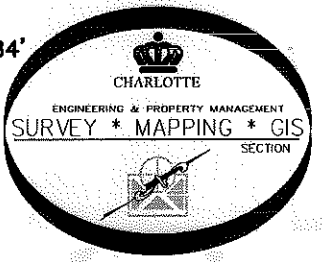
COMBINED GRID  
 FACTOR=0.99984145  
 N 557255.9617  
 E 1446883.7526

STATE OF NORTH CAROLINA  
 COUNTY OF MECKLENBURG

I, \_\_\_\_\_, REVIEW OFFICER OF MECKLENBURG COUNTY, CERTIFY THAT THE MAP OR PLAT TO WHICH THIS CERTIFICATION IS AFFIXED MEETS ALL STATUTORY REQUIREMENTS FOR RECORDING.

REVIEW OFFICER \_\_\_\_\_ DATE \_\_\_\_\_

PREPARED BY:  
 CITY OF CHARLOTTE  
 ENGINEERING DEPARTMENT  
 600 EAST FOURTH STREET  
 CHARLOTTE, NC 28202  
 704-336-2291.



- 1) BEARINGS AND DISTANCES SHOWN IN PARENTHESES ARE BASED ON RECORDED MAP INFORMATION.
- 2) TOTAL AREA 18,840 SQ. FT.
- 3) TEMP CONSTRUCTION EASEMENT 708 SQ. FT.
- 4) SIDEWALK UTILITY EASEMENT 186 SQ. FT.
- 5) AREA REMAINING 18,840 SQ. FT.

		CHARLOTTE ENGINEERING DEPARTMENT	
REVISIONS		BEATTIES FORD ROAD BUSINESS CORRIDOR PROJECT	
SCALE 0 1" = 30"		PROPERTY OF <b>NIKIS FOOD INC.</b> CHARLOTTE, MECKLENBURG CO., NC	
DRAWN BY P.S.	CHECKED BY DS	SURVEY SUPVR <i>DM</i>	
DATE	JOB NO. 512-07-062 207062 SHEET 1 OF 1		