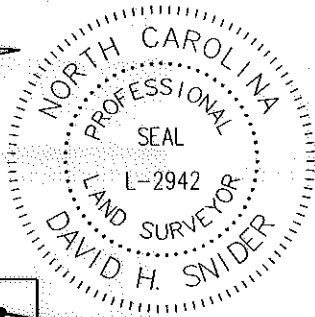


I, DAVID H. SNIDER, CERTIFY THAT THIS PLAT WAS PREPARED UNDER MY SUPERVISION AND THAT THE PLAT WAS PREPARED FOR THE PURPOSE OF EASEMENTS ONLY, AND IS NOT INTENDED TO BE A BOUNDARY SURVEY OF PROPERTY SHOWN.

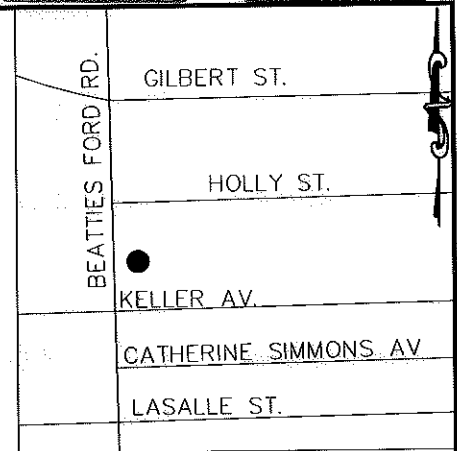
David H. Snider 4/13/11
 DAVID H. SNIDER, NC P.L.S. L-2942 DATE



(17)
 075-021-03
 JOBE PARTNERSHIP
 DB 8175/PG 49
 2332 BEATTIES FORD ROAD

LEGEND

- IRON PIN FOUND
- CALCULATED POINT
- LINES SURVEYED
- LINES NOT SURVEYED
- TEMP. CONSTRUCTION EASEMENT
- SIDEWALK UTILITY EASEMENT



COMBINED GRID
 FACTOR=0.99984145
 N 557085.35
 E 1446846.15

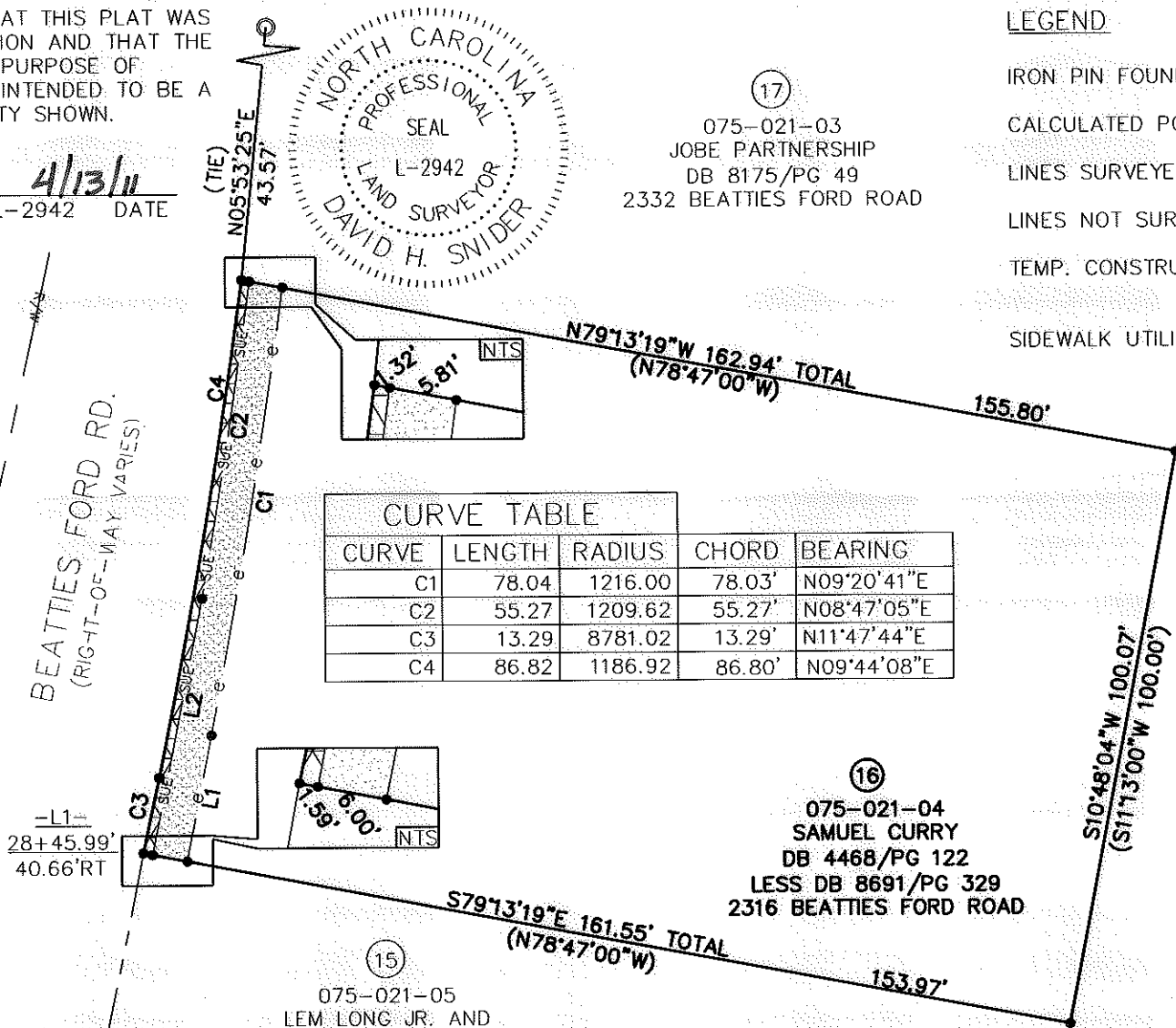
STATE OF NORTH CAROLINA
 COUNTY OF MECKLENBURG

I, _____, REVIEW OFFICER OF MECKLENBURG COUNTY, CERTIFY THAT THE MAP OR PLAT TO WHICH THIS CERTIFICATION IS AFFIXED MEETS ALL STATUTORY REQUIREMENTS FOR RECORDING.

REVIEW OFFICER _____ DATE _____

LINE	LENGTH	BEARING
L1	22.07	N11°11'00"E
L2	44.84	N11°10'57"E

CURVE	LENGTH	RADIUS	CHORD	BEARING
C1	78.04	1216.00	78.03'	N09°20'41"E
C2	55.27	1209.62	55.27'	N08°47'05"E
C3	13.29	8781.02	13.29'	N11°47'44"E
C4	86.82	1186.92	86.80'	N09°44'08"E



(15)
 075-021-05
 LEM LONG JR. AND
 WIFE EDDIE VAUGHN LONG
 DB 2838/PG 457
 2312 BEATTIES FORD ROAD

(16)
 075-021-04
 SAMUEL CURRY
 DB 4468/PG 122
 LESS DB 8691/PG 329
 2316 BEATTIES FORD ROAD

- 1) BEARINGS AND DISTANCES SHOWN IN PARENTHESES ARE BASED ON RECORDED MAP INFORMATION.
- 2) TOTAL AREA 16,170 SQ. FT.
- 3) TEMP CONSTRUCTION EASEMENT 588 SQ. FT.
- 4) SIDEWALK UTILITY EASEMENT 142 SQ. FT.
- 5) AREA REMAINING 16,170 SQ. FT.



PREPARED BY:
 CITY OF CHARLOTTE
 ENGINEERING DEPARTMENT
 600 EAST FOURTH STREET
 CHARLOTTE, NC 28202
 704-336-2291

		CHARLOTTE ENGINEERING DEPARTMENT
REVISIONS	BEATTIES FORD ROAD BUSINESS CORRIDOR PROJECT	JOB NO. 512-07-062
4/12/11 ADJOINER	PROPERTY OF SAMUEL CURRY CHARLOTTE, MECKLENBURG CO., NC	207062
SCALE 1" = 30'	DRAWN BY P.S.	SHEET 1
DATE	CHECKED BY DS	OF 1