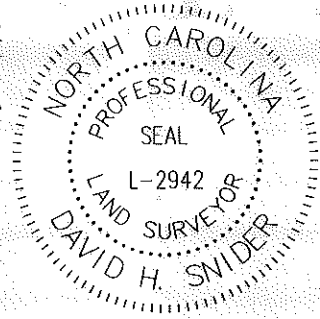


I, DAVID H. SNIDER, CERTIFY THAT THIS PLAT WAS PREPARED UNDER MY SUPERVISION AND THAT THE PLAT WAS PREPARED FOR THE PURPOSE OF EASEMENTS ONLY, AND IS NOT INTENDED TO BE A BOUNDARY SURVEY OF PROPERTY SHOWN.



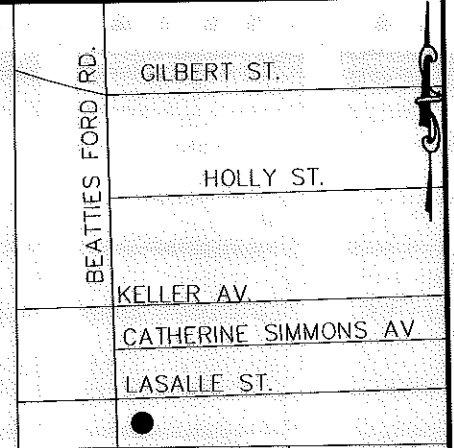
David H. Snider 11/9/2010
 DAVID H. SNIDER, NC P.L.S. L-2942 DATE

STATE OF NORTH CAROLINA
 COUNTY OF MECKLENBURG

I, _____ REVIEW OFFICER OF MECKLENBURG COUNTY, CERTIFY THAT THE MAP OR PLAT TO WHICH THIS CERTIFICATION IS AFFIXED MEETS ALL STATUTORY REQUIREMENTS FOR RECORDING.

REVIEW OFFICER _____ DATE _____

③
 075-036-03
 DUBLIN REALTY COMPANY INC.
 DB 3991/PG 242
 2012 BEATTIES FORD ROAD

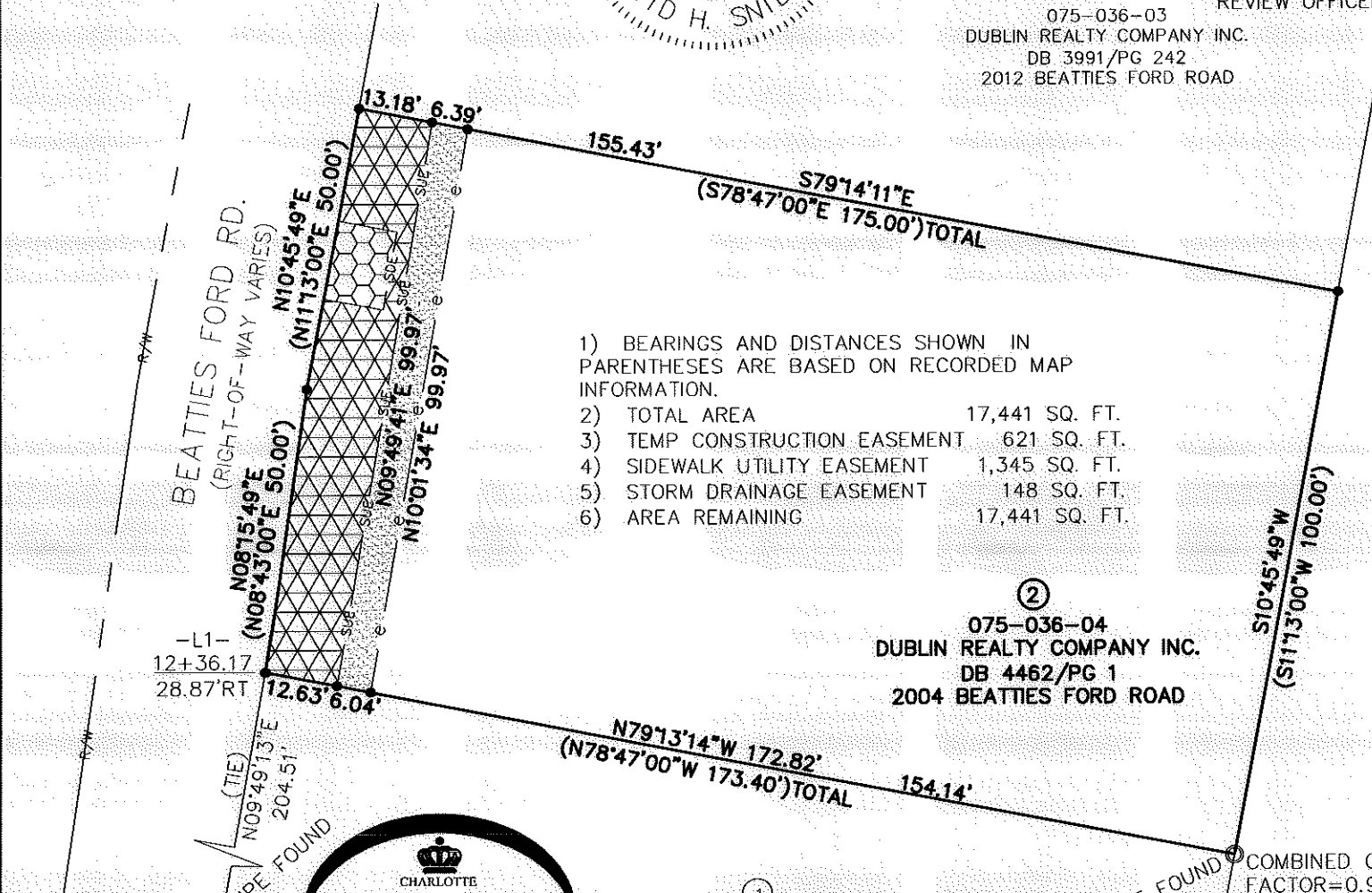


LEGEND

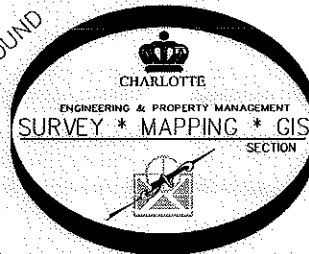
- IRON PIN FOUND ○
- CALCULATED POINT ●
- LINES SURVEYED ———
- LINES NOT SURVEYED - - -
- TEMP. CONSTRUCTION EASEMENT [Pattern]
- SIDEWALK UTILITY EASEMENT [Pattern]
- STORM DRAINAGE EASEMENT [Pattern]

NTS

- 1) BEARINGS AND DISTANCES SHOWN IN PARENTHESES ARE BASED ON RECORDED MAP INFORMATION.
- 2) TOTAL AREA 17,441 SQ. FT.
- 3) TEMP CONSTRUCTION EASEMENT 621 SQ. FT.
- 4) SIDEWALK UTILITY EASEMENT 1,345 SQ. FT.
- 5) STORM DRAINAGE EASEMENT 148 SQ. FT.
- 6) AREA REMAINING 17,441 SQ. FT.



PREPARED BY:
 CITY OF CHARLOTTE
 ENGINEERING DEPARTMENT
 600 EAST FOURTH STREET
 CHARLOTTE, NC 28202
 704-336-2291



①
 075-036-06
 QUILLIE SMITH
 DB 9155/PG 193
 1930 BEATTIES FORD ROAD

②
 075-036-04
 DUBLIN REALTY COMPANY INC.
 DB 4462/PG 1
 2004 BEATTIES FORD ROAD

CHARLOTTE ENGINEERING DEPARTMENT		
REVISIONS	BEATTIES FORD ROAD BUSINESS CORRIDOR PROJECT	JOB NO. 512-07-062
		207062
PROPERTY OF DUBLIN REALTY COMPANY INC.		SHEET 1
CHARLOTTE, MECKLENBURG CO., NC		OF 1
DRAWN BY P.S.	CHECKED BY DS	SURVEY SUPVR. <i>DS</i>
DATE		