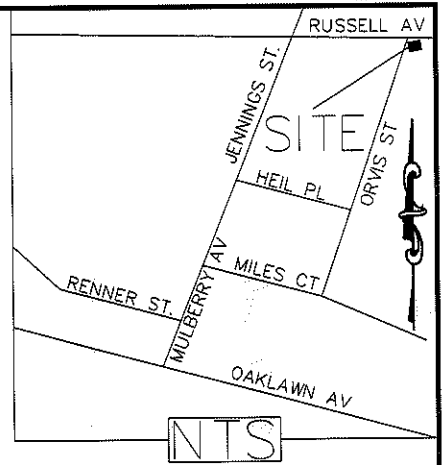


I, DAVID H. SNIDER, CERTIFY THAT THIS PLAT WAS PREPARED UNDER MY SUPERVISION AND THAT THE PLAT WAS PREPARED FOR THE PURPOSE OF EASEMENTS ONLY, AND IS NOT INTENDED TO BE A BOUNDARY SURVEY OF PROPERTY SHOWN.

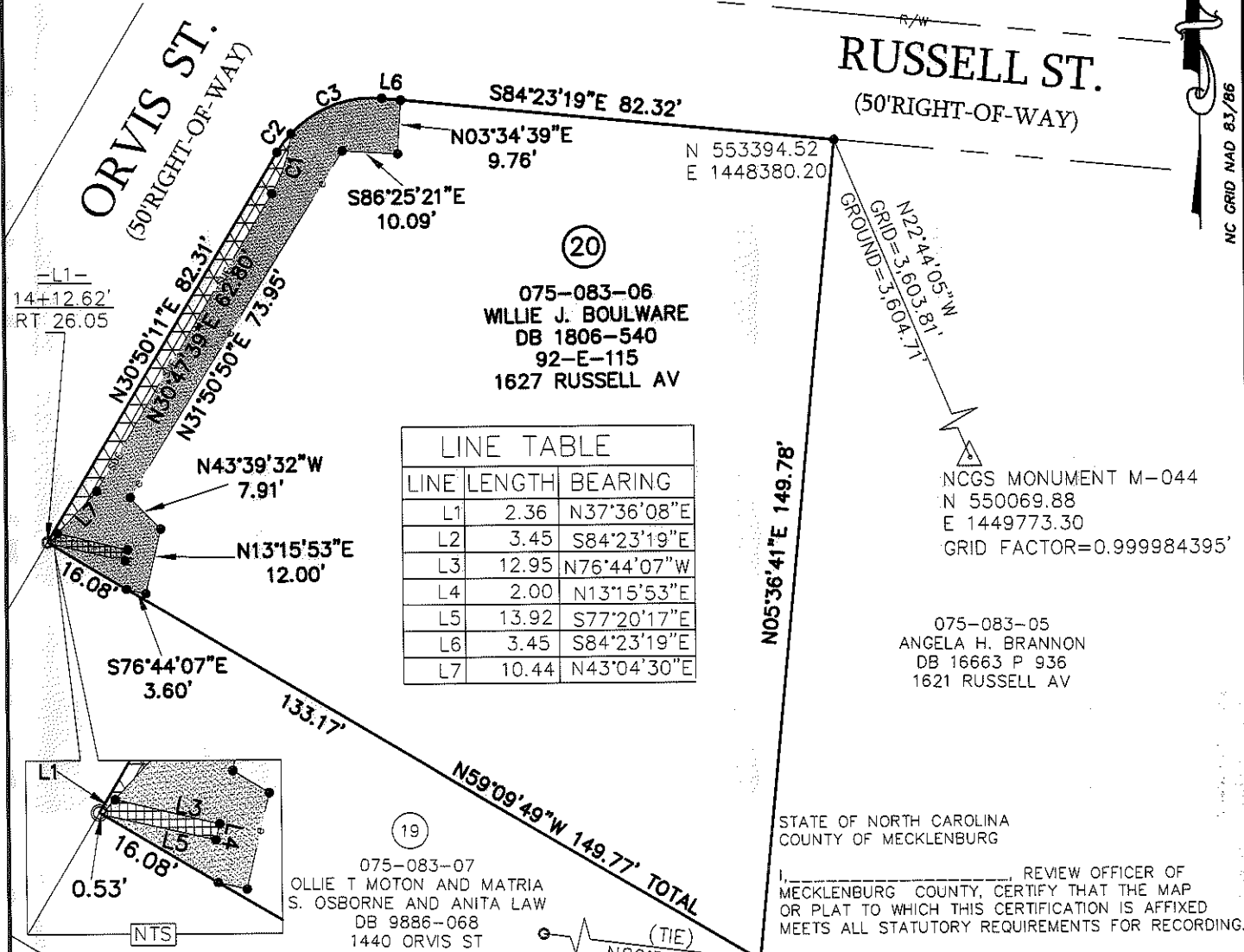
David H. Snider 9/29/11
 DAVID H. SNIDER, NC P.L.S. L-2942 DATE



LEGEND

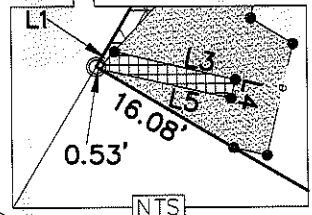
- NCGS MONUMENTS
- IRON PIN FOUND
- CALCULATED POINT
- LINES SURVEYED
- LINES NOT SURVEYED
- TEMP. CONSTRUCTION EASEMENT
- SIDEWALK UTILITY EASEMENT
- UTILITY EASEMENT

- 1) BEARINGS AND DISTANCES SHOWN IN PARENTHESES ARE BASED ON RECORDED MAP INFORMATION.
- 2) TOTAL AREA 14,201 SQ. FT.
- 3) TEMP CONSTRUCTION EASEMENT 855 SQ. FT.
- 4) SIDEWALK UTILITY EASEMENT 233 SQ. FT.
- 5) UTILITY EASEMENT 27 SQ. FT.
- 6) AREA REMAINING 14,201 SQ. FT.



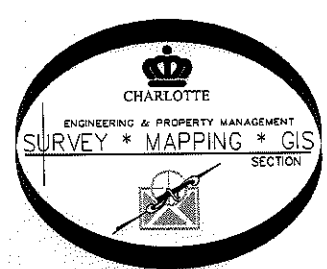
LINE TABLE

LINE	LENGTH	BEARING
L1	2.36	N37°36'08"E
L2	3.45	S84°23'19"E
L3	12.95	N76°44'07"W
L4	2.00	N13°15'53"E
L5	13.92	S77°20'17"E
L6	3.45	S84°23'19"E
L7	10.44	N43°04'30"E



CURVE TABLE

CURVE	LENGTH	RADIUS	CHORD	BEARING
C1	11.57	27.00	11.48'	S18°31'16"W
C2	4.29	20.00	4.28'	S37°50'13"W
C3	18.28	20.00	17.65'	S69°11'36"W
C4				



PREPARED BY:
 CITY OF CHARLOTTE
 ENGINEERING DEPARTMENT
 600 EAST FOURTH STREET
 CHARLOTTE, NC 28202
 704-336-2291

CHARLOTTE ENGINEERING DEPARTMENT

ORVIS ST. SIDEWALK

PROPERTY OF
WILLIE J. BOULWARE
 CHARLOTTE, MECKLENBURG CO., NC

REVISIONS	JOB NO. 512-09-014
9/29/11 SUE HATCHING	209014
9/6/11 SUE & e	SHEET 1
2/16/11 OWNERSHIP INFO	OF 1
SCALE 1"=30'	
DRAWN BY: P.S.	CHECKED BY DS SURVEY SUPVR. <i>DH</i>
DATE	

K:\AutoCad\En_su-LD4\209014 ORVIS ST\dwg\Plats\#20 ORVIS 075-083-06

ACQUISITION BY DB 26848 PG 7-13