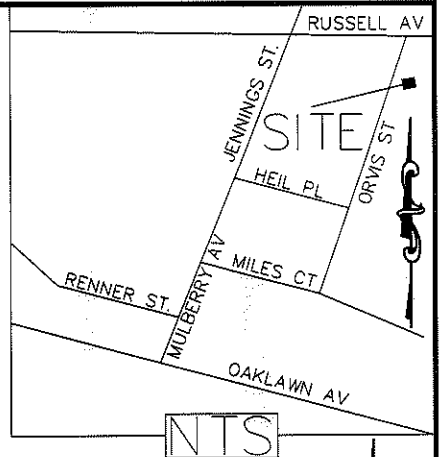


I, DAVID H. SNIDER, CERTIFY THAT THIS PLAT WAS PREPARED UNDER MY SUPERVISION AND THAT THE PLAT WAS PREPARED FOR THE PURPOSE OF EASEMENTS ONLY, AND IS NOT INTENDED TO BE A BOUNDARY SURVEY OF PROPERTY SHOWN.

David H. Snider 9/13/11
 DAVID H. SNIDER, NC P.L.S. L-2942 DATE



LEGEND

- NCGS MONUMENTS:
- IRON PIN FOUND:
- CALCULATED POINT:
- LINES SURVEYED:
- LINES NOT SURVEYED:
- TEMP. CONSTRUCTION EASEMENT:
- SIDEWALK UTILITY EASEMENT:

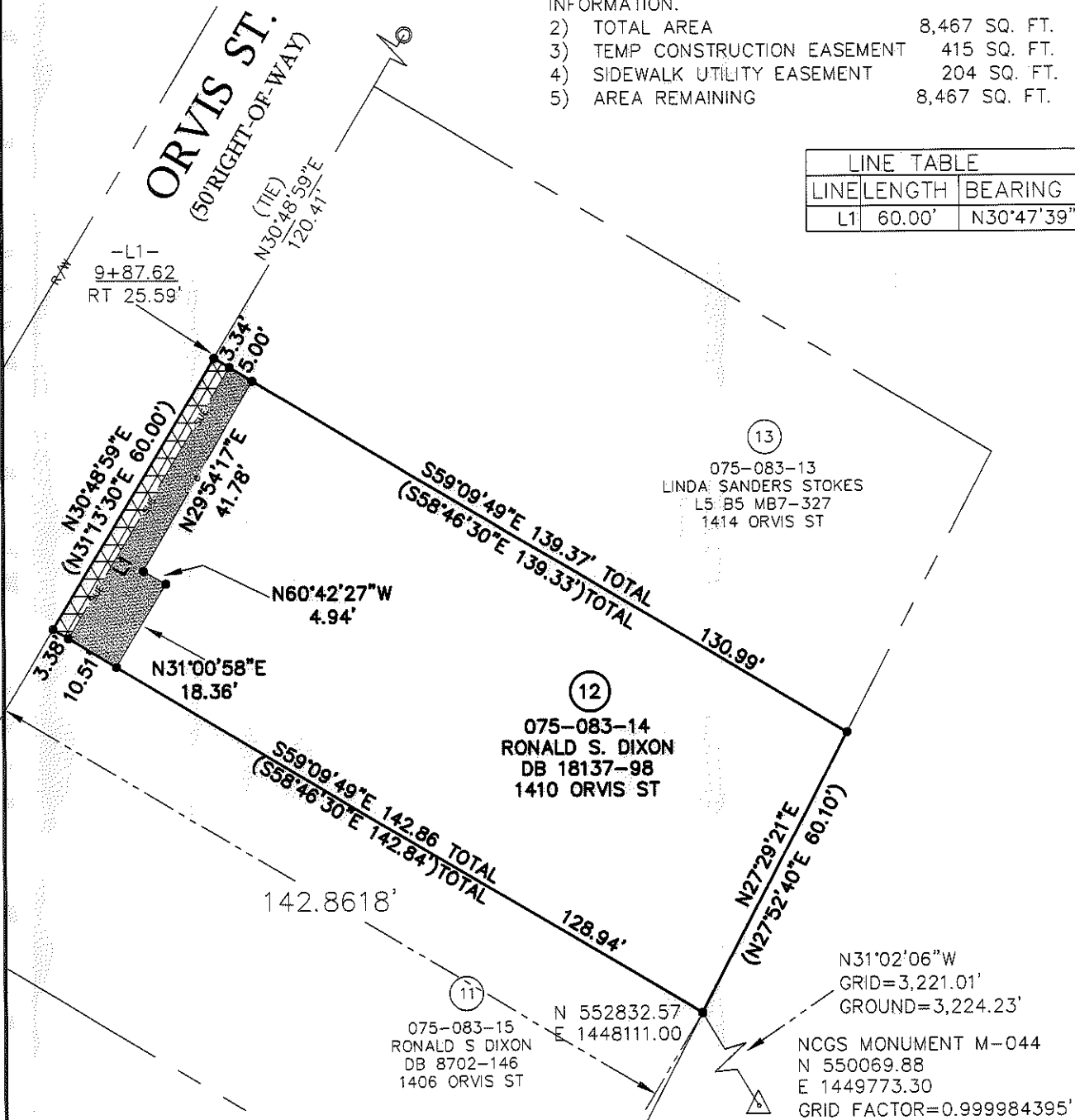
STATE OF NORTH CAROLINA
 COUNTY OF MECKLENBURG

I, _____ REVIEW OFFICER OF MECKLENBURG COUNTY, CERTIFY THAT THE MAP OR PLAT TO WHICH THIS CERTIFICATION IS AFFIXED MEETS ALL STATUTORY REQUIREMENTS FOR RECORDING.

REVIEW OFFICER _____ DATE _____

- 1) BEARINGS AND DISTANCES SHOWN IN PARENTHESES ARE BASED ON RECORDED MAP INFORMATION.
- 2) TOTAL AREA 8,467 SQ. FT.
- 3) TEMP CONSTRUCTION EASEMENT 415 SQ. FT.
- 4) SIDEWALK UTILITY EASEMENT 204 SQ. FT.
- 5) AREA REMAINING 8,467 SQ. FT.

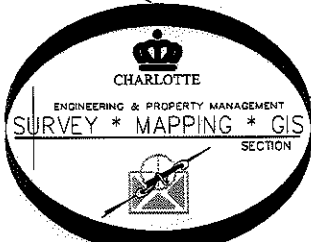
LINE TABLE		
LINE	LENGTH	BEARING
L1	60.00'	N30°47'39"E



NC GRID NAD 83/86

ACQUISITION BY DB 26962 PG 484-489

PREPARED BY:
 CITY OF CHARLOTTE
 ENGINEERING DEPARTMENT
 600 EAST FOURTH STREET
 CHARLOTTE, NC 28202
 704-336-2291



		CHARLOTTE ENGINEERING DEPARTMENT	
REVISIONS		ORVIS ST. SIDEWALK	JOB NO. S12-09-014
9/2/11 SUE & e			209014
SCALE 0 1" = 30' 1"		PROPERTY OF RONALD S. DIXON CHARLOTTE, MECKLENBURG CO., NC	
DRAWN BY P.S.			
DATE		CHECKED BY DS	SURVEY SUPVR. <i>DSK</i>
K:\AutoCad\En_ls_u-LD4\209014 ORVIS ST\dwg\Plats\#12 ORVIS 075-083-14			