

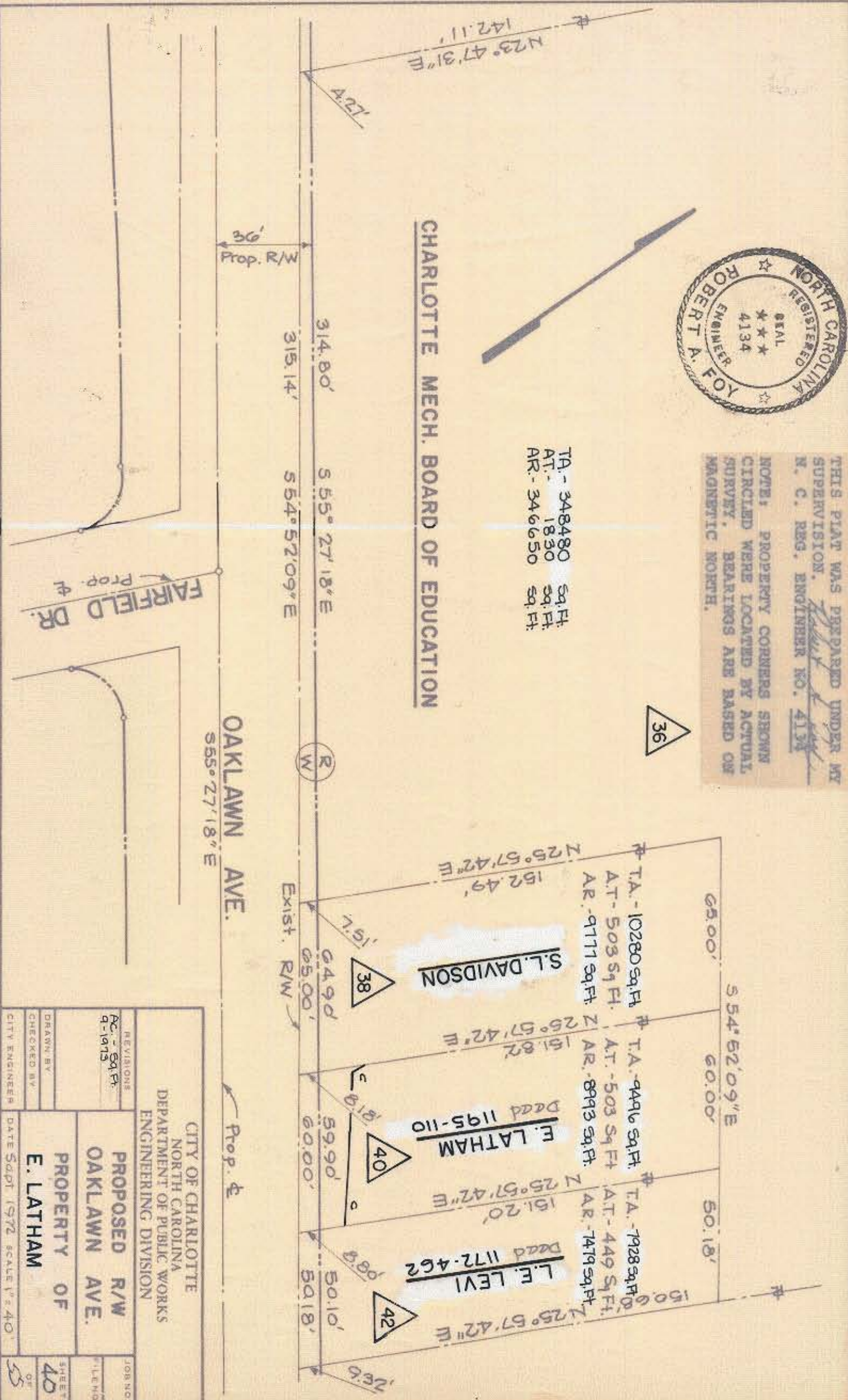


THIS PLAT WAS PREPARED UNDER MY SUPERVISION. N. C. REG. ENGINEER NO. 4134

NOTE: PROPERTY CORNERS SHOWN CIRCLED WERE LOCATED BY ACTUAL SURVEY. BEARINGS ARE BASED ON MAGNETIC NORTH.

TA - 348480 sq. Ft.
 AT - 1830 sq. Ft.
 AR - 346650 sq. Ft.

CHARLOTTE MECH. BOARD OF EDUCATION



CITY OF CHARLOTTE NORTH CAROLINA DEPARTMENT OF PUBLIC WORKS ENGINEERING DIVISION	
PROPOSED R/W OAKLAWN AVE.	PROPERTY OF E. LATHAM
REVISIONS AC - 84 Ft. 9-1975	JOB NO. SHEET 40 OF 55
DRAWN BY CHECKED BY CITY ENGINEER	DATE Sept 1972 SCALE 1" = 40'

35-083-34