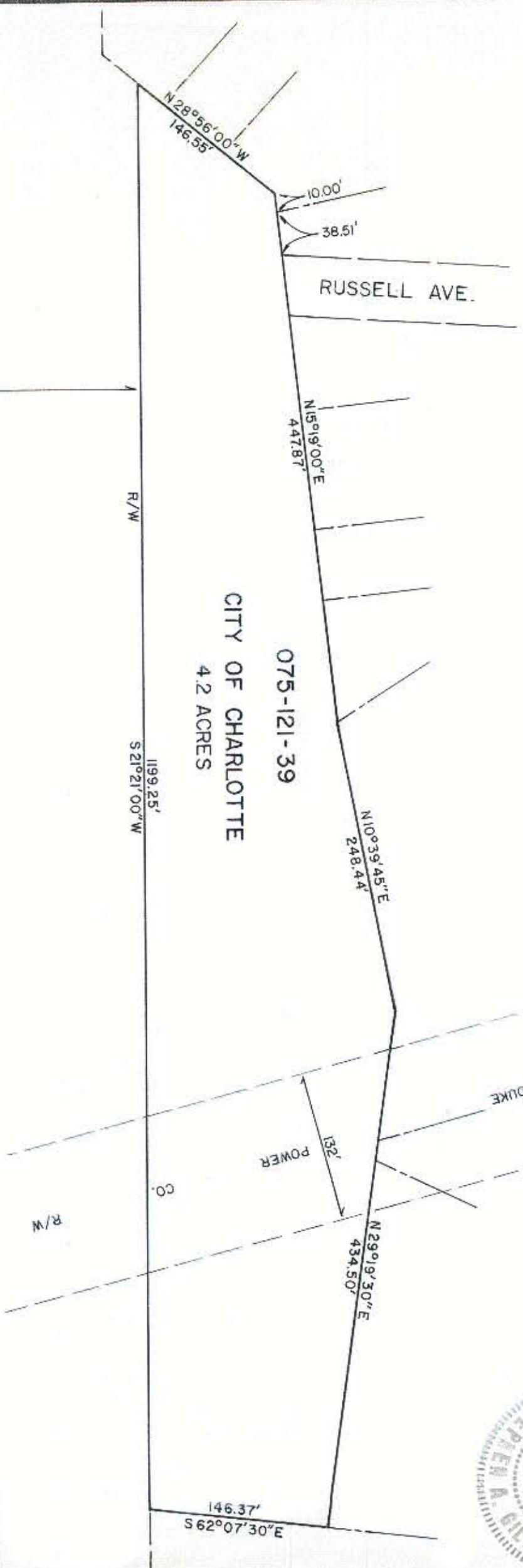


NOTE: Property corners and circled wires located by actual survey. Readings are based on NCDOT-IT7 CONST. PLANS

This plat was prepared under my supervision
Stephen A. Gilbert
 N. C. Reg. Surveyor No. L-17785



INTERSTATE 77

075-121-39
 CITY OF CHARLOTTE
 4.2 ACRES

CITY OF CHARLOTTE NORTH CAROLINA DEPARTMENT OF PUBLIC WORKS ENGINEERING DIVISION		PROPERTY OF CITY OF CHARLOTTE		JOB NO. 516-66-633
REVISIONS TIE TO RUSSELL AVE A-2-77		1-77 dt RUSSELL AVE.		FILE NO. RW-134
DRAWN BY: KJC CHECKED BY: SAG CITY ENGINEER		DATE JAN. 11, 1977 SCALE 1" = 100'		SHEET 1 OF 1