

I-77



AILEEN ST.

GIBBS ST.

KENNEY ST.

EUREKA ST.

WAYT ST.

I-77 R/W 7

COURT

C.D. SPANGLER JR.
Deed: 2330-591
Map Book 6-212

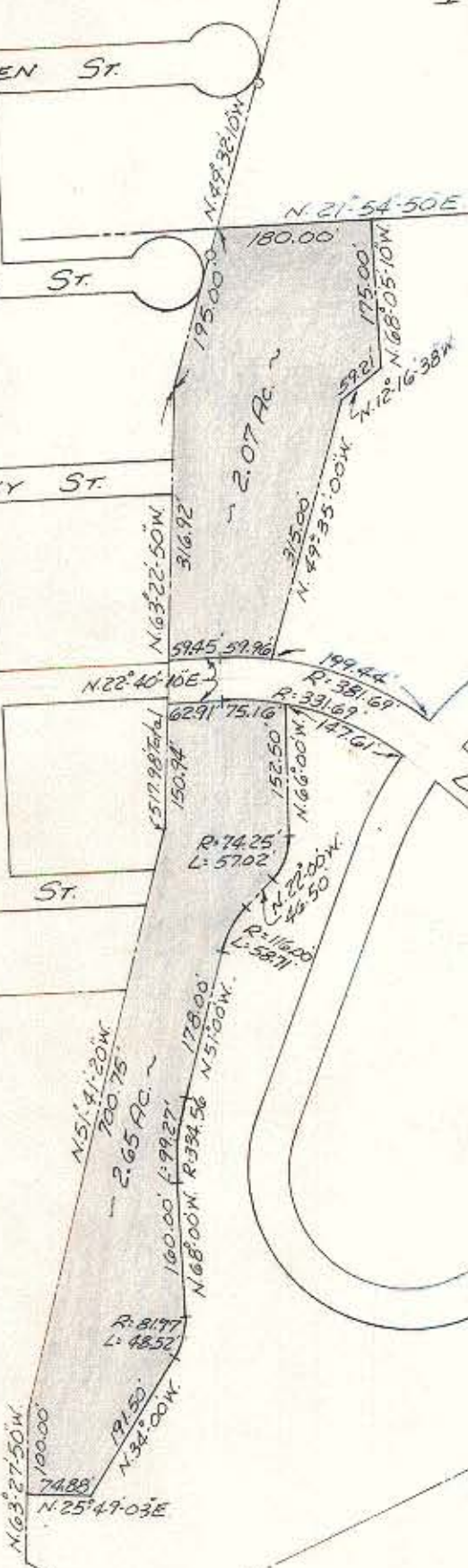
HORNE

DOUBLE

OAKS ROAD

HORNE DRIVE

MOSS ST.



This plat was prepared under my supervision C.D. Reading

N.C. Reg. Engineer No. 3659

Approved by _____
R/W Agent

STATESVILLE ROAD

CITY OF CHARLOTTE
NORTH CAROLINA
ENGINEERING DEPARTMENT

REVISIONS Added Tie Distances J.S.B	PROPOSED MINI PARK PROPERTY	JOB NO. 213 20-222
DRAWN BY <u>Byrd</u>		FILE NO.
CHECKED BY <u>JTT</u>	Property of C.D. SPANGLER JR.	SHEET 1
CITY ENGINEER	DATE <u>July, 1970</u> SCALE 1"=200'	OF 1

NOTE: Property corners shown circled were located by actual survey. Bearings are based on Record Map 6-212

