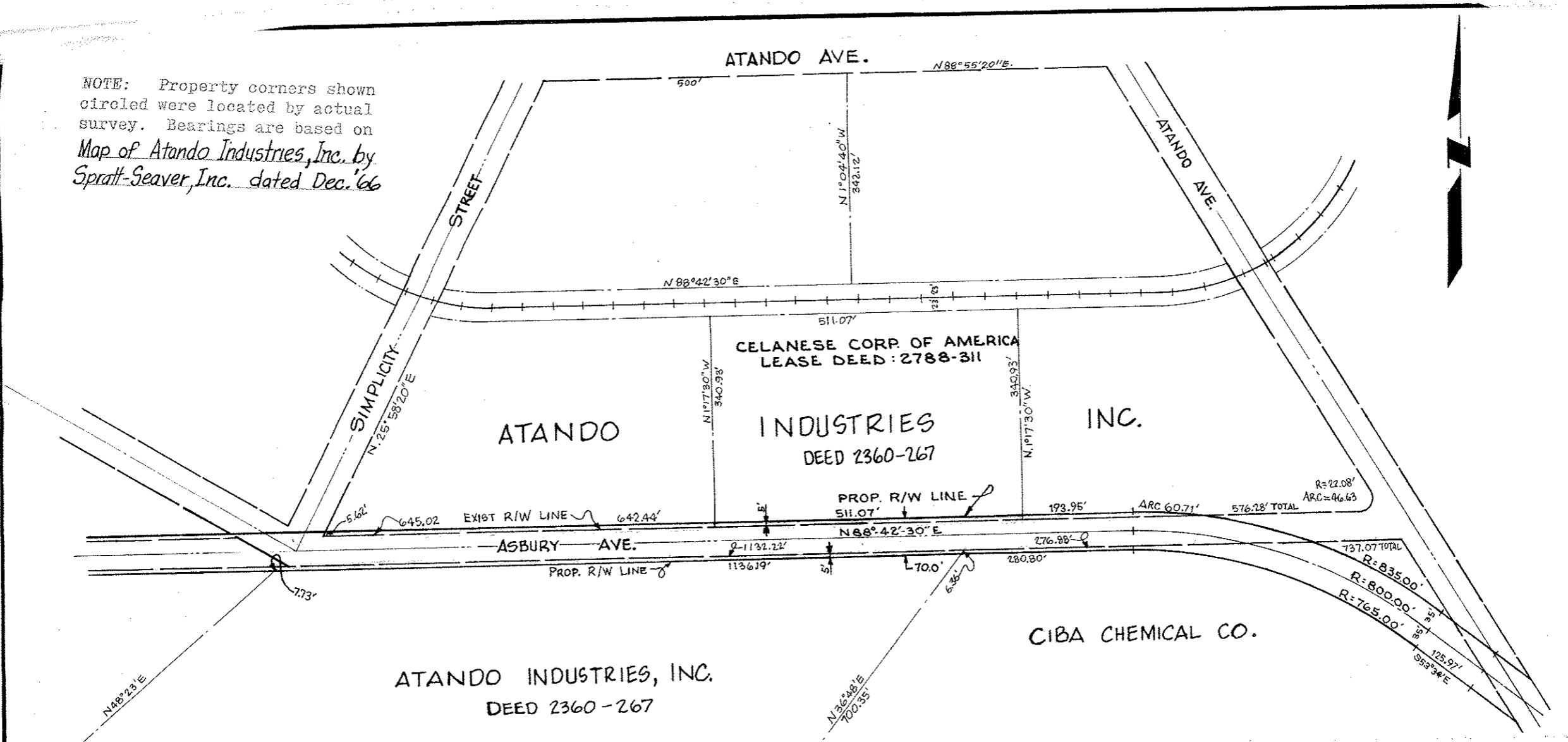


NOTE: Property corners shown circled were located by actual survey. Bearings are based on Map of Atando Industries, Inc. by Spratt-Seaver, Inc. dated Dec. '66



This plat was prepared under my supervision
 N.C. Reg. Engineer No _____

Approved by _____
 R/W Agent

CITY OF CHARLOTTE NORTH CAROLINA ENGINEERING DEPARTMENT		ATANDO AVENUE RELOCATION	JOB NO. 512-65- 381
			FILE NO.
		PROPERTY OF ATANDO INDUSTRIES, INC.	SHEET
REVISIONS			OF
DRAWN BY	A.M.	DATE DEC. 167	SCALE 1"=200'
CHECKED BY			
CITY ENGINEER			