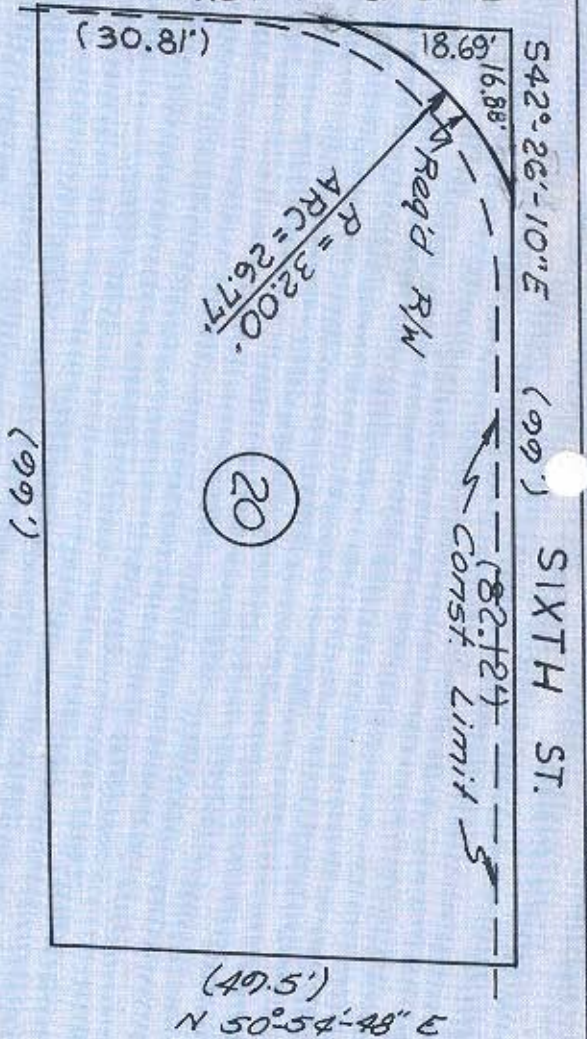




CHURCH ST.

(49.5') N51°21'-27"E



| Area | Sq. Ft |
|-----------|--------|
| Taking | 109 |
| Severance | 4781 |
| Total | 4890 |

THOMAS CADILLAC - OLDSMOBILE, INCORPORATED
 DEED BOOK 1413 PAGE 219 MAP 4-1
 BLOCK 2 LOT 24
 Scale: 1"=20'

Dead dimensions are
 in parentheses ().

Wilbur Smith and Associates, Inc. Design
 CONSULTING ENGINEERS
 COLUMBIA, S. C. WINSTON-SALEM, N. C. RICHMOND, VA.

Sixth St.
 Project

NOV. 1966

57

78-013-22