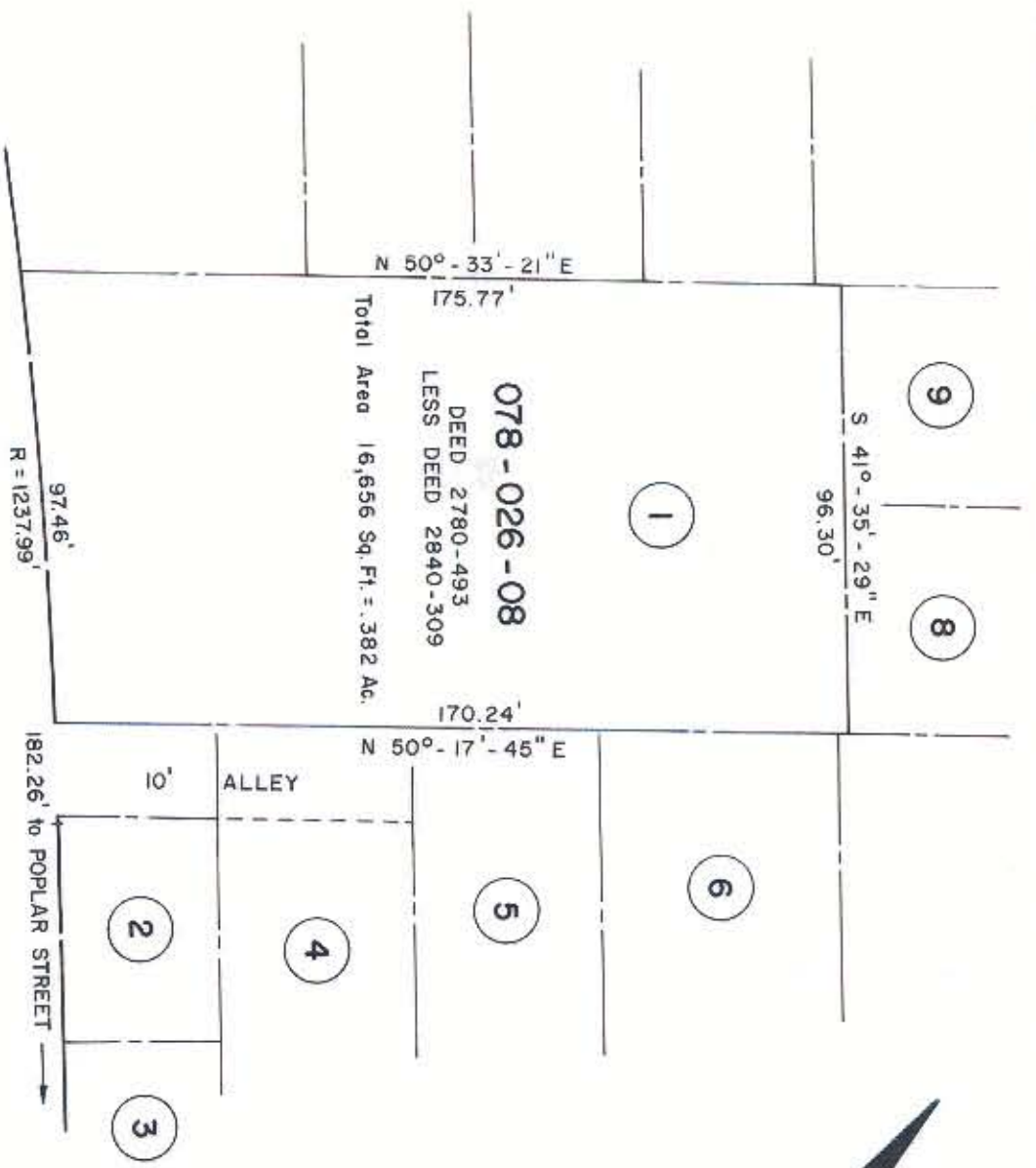


WEST SIXTH STREET



078-026-08  
 DEED 2780-493  
 LESS DEED 2840-309  
 Total Area 16,656 Sq. Ft. = .382 Ac.



NOTE: Property corners shown circled were located by actual survey. Bearings are based on SIXTH ST. PROJECT BY WILBUR SMITH, 1966

This plat was prepared under my supervision *Stephen A. Gilbert*  
 N.C. Reg. Engineer No. 6233

CITY OF CHARLOTTE NORTH CAROLINA DEPARTMENT OF PUBLIC WORKS ENGINEERING DIVISION		JOB NO.
REVISIONS	PROPERTY TO BE ACQUIRED BY CITY OF CHARLOTTE PROJECT NO. 516-75-188	FILE NO.
DRAWN BY HST	PARCEL NO. 1	SHEET 1
CHECKED BY <i>SMH</i>	DATE DEC. 5, 1975	SCALE 1" = 40' OF 13
CITY ENGINEER	CITY ENGINEER	CITY ENGINEER

FILE: 78-02613