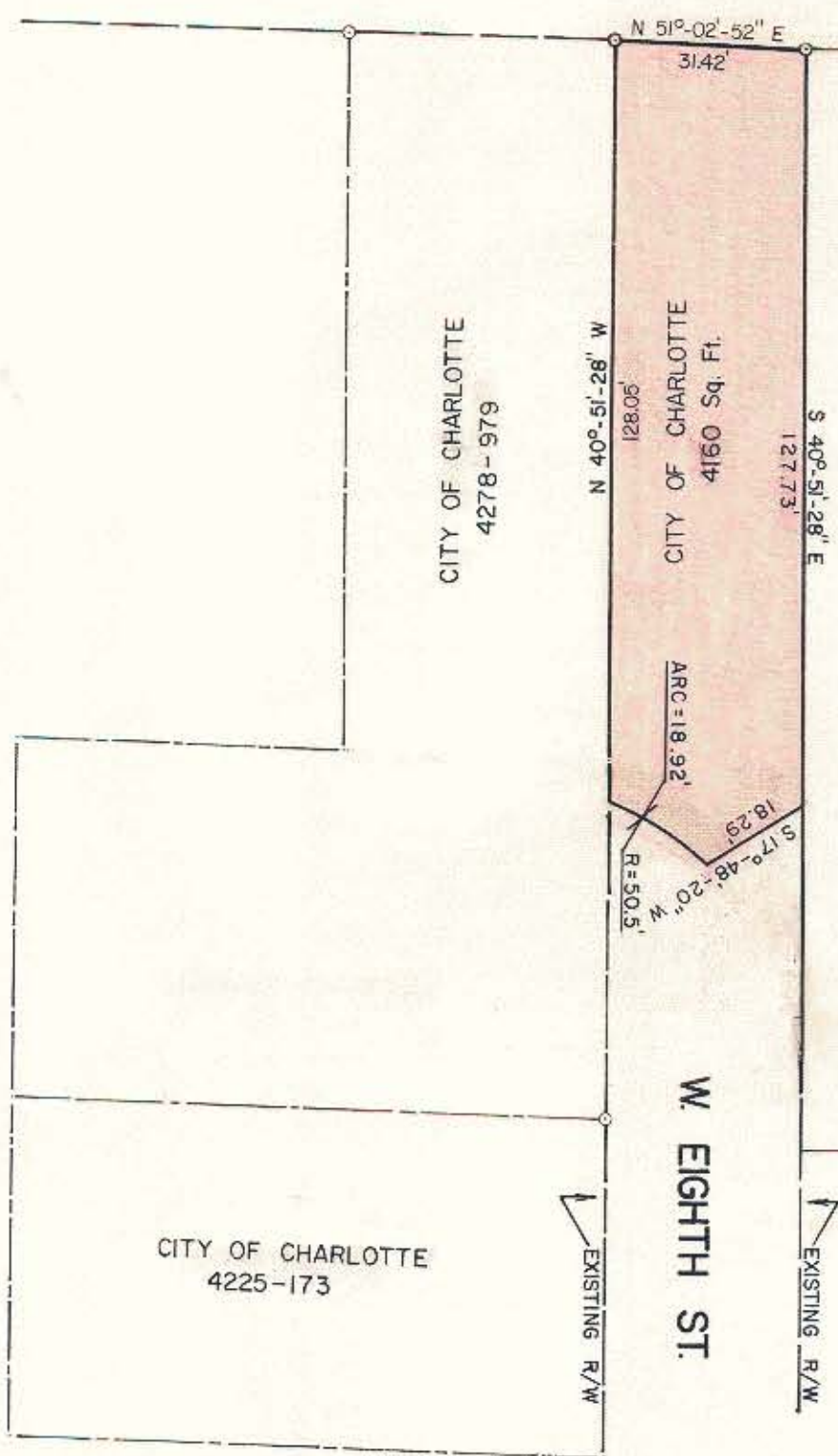


N. GRAHAM ST.



SHIRLEY G. WIGGINS
2838-38

CITY OF CHARLOTTE
4225-173



NOTE: Property corners shown circled were located by actual survey. Bearings are based on FOURTH WARD PARK BOUNDARY MAP

This plat was prepared under my supervision. *Stephen Alzibest*
N. C. Reg. Surveyor No. L-1785

CITY OF CHARLOTTE
NORTH CAROLINA
DEPARTMENT OF PUBLIC WORKS
ENGINEERING DIVISION

REVISIONS ARC, ARC LOCATION, BEARING, DIST. ON N. GRAHAM ST. 11/15/79 CAB RADIUS 12.5/79 CAB REDUCED CLOSED AREA 1/2/80 DRS	TEMPORARY CLOSING W. EIGHTH STREET AT N. GRAHAM STREET	JOB NO. 512-76-193 FILE NO.
	DRAWN BY CAB CHECKED BY 346 CITY ENGINEER	FOURTH WARD REDEVELOPMENT AREA
DATE MAY 2, 1979		SCALE 1" = 30'