

BEATTIES

FORD ROAD

J.C. SMITH UNIVERSITY

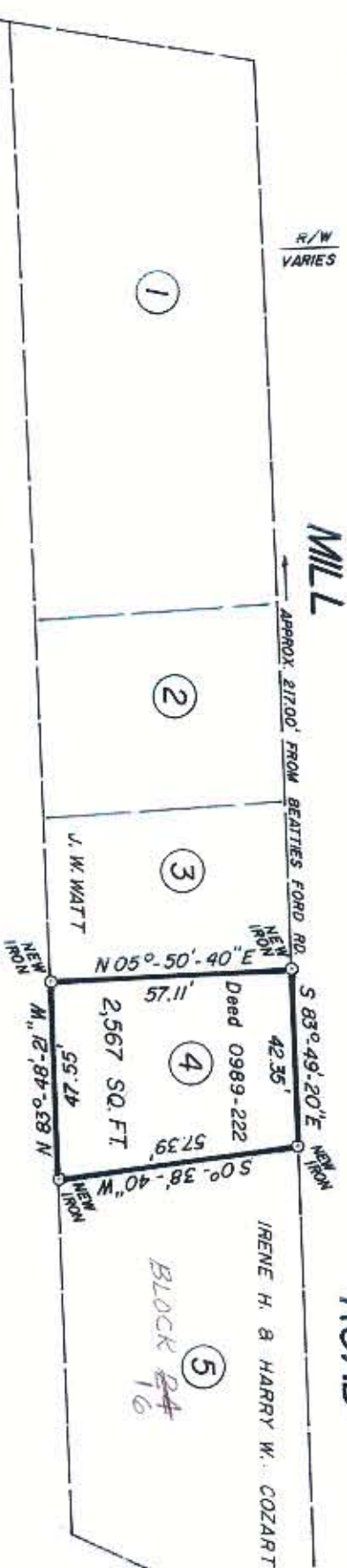
MILL

ROAD

BIDDLE ST

R/W
VARIES

APPROX. 217'00' FROM BEATTIES FORD RD.



This plat was prepared under my supervision
Stephen A. Gilbert
 N. C. Reg. Surveyor No. L-1785



NOTES: Property corners shown circled were located by actual survey. Bearings are based on RECORDED MAP BOOK 332
 PAGE 488.

CITY OF CHARLOTTE NORTH CAROLINA DEPARTMENT OF PUBLIC WORKS ENGINEERING DIVISION		FIVE POINTS COMMUNITY DEVELOPMENT STRATEGY AREA		JOB NO. 52105
REVISIONS	DRAWN BY HW	PROPERTY OF BEATRICE WILSON	SHEET 1	OF 1
CHECKED BY T	DATE AUG. 25, 1980 SCALE 1" = 40'	CITY ENGINEER		

78-211-03