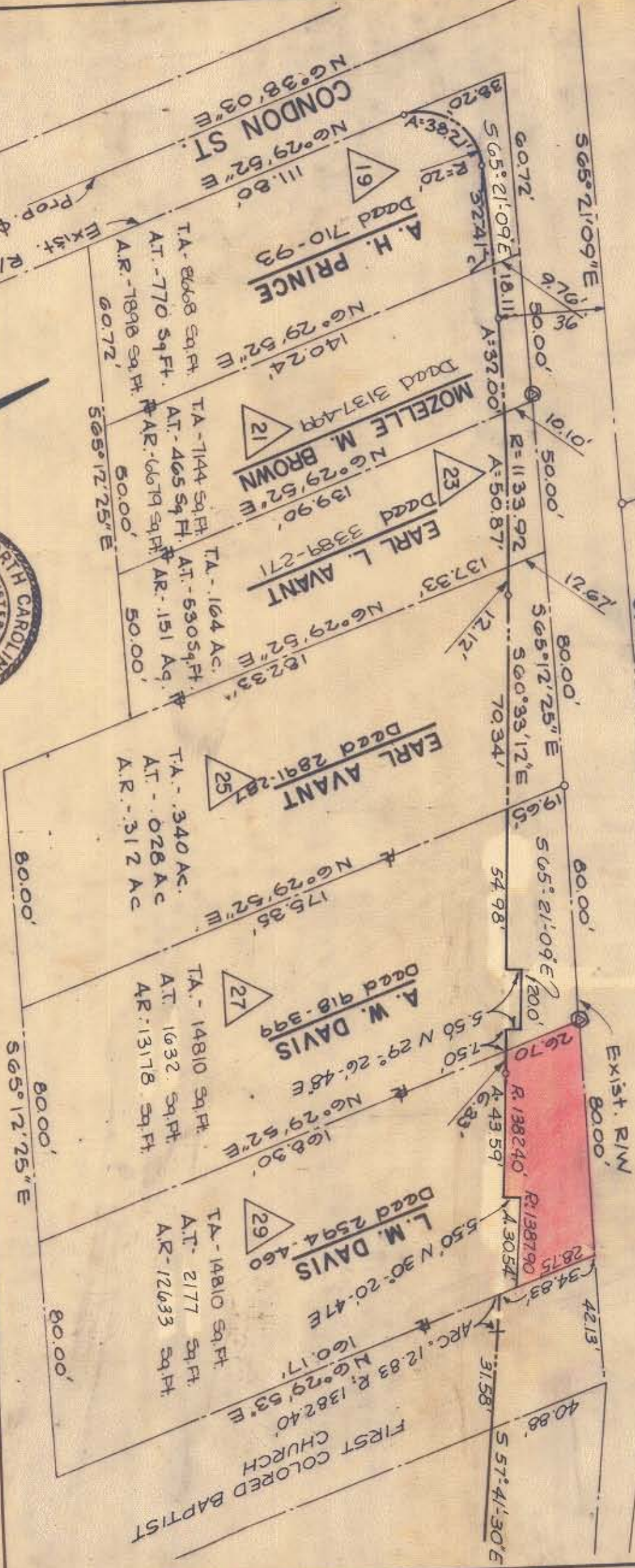


OAKLAWN AVE.



THIS PLAN WAS PREPARED UNDER THE SUPERVISION OF *Robert A. Foy*, P.E., ENGINEER NO. 4134. ALL DISTANCES WERE LOCATED BY ACTUAL SURVEY. BEARINGS ARE MAGNETIC OR MAGNETIC NORTH.

CITY OF CHARLOTTE NORTH CAROLINA DEPARTMENT OF PUBLIC WORKS ENGINEERING DIVISION	
REVISIONS APPROV. DATE R/W OFFSET PARCELS 21, 29 APR. 14, P.M.	DRAWN BY: K.P.S. CHECKED BY: CITY ENGINEER:
PROPOSED R/W OAKLAWN AVE. PROPERTY OF L.M. DAVIS	JOB NO. FILE NO. SHEET 29 OF 55
DATE: Sept 1972 SCALE: 1" = 40'	