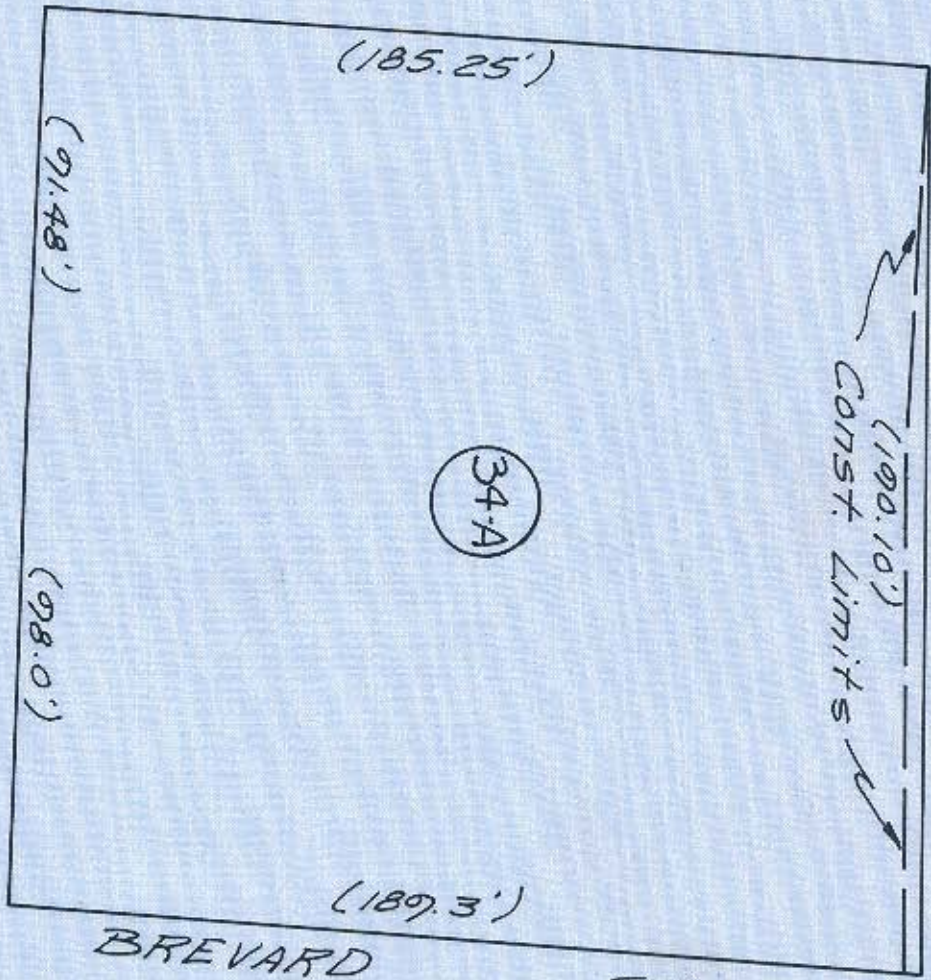


SIXTH ST.

(100.10')
CONST. LIMITS



Dead dimensions
are in parentheses
()



DEED BOOK 1556 PAGE 304 MAP 1-6
 BELK BROS. CO.
 BLOCK 43 LOT 2
 Scale: 1" = 40'

Wilbur Smith and Associates, Inc. Design
 CONSULTING ENGINEERS
 COLUMBIA, S. C. WINSTON-SALEM, N. C. RICHMOND, VA.

Sixth St Project
 NOV. 1966