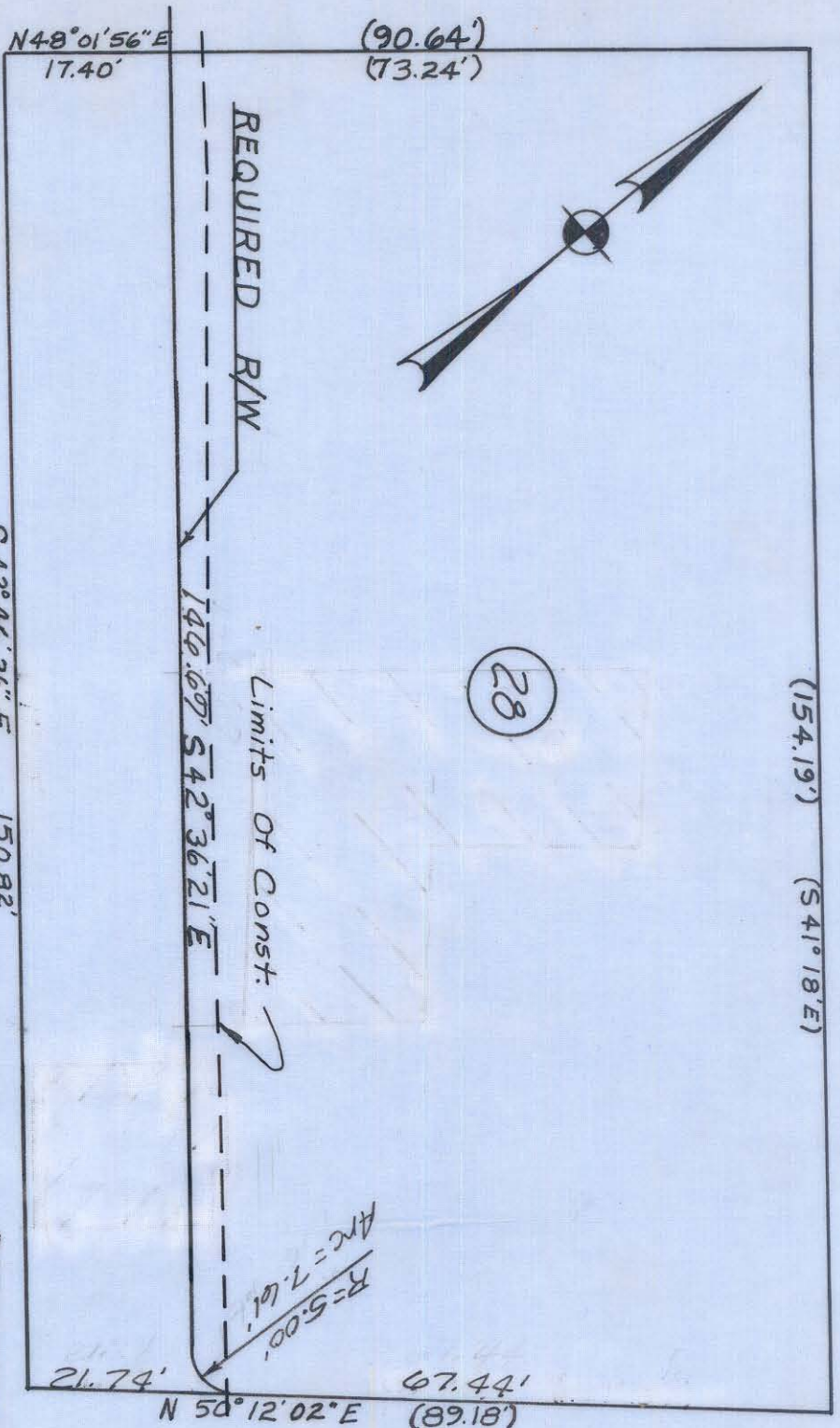


80-023-09



(154.19') (541° 18' E)

28

Area	Sq. Ft.
Taking	2601
Severance	11000
Total	13601

Dimensions in parentheses ()
are deed dimensions

WACHOVIA BANK & TRUST CO., TRUSTEE (F.F. JONES)
DEED BOOK 1434 PAGE 295
BLOCK 3 LOTS 8,9,10 MAP 1-2
SCALE 1" = 20'

Wilbur Smith and Associates, Inc. Design
CONSULTING ENGINEERS
COLUMBIA, S. C. WINSTON-SALEM, N. C. RICHMOND, VA.

SIXTH ST.
PROJECT
NOV. 1966

51