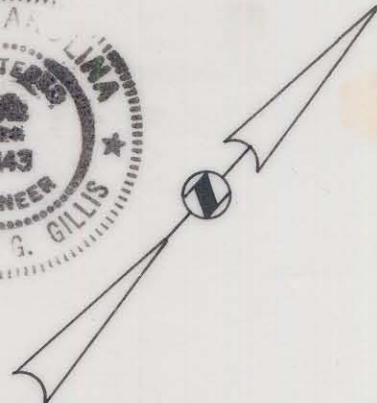
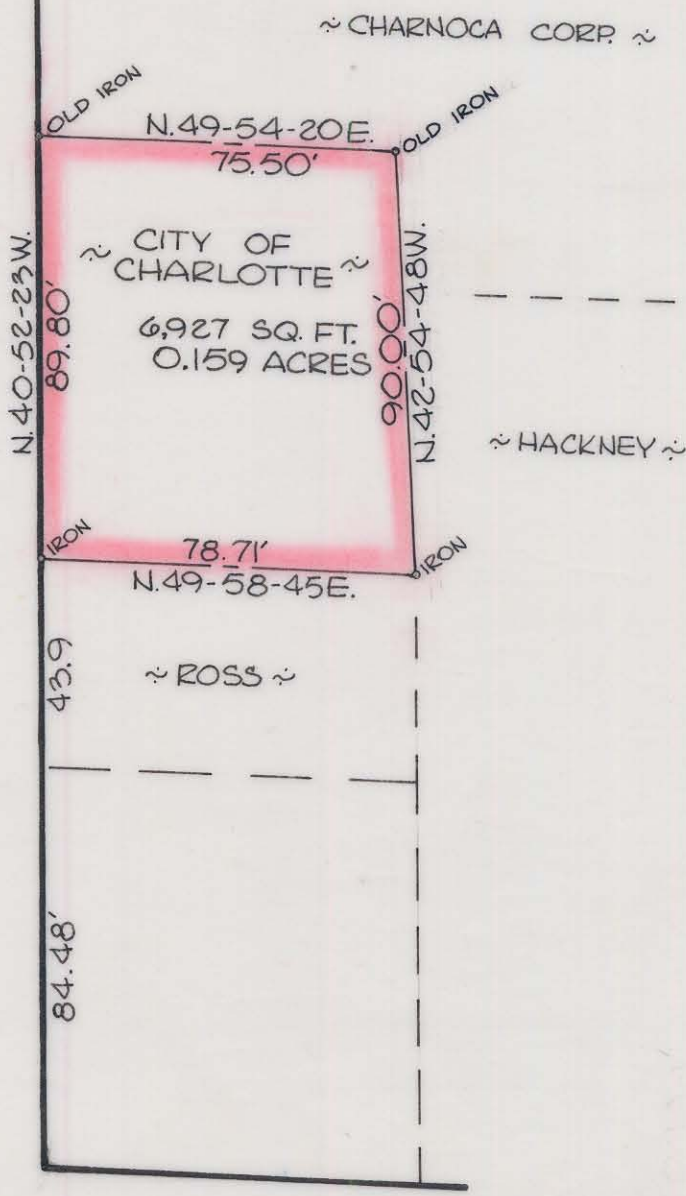


NOTE: Property corners shown circled were located by actual survey. Bearings are based on R/W MAP BY WILBUR SMITH & ASSOC.

This plat was prepared under my supervision R. B. Gillis
 N.C. Reg. Engineer No 4343



EAST SIXTH STREET



NORTH

CALDWELL STREET

CITY OF CHARLOTTE
 NORTH CAROLINA
 DEPARTMENT OF PUBLIC WORKS
 ENGINEERING DIVISION

REVISIONS	PROPERTY OF CITY OF CHARLOTTE	JOB NO. 512-74 -40
		FILE NO. RW-78
DRAWN BY CRAIG	EAST SIXTH STREET	SHEET 1
CHECKED BY JSS		OF 1
CITY ENGINEER	DATE MAR. 1974	SCALE 1" = 40'

80-057-01