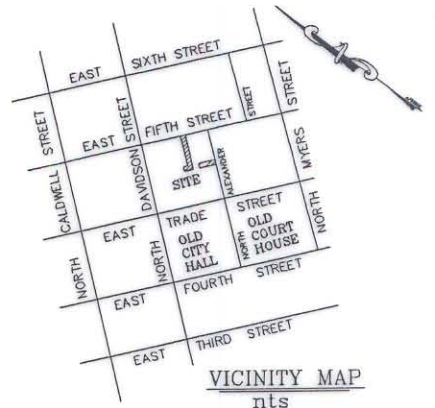
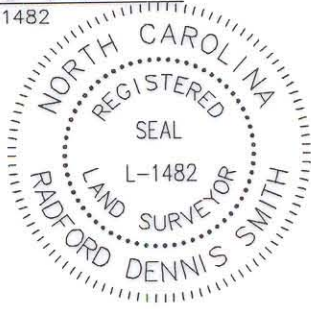


THIS PLAT WAS PREPARED UNDER MY SUPERVISION

R. Dennis Smith 3-9-94

NC REG. LAND SURVEYOR NO. L-1482

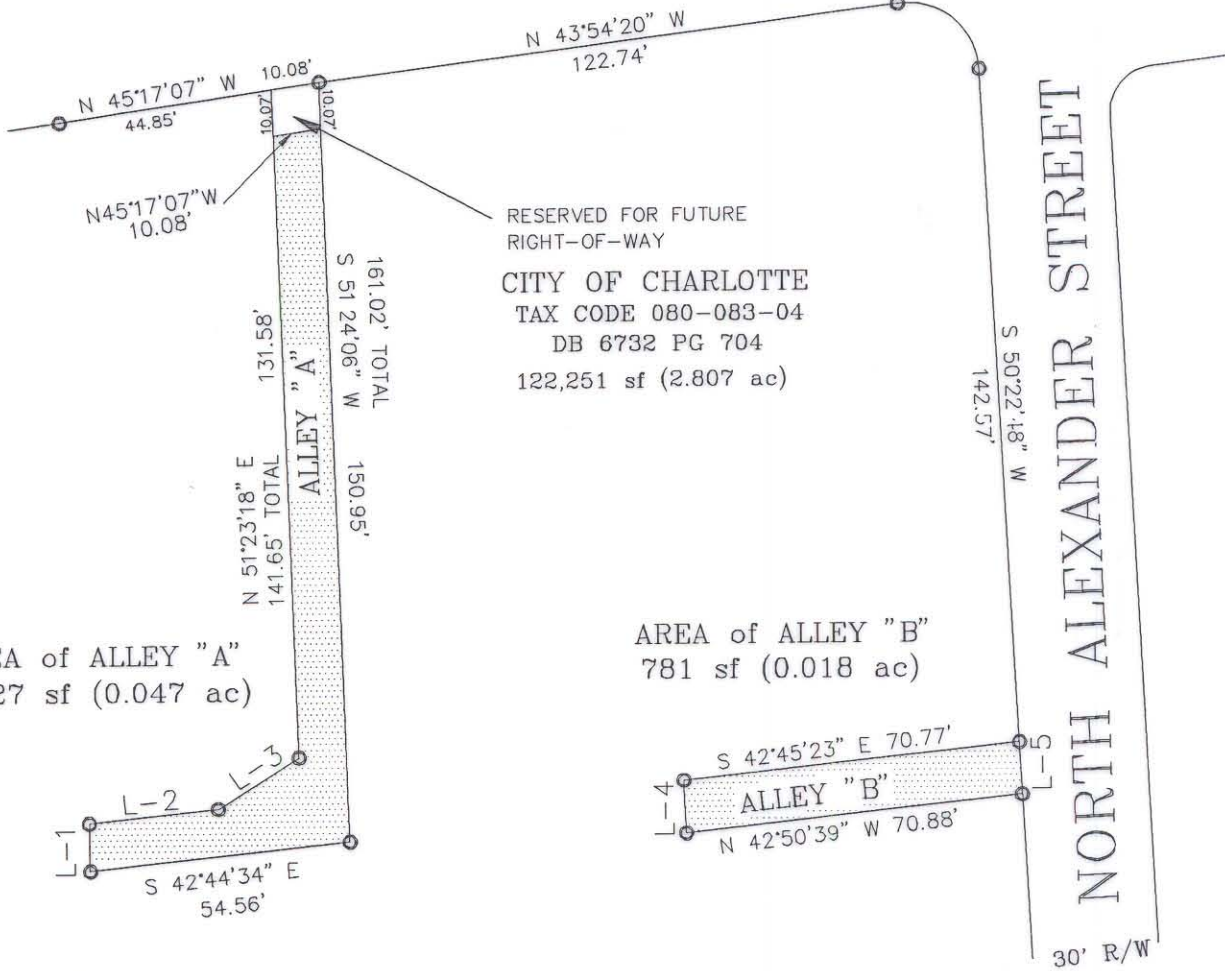


VICINITY MAP
nts

LINE	BEARING	DISTANCE
L-1	S52°14'36"W	10.06'
L-2	S42°45'57'E	27.12'
L-3	S68°58'15"E	19.99'
L-4	N50°52'48"E	11.12'
L-5	S50°19'12"W	11.00'

EAST FIFTH STREET
60' R/W

R = 15.00'
L = 24.83'
CHORD BEARING =
N 02°58'28" W
CHORD DIST. =
L = 22.09'



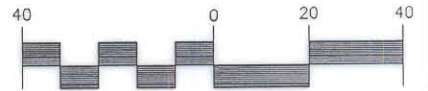
NOTE:

PREPARED FROM UNRECORDED SURVEY
BY THE CITY OF CHARLOTTE
ON 10-25-91

LEGEND

- IRON FOUND
- AREA TO ABANDON

GRAPHIC SCALE



(IN FEET)
1 inch = 40 ft.

PREPARED BY:
CITY OF CHARLOTTE
ENGINEERING DEPARTMENT
600 EAST FORTH STREET
CHARLOTTE, NC 28202
704-336-2291

CHARLOTTE ENGINEERING DEPARTMENT		
REVISIONS REV. R/W for 5th ST. 3-3-94 dhs DRAWN BY db CHECKED BY dhs SURVEY SUPVR. <i>RDS</i>	ABANDONMENT of ALLEY WAY PROPERTY OF CITY OF CHARLOTTE CHARLOTTE, MECKLENBURG COUNTY, NC	JOB NO. 291063 FILE NO. alley SHEET 1 OF 1
DATE 11-18-93	SCALE 1"=40'	

BK 0784 PG 0029/0033