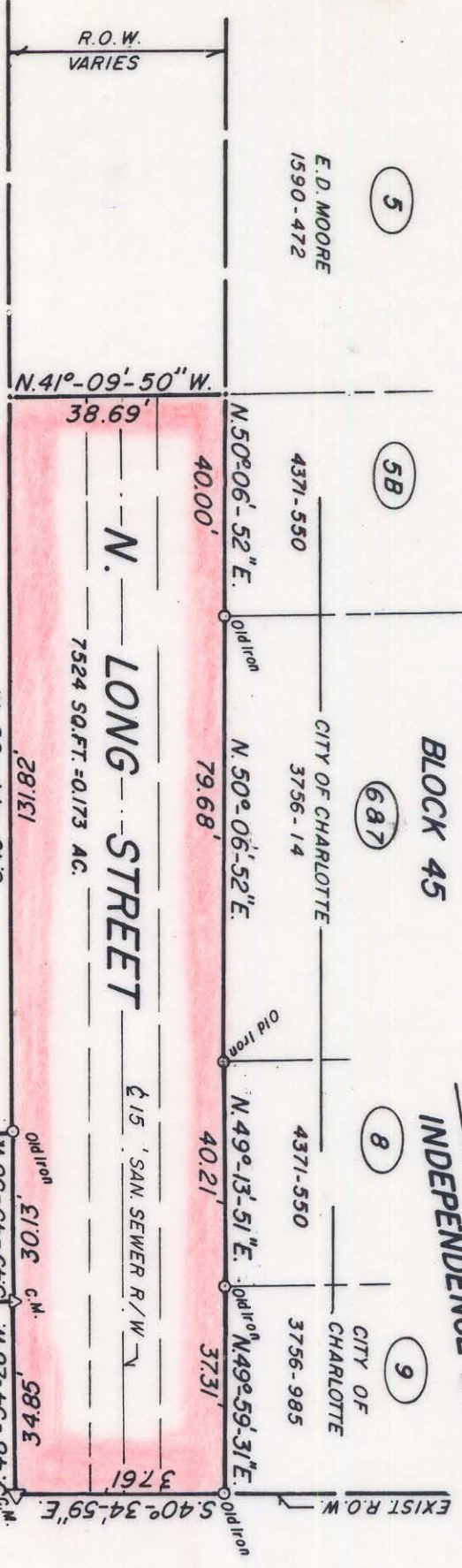
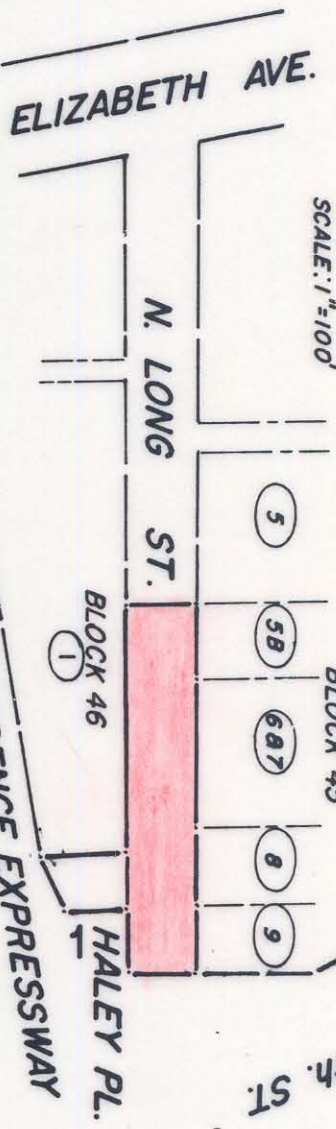


SCALE: 1"=100'



BLOCK 46
PARCEL (1)

CITY OF CHARLOTTE
2697-263

N. LONG STREET
7524 SQ. FT. = 0.173 AC.

BLOCK 45
(687)

E.D. MOORE
1590-472
(5)

4371-550
(5B)

CITY OF CHARLOTTE
3756-14
(8)

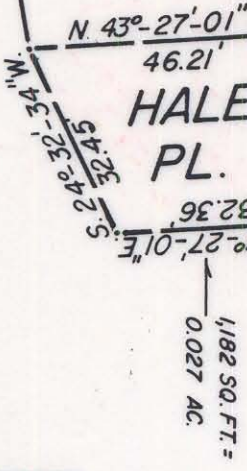
4371-550
(9)

CITY OF CHARLOTTE
3756-985
(9)

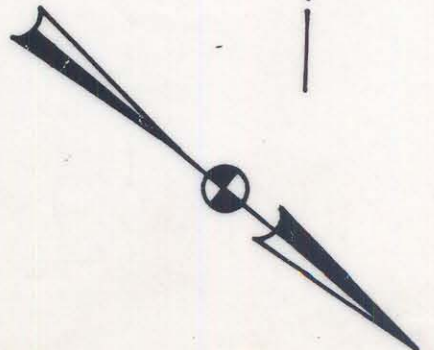
NOTE: Property corners shown circled were located by actual survey. Bearings are based on STATE HIGHWAY PLANS
PROJECT NO. 8-1654810

INDEPENDENCE EXPRESSWAY

EXIST. R.O.W.



E. FIFTH ST.



This plat was prepared under my supervision
Stephen Gilbert
 N. C. Reg. Surveyor No. L-1785



CITY OF CHARLOTTE NORTH CAROLINA DEPARTMENT OF PUBLIC WORKS ENGINEERING DIVISION	
REVISIONS 7-7-81: 15'-0" San. Sewer	PORTION OF RIGHT OF WAY TO BE ABANDONED NORTH LONG STREET FIRST WARD URBAN RENEWAL AREA PROJECT NO. N. C. R. 79
DRAWN BY M.S. CHECKED BY R.M. CITY ENGINEER	JOB NO. 512-75 FILE NO. 103
DATE: 7-7-81 SCALE: 1"=30'	SHEET 1 OF 2

80-092