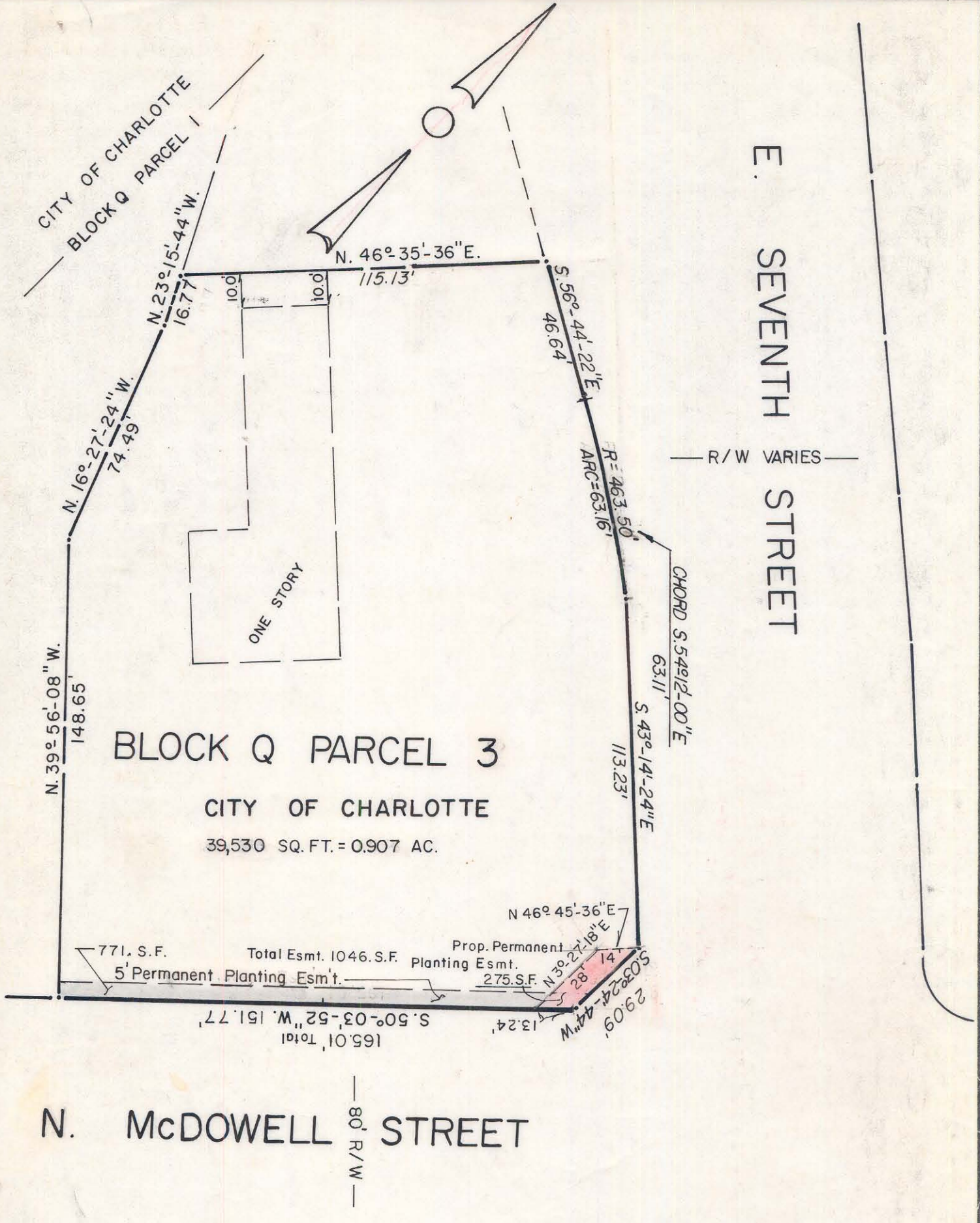


CITY OF CHARLOTTE  
BLOCK Q PARCEL 1

E. SEVENTH STREET

R/W VARIES



BLOCK Q PARCEL 3

CITY OF CHARLOTTE

39,530 SQ. FT. = 0.907 AC.

771. S.F. Total Esmt. 1046. S.F. Prop. Permanent Planting Esmt. 275. S.F.  
5' Permanent Planting Esmt. 165.01' Total  
S. 50° 03' 52\" W. 151.77'  
S. 43° 14' 24\" E. 113.23'  
S. 56° 44' 22\" E. 46.64'  
N. 46° 35' 36\" E. 115.13'  
N. 23° 15' 44\" W. 16.77'  
N. 16° 27' 24\" W. 74.49'  
N. 39° 56' 08\" W. 148.65'  
CHORD S. 54° 12' 00\" E. 63.11'  
R = 463.50' ARC = 63.16'  
N. 46° 45' 36\" E. 14'  
S. 03° 24' 44\" W. 29.09'  
N. 30° 21' 02\" E. 1.82'  
E. 81° 21' 02\" N. 1.82'

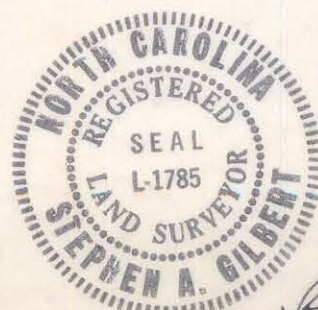
N. McDOWELL STREET

80' R/W

NOTE: Property corners shown circled were located by actual survey. Bearings are based on 1st. WARD PLAN BY

WILBUR SMITH & ASSOC.  
DATE: MAY 1975

This plat was prepared under my supervision Stephen A. Gilbert  
N. C. Reg. Surveyor No. L-1785



FIRST WARD URBAN RENEWAL		N.C. R-79
CITY OF CHARLOTTE NORTH CAROLINA DEPARTMENT OF PUBLIC WORKS ENGINEERING DIVISION		
<b>REVISIONS</b> 7TH. ST. R/W 8-25-83 9-8-83 Esmt. M.S. 1-12-84 Esmt.	<b>BOUNDARY SURVEY</b> AT McDOWELL ST. & 7th. ST. PROPERTY OF <b>CITY OF CHARLOTTE</b>	JOB NO. FILE NO. SHEET OF
DRAWN BY M. S. CHECKED BY <i>[Signature]</i> CITY ENGINEER	DATE JAN. 29, 1982 SCALE 1" = 40'	