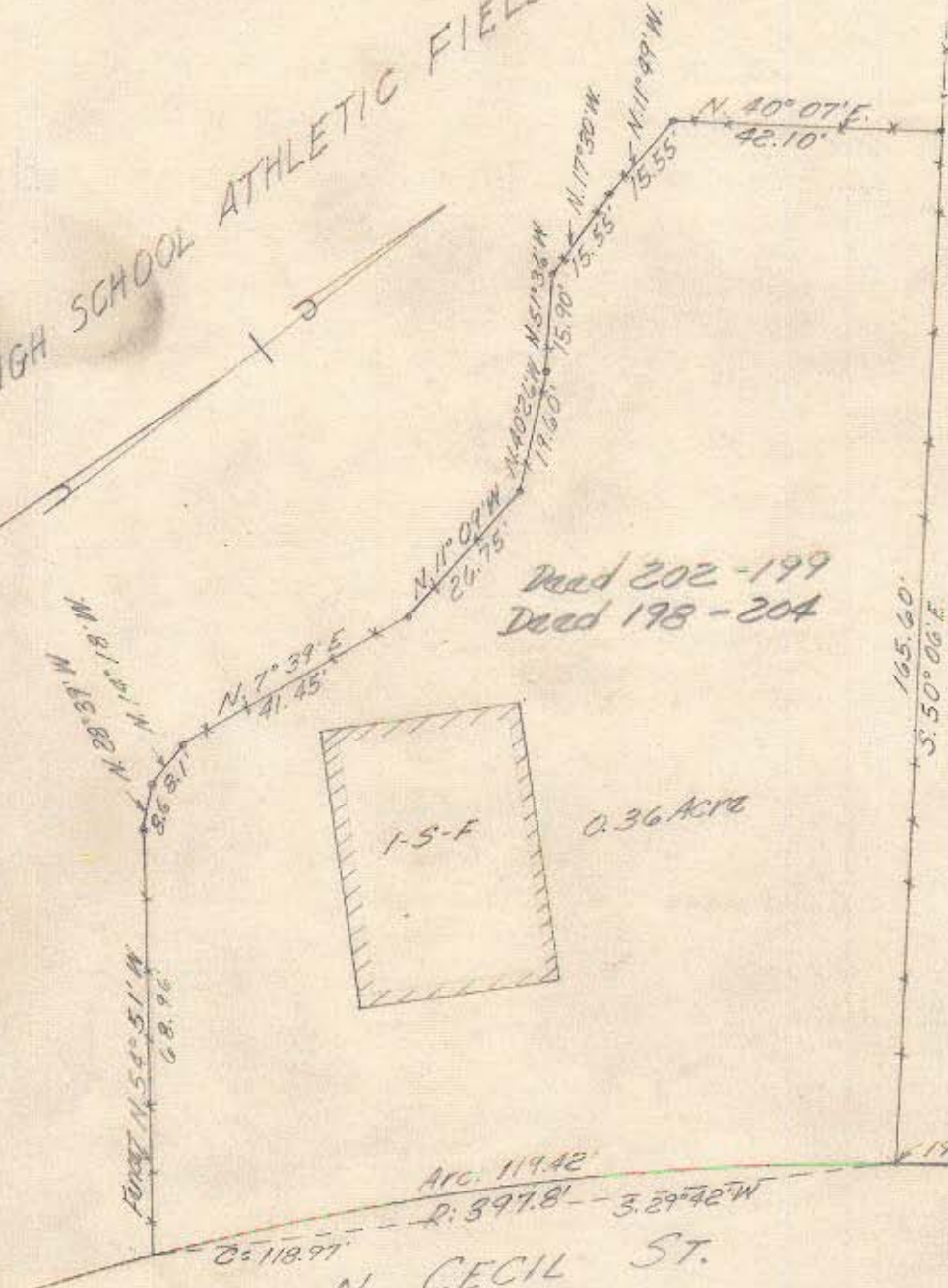


1590 #1

CENTRAL HIGH SCHOOL ATHLETIC FIELD



Deed 202-199
Deed 198-204

N. CECIL ST.
Kings Drive

MAP SHOWING
CHARLOTTE CHILDREN'S NATURE MUSEUM
Property of
CITY OF CHARLOTTE

Scale 1" = 30'
February 7, 1950
Office of City Engineer
Charlotte, N.C.