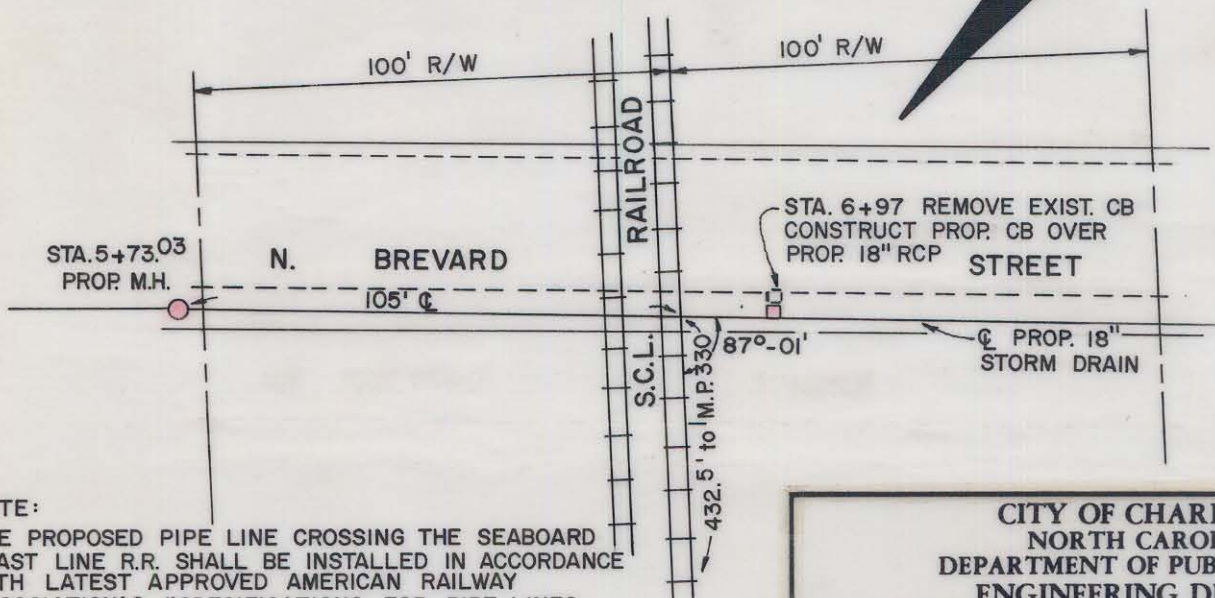
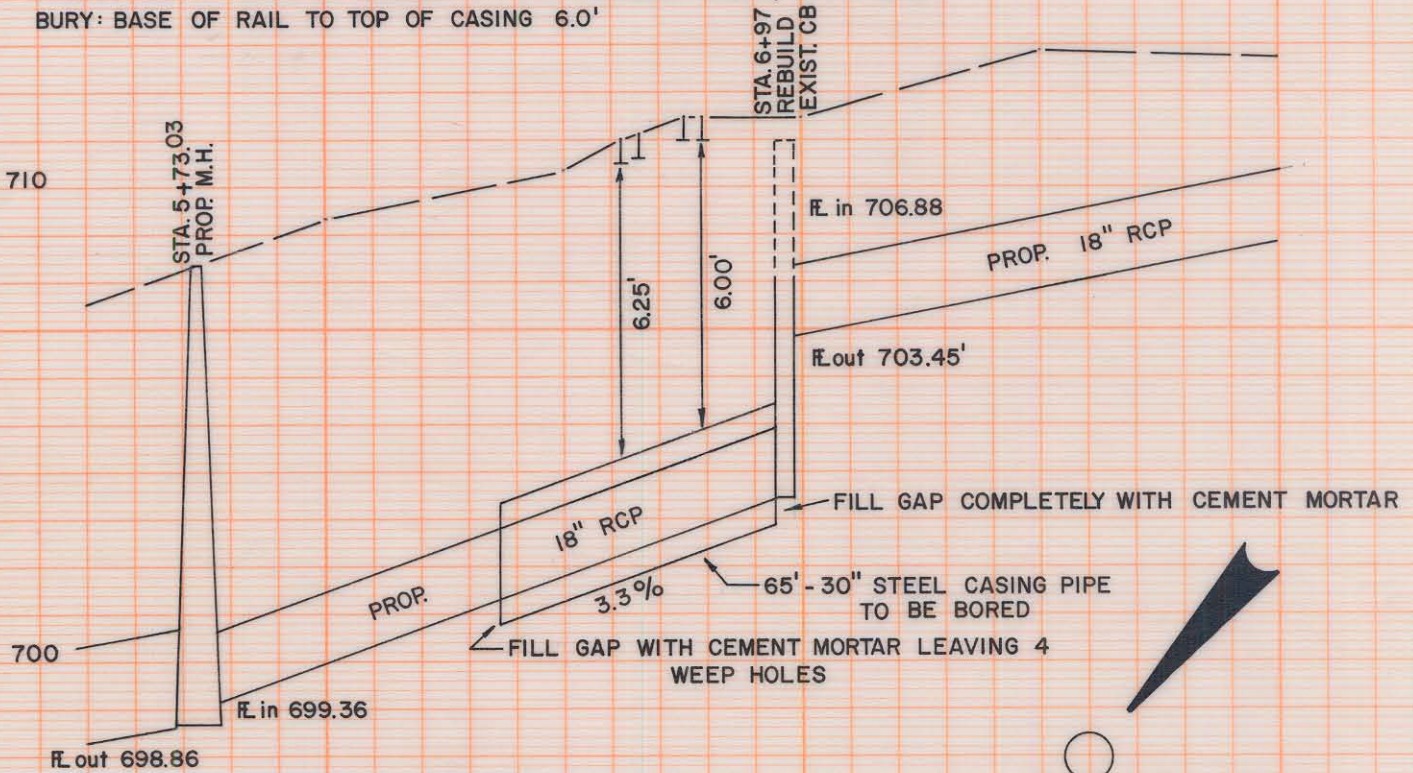


CONTENTS TO BE HANDLED  
 OUTSIDE DIAMETER  
 PIPE MATERIAL  
 SPECIFICATION AND GRADE  
 WALL THICKNESS  
 ACTUAL WORKING PRESSURE  
 TYPE OF JOINT  
 METHOD OF INSTALLATION

CARRIER PIPE  
 STORM DRAINAGE  
 24"  
 REINFORCED CONCRETE  
 CLASS 3  
 2.5"  
 GRAVITY  
 TONGUE and GROOVE  
 JACKING

CASING PIPE  
 ---  
 31.0"  
 STEEL  
 A-139 STRUCT. GRADE  
 0.50"  
 GRAVITY  
 WELDED  
 BORING

PROTECTION AT ENDS OF CASING: CEMENT GROUT, BOTH ENDS  
 BURY: BASE OF RAIL TO TOP OF CASING 6.0'



NOTE:  
 THE PROPOSED PIPE LINE CROSSING THE SEABOARD COAST LINE R.R. SHALL BE INSTALLED IN ACCORDANCE WITH LATEST APPROVED AMERICAN RAILWAY ASSOCIATION'S "SPECIFICATIONS FOR PIPE LINES FOR CONVEYING FLAMMABLE AND NONFLAMMABLE SUBSTANCES."

SCALES: PROFILE, VERT. 1" = 4' HOR. 1" = 40'  
 PLAN, 1" = 40"

*Void 5-18-74 955*

*081-035/045*

<b>CITY OF CHARLOTTE NORTH CAROLINA DEPARTMENT OF PUBLIC WORKS ENGINEERING DIVISION</b>		JOB NO. 512- 72-184
REVISIONS	STORM DRAIN SEWER ALONG <b>N. BREVARD STREET</b>	FILE NO. RW-74
DRAWN BY <i>RWM</i>	<b>SEABOARD COAST LINE RAILROAD</b>	SHEET 1
CHECKED BY <i>JSS</i>	DATE MAY, 1974	OF 1
CITY ENGINEER	SCALE S SHOWN	