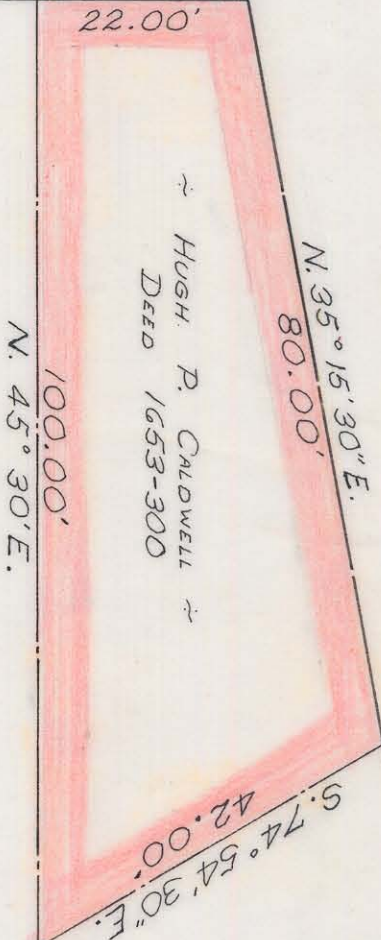


EAST 15TH STREET

NORTH McDOWELL STREET

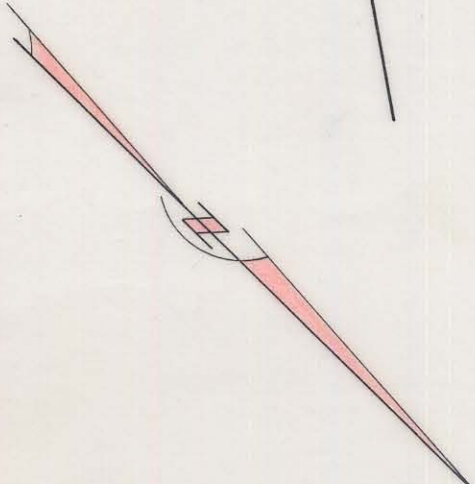
N. 44° 30' W.



HUGH P. CALDWELL  
DEED 1653-300

NOTE: Property corners shown circled were located by actual survey. Bearings are based on MAGNETIC NORTH

Approved by \_\_\_\_\_  
R/W Agent



This plat was prepared under my supervision  
*R. B. Bull*  
N.C. Reg. Engineer No. 4343



CITY OF CHARLOTTE NORTH CAROLINA ENGINEERING DEPARTMENT		JOB NO. 576-70
REVISIONS	SUGAR CR. IRWIN CR. OPEN SPACE PROJECT	FILE NO. 407
DRAWN BY G.R.H.	PROPERTY OF HUGH P. CALDWELL	SHEET 1
CHECKED BY L.E.Z.	DATE MARCH 1971	OF 1
CITY ENGINEER	SCALE 1"=20'	

81-098-17