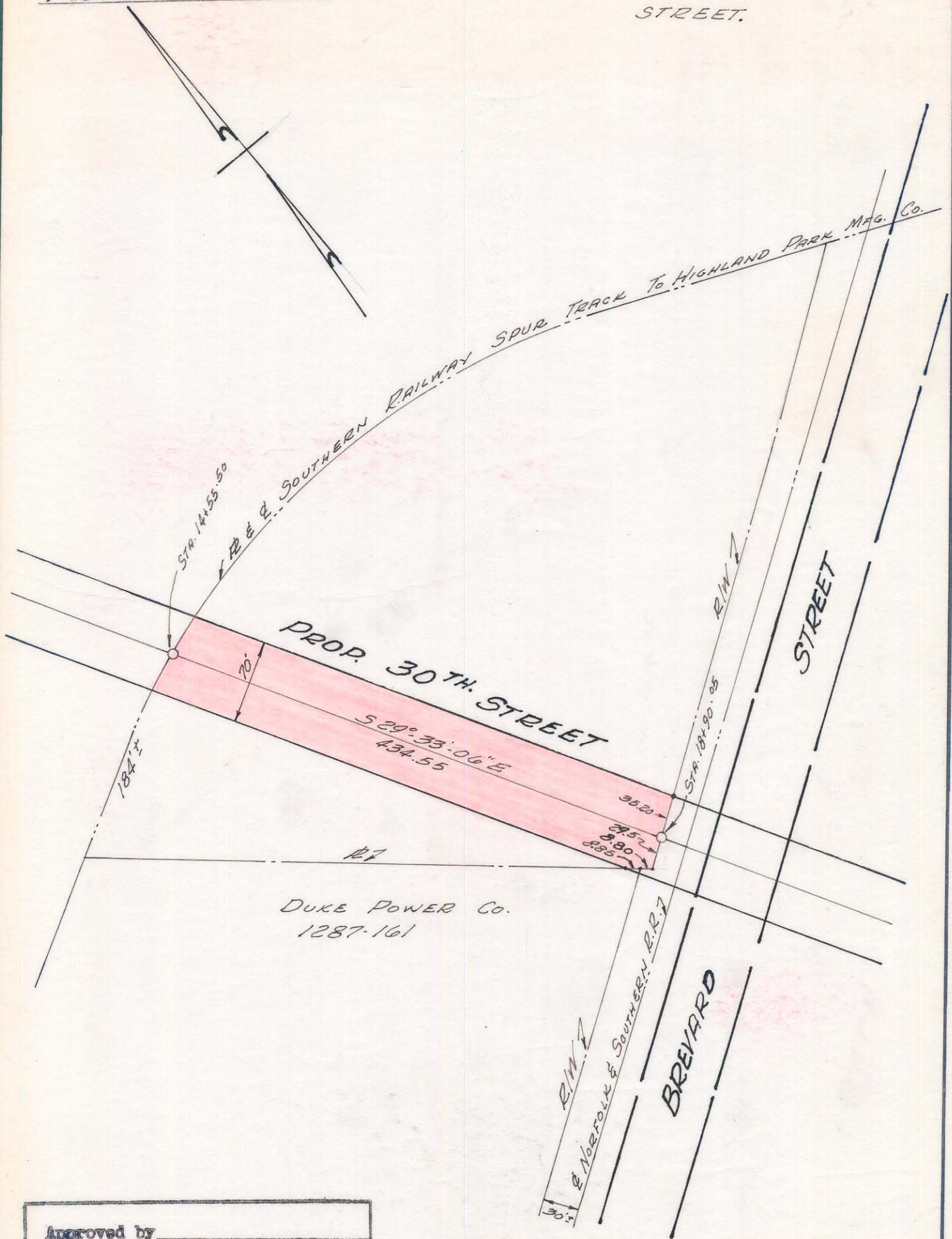


NOTE: Property corners shown circled were located by actual survey. Bearings are based on EAST 30TH STREET PROJECT

NOTE: THIS MAP WAS DRAWN FROM THE DESCRIPTION AND MAP PREPARED BY RALPH WHITEHEAD & ASSOCIATES OF E. 30TH STREET.



Approved by _____
R/W Agent

This plat was prepared under my supervision C. D. Reading
N.C. Reg. Engineer No. 36579

CITY OF CHARLOTTE NORTH CAROLINA ENGINEERING DEPARTMENT		
REVISIONS	EAST 30TH STREET	JOB NO.
		FILE NO.
DRAWN BY J.T.T.	PROPERTY OF STANDARD WAREHOUSE COMPANY	SHEET 3
CHECKED BY J.T.T.		OF 3
CITY ENGINEER	DATE JULY 1968 SCALE 1"=100'	

83-31-01