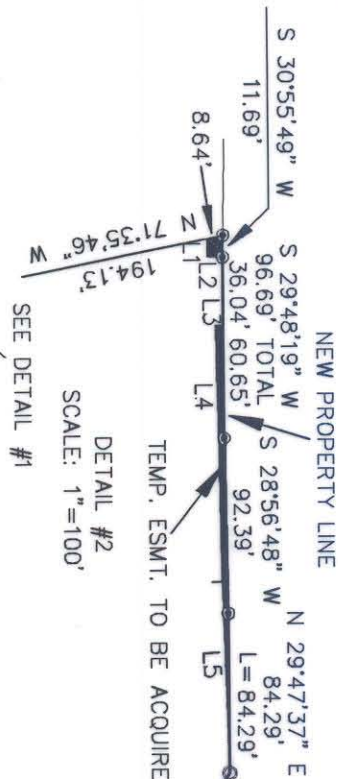
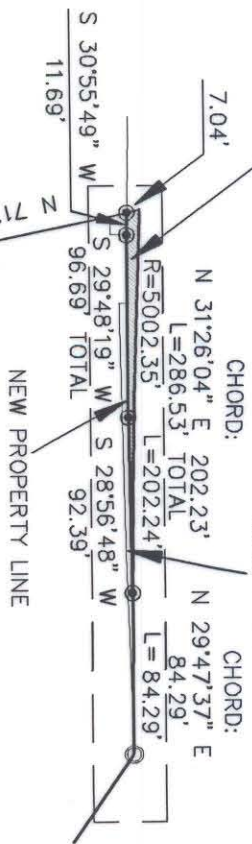


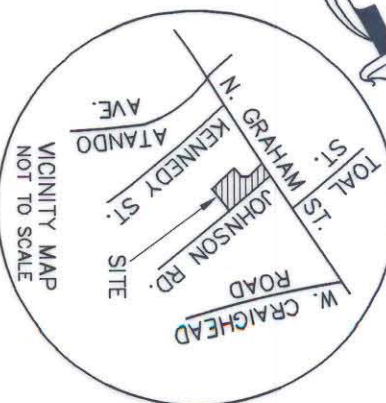
AREA TO BE ACQUIRED
SCALE: 1"=100'

DETAIL #1
SEE DETAIL #2
TEMP. CONST. EASEMENT LINE



DETAIL #2
SCALE: 1"=100'

PER N.C.D.O.T.
PROJECT NO. 8.1636601 (I-85)



NOTES

- 1) BEARINGS AND DISTANCES SHOWN IN PARENTHESES ARE BASED ON DEED INFORMATION.
- 2) BROKEN LINES INDICATE PROPERTY NOT SURVEYED.
- 3) TOTAL AREA BY DEED: 382,692 SQ. FT.
AREA ACQUIRED: 653 SQ. FT.
AREA REMAINING: 382,039 SQ. FT.
- 4) AREA OF TEMPORARY CONSTRUCTION EASEMENTS: 91 SQ. FT., 603 SQ. FT., 603 SQ. FT.

TOTAL: 694 SQ. FT.

GRAPHIC SCALE



(IN FEET)
1 inch = 200 ft.

PREPARED BY:
CITY OF CHARLOTTE
ENGINEERING DEPARTMENT
600 E. FOURTH STREET
CHARLOTTE, NC 28202-2844
(704) 336-2291

THURSTON MOTOR LINES, INC.

085-073-01
DB 5636 PG 806

LEGEND

- EXISTING IRON PIN
- IRON SET

BAY REALTY CO.

085-073-03
D.B. 3858-532

ROBERT TAFT, ET AL
085-073-17
DB 1863 PG 369

RAINBOW CIRCLE

TRUCK PARTS, INC.
085-073-16
DB 4954 PG 810

FREDERICKSON MOTOR EXPRESS CORP.
085-073-10
DB 2929 PG 333

SAM P. NIXON
085-073-05
DB 4843 PG 328

FREDERICKSON MOTOR EXPRESS CORP.
085-073-09
DB 3926 PG 454

FREDERICKSON MOTOR EXPRESS CORP.
085-073-04
DB 1313 PG 253

PERGAMOS INTERNATIONAL INVESTMENT
085-073-40
DB 4492 PG 724

JOHNSON ROAD

N. GRAHAM ST.

LINE	DIRECTION	DISTANCE	CONST. ESMT.
L1	S 30°20'41" W	9.90'	
L2	N 59°36'35" W	8.34'	
L3	S 60°11'19" E	4.21'	
L4	N 28°45'51" E	136.84'	
L5	N 28°01'32" E	100.55'	

THIS PLAT WAS PREPARED FOR THE PURPOSE OF ACQUISITION ONLY, AND IS NOT INTENDED TO BE A BOUNDARY SURVEY OF THE PROPERTY SHOWN.

THIS PLAT WAS PREPARED UNDER MY SUPERVISION
R Dennis Smith 11-17-93
N.C. REG. LAND SURVEYOR NO. L-1482



CHARLOTTE

ENGINEERING DEPARTMENT

N. GRAHAM ST. SIDEWALK
DALTON AVE. TO I-85
SIDEWALK PROGRAM 90-3

PROPERTY OF

PERGAMOS INTERNATIONAL INVESTMENTS
CITY OF CHARLOTTE, MECK. CO., N.C.

REVISIONS	DATE	SCALE	JOB NO.
11/93 - OWNER SPELLING CORRECTION DRAWN BY CED CHECKED BY <i>RDS</i> SURVEY SUPER.	05-19-93	1"=200'	92033

FILE NO. 92033
SHEET 1 OF 1

85-073-40