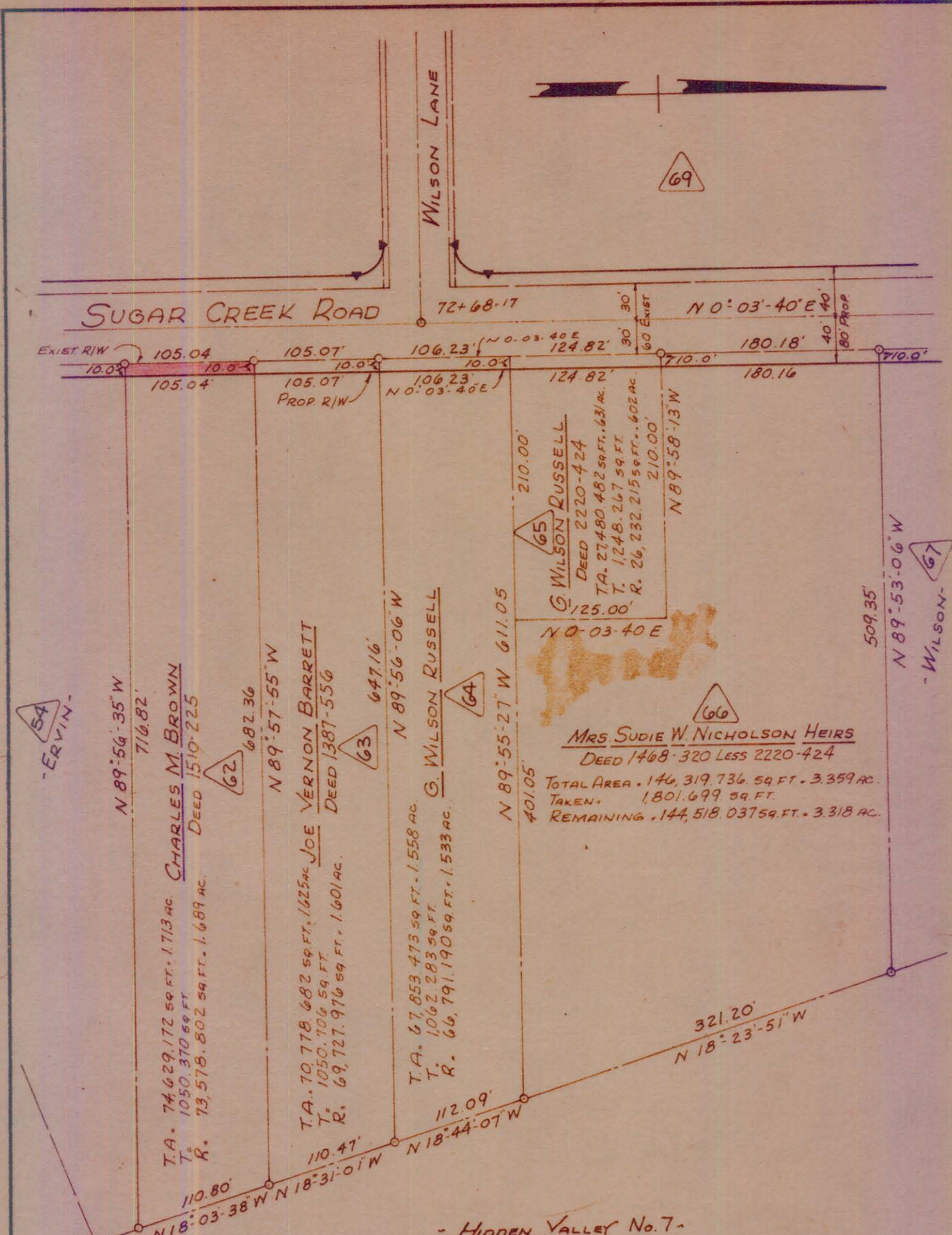


39-06



54  
- ERVIN -

N 89° 56' 35" W  
716.82'

T.A. 74,629.172 sq. FT. 1.713 ac.  
T. 1050.370 sq. FT.  
R. 73,578.802 sq. FT. 1.689 ac.  
CHARLES M. BROWN  
DEED 1510-225

62

N 89° 57' 55" W  
682.36'

T.A. 70,778.682 sq. FT. 1.625 ac.  
T. 1050.706 sq. FT.  
R. 69,727.976 sq. FT. 1.601 ac.  
JOE VERNON BARRETT  
DEED 1387-556

63

647.16'

T.A. 67,853.473 sq. FT. 1.558 ac.  
T. 1062.283 sq. FT.  
R. 66,791.190 sq. FT. 1.533 ac.  
G. WILSON RUSSELL

64

N 89° 55' 27" W 611.05'

T.A. 27,480.482 sq. FT. 0.631 ac.  
T. 1,248.267 sq. FT.  
R. 26,232.215 sq. FT. 0.602 ac.  
G. WILSON RUSSELL  
DEED 2220-424

65

MRS. SUDIE W. NICHOLSON HEIRS  
DEED 1468-320 LESS 2220-424

TOTAL AREA . 146,319.736 sq. FT. 3.359 ac.  
TAKEN . 1,801.699 sq. FT.  
REMAINING . 144,518.037 sq. FT. 3.318 ac.

66

509.35'

67  
- WILSON -

- HIDDEN VALLEY No. 7 -

STATE PROJ. NO. G.801826

This plat was prepared under my supervision C.D. Reading  
N.C. Reg. Engineer No. 3659

Approved by \_\_\_\_\_  
R/W Agent

NOTE: Property corners shown circled were located by actual survey. Bearings are based on BOUNDARY OF SUGAR CK. PRESBY CHURCH BY A.A. WALLWORK 1965



CITY OF CHARLOTTE NORTH CAROLINA ENGINEERING DEPARTMENT		
REVISIONS	PROPOSED R/W SUGAR CREEK ROAD	JOB NO.
DRAWN BY WHITE	PROPERTY OF CHARLES M. BROWN	FILE NO.
CHECKED BY J.T.T.		SHEET 62
CITY ENGINEER	DATE	OF 70
	SCALE 1" = 100'	

039-064-38