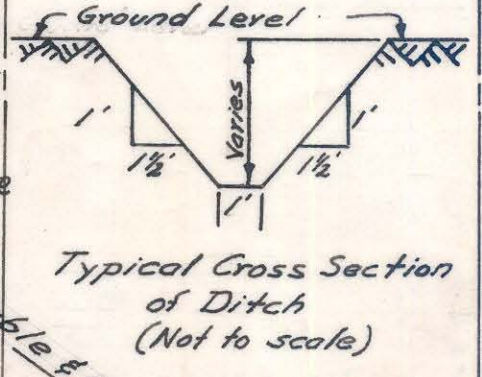
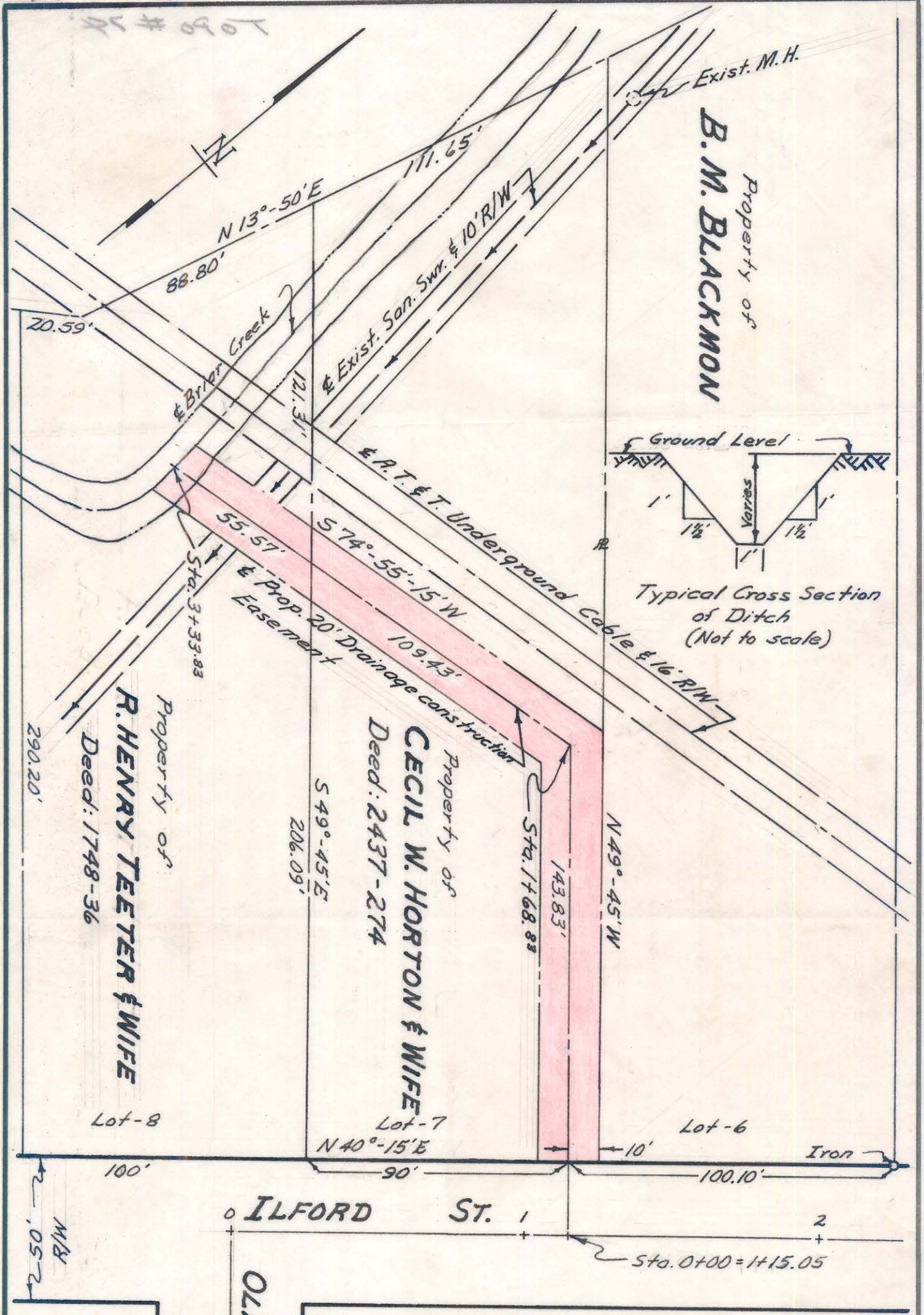


A-7-H-101

A-7-H-101

Lot # 9901



CITY OF CHARLOTTE NORTH CAROLINA ENGINEERING DEPARTMENT		
REVISIONS	Properties of C.W. HORTON & R.H. TEETER	JOB NO. 573-64
	Drainage Const. Easement	FILE NO. -362
DRAWN BY R. Smith	ILFORD ST.	SHEET 1
CHECKED BY CR	DATE 12/31/64	OF 1
CITY ENGINEER Lucas	SCALE 1"=40'	

A-7-H-101

099-102-81/80/83

A-7-H-101