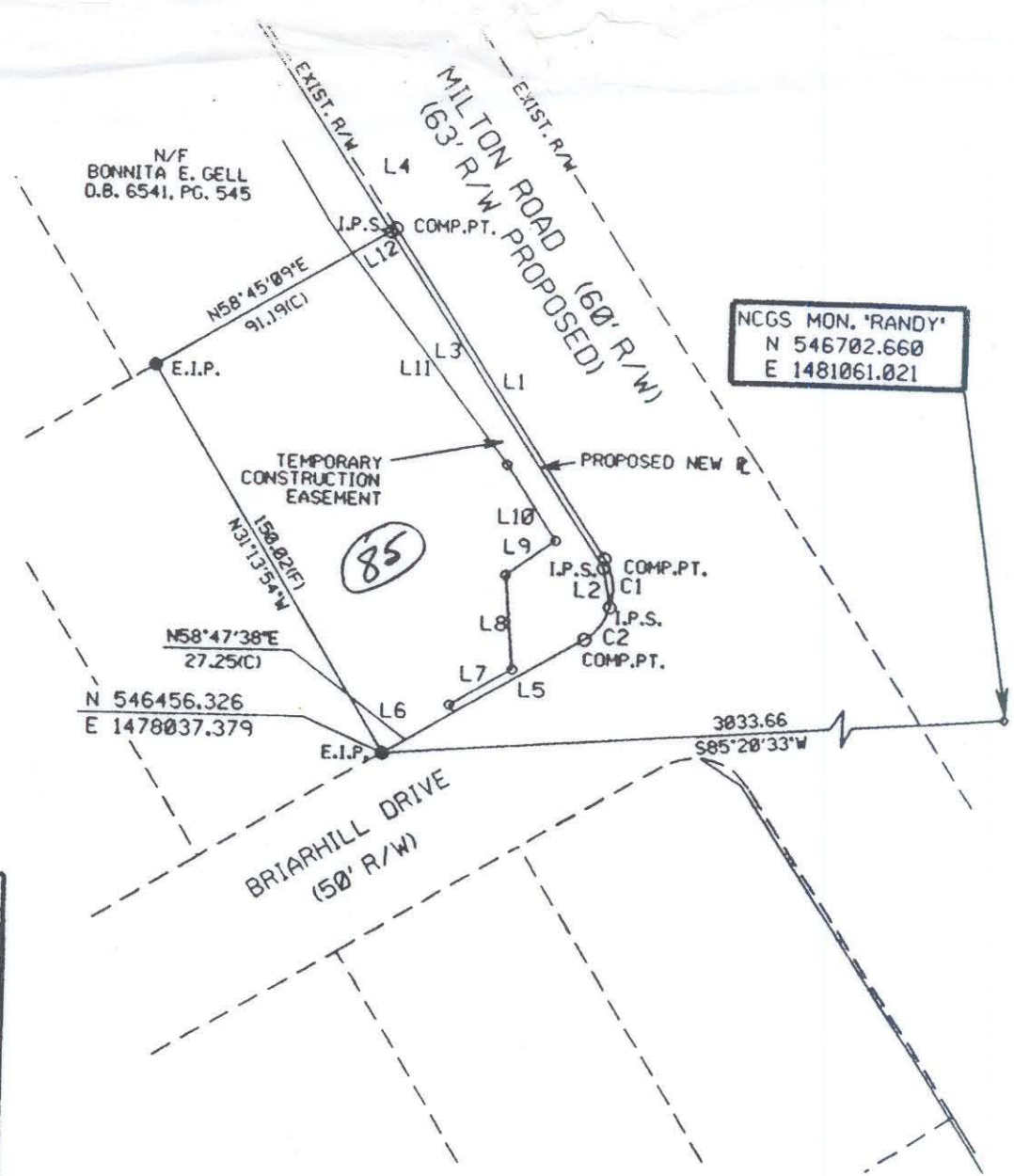


N.C. GRID - N.A.D. 83
 COMBINED SCALE FACTOR = 0.9998362



NCGS MON. 'RANDY'
 N 546702.660
 E 1481061.021

TEMP. CONST. EASEMENT		
LINE	BEARING	DIST.
L5	S58-47-38W	49.56
L6	N31-13-52W	3.02
L7	N58-46-43E	24.00
L8	N05-23-07W	31.66
L9	N53-43-48E	20.03
L10	N33-24-26W	30.00
L11	N37-24-45W	87.32
L12	N58-45-09E	14.61
L3	S33-24-29E	132.55
L2	S10-54-17E	13.28
C2	RAD = 20.00 ARC = 13.97	
CHORD	S36-36-00W	13.69
DELTA	40-01-41	

PARCEL AREA DATA		
DESC.	SQ. FT.	AC.
TOTAL PARCEL AREA	14012	0.322
TOTAL AREA ACQUIRED	298	0.007
AREA REMAINING	13714	0.315
TOTAL TEMP. CONST. EASE.	2440	0.056

AREA ACQUIRED		
LINE	BEARING	DIST.
L1	S33-22-40E	130.19
C1	RAD = 20.00 ARC = 16.68	
CHORD	S07-18-35E	16.20
DELTA	47-46-56	
L2	N10-54-17W	13.28
L3	N33-24-29W	132.55
L4	N58-45-09E	2.11

I, Bradley Lloyd Hunter, certify that this plat was drawn under my supervision. This plat is a compilation of field and deed data and is NOT intended to be a boundary survey of the property shown.



Bradley Lloyd Hunter

Bradley Lloyd Hunter, NCRLS • L-3565

- REFERENCES:
- 1) NCGS MONUMENTS 'RANDY' AND 'TAYLOR'.
 - 2) CHARLOTTE ENG. DEPT. R/W PLANS FOR PROPOSED MILTON RD. IMPROVEMENTS PREP. BY PBS&J, CHARLOTTE, DATED 10/25/93. (PARCEL #85)
 - 3) D.B. 5867, PP. 302-303.
 - 4) D.B. 2369, PG. 177.

- NOTES:
- 1) EIP DENOTES EXISTING IRON PIPE.
 - 2) IPS DENOTES IRON PIPE SET.
 - 3) ALL DISTANCES ARE HORIZONTAL GROUND.
 - 4) AREAS BY COORDINATE COMPUTATION.
 - 5) (C) DENOTES COMPUTED.
 - 6) (F) DENOTES FIELD MEASUREMENT.



PRELIMINARY
 NOT FOR RECORDATION,
 CONVEYANCES, OR SALES

CHARLOTTE ENGINEERING DEPARTMENT

MILTON ROAD IMPROVEMENTS
 PROJECT NO. 512-89-062

PROPERTY OF
 CLIFFORD V. JONES AND WIFE TERESA P. JONES
 TAX MAP CODE 99-166-PARCEL 26
 CITY OF CHARLOTTE, MECKLENBURG COUNTY, N.C.

REVISIONS
 W 1/28/94

DRAWN BY D.B.L.
 CHECKED BY B.L.H.

JOB NO. 24-844.15
 DWG NO. MILT08LOOH
 SHEET 1 OF

99-165-26