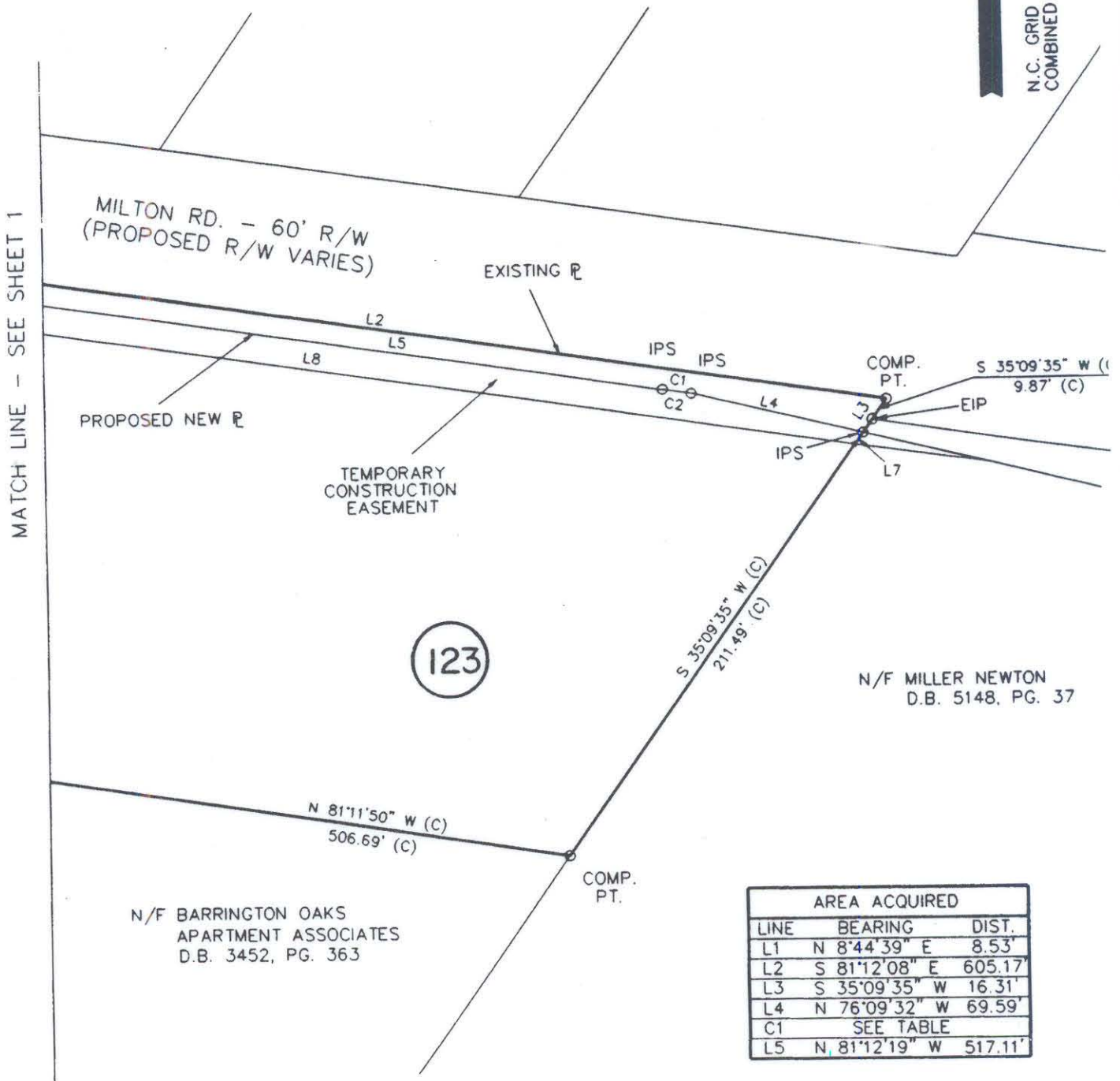


This map is not a certified survey and no reliance may be placed it its accuracy

CURVE DATA TABLE						
DESC.	DELTA	RADIUS	LENGTH	TANGENT	CHBRG	CHDIST
C1	0°03'26"	11497.66'	11.48'	5.74'	N 81°14'02" W	11.48'
C2	0°03'26"	11497.66'	11.48'	5.74'	S 81°14'02" E	11.48'

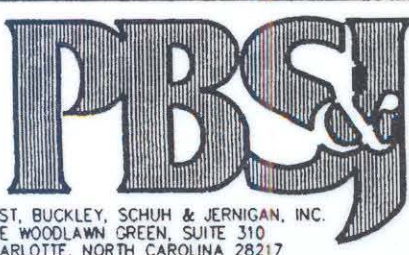
N.C. GRID - N.A.D. 83
 COMBINED SCALE FACTOR = 9998.362



AREA ACQUIRED		
LINE	BEARING	DIST.
L1	N 8°44'39" E	8.53'
L2	S 81°12'08" E	605.17'
L3	S 35°09'35" W	16.31'
L4	N 76°09'32" W	69.59'
C1	SEE TABLE	
L5	N 81°12'19" W	517.11'

TEMP. CONST. EASEMENT		
LINE	BEARING	DIST.
L6	N 8°44'39" E	11.50'
L5	S 81°12'19" E	517.11'
C2	SEE TABLE	
L4	S 76°09'32" E	69.59'
L7	S 35°09'35" W	5.71'
L8	N 81°13'50" W	595.37'

PARCEL AREA DATA		
DESC.	SQ. FT.	AC.
TOTAL PARCEL	110249	2.53
TOTAL AREA ACQ.'D	5357	0.12
TOTAL PERM. UTILITY EASE. (A)	35	n/a
TOTAL PERM. UTILITY EASE. (B)	35	n/a
AREA REMAINING	104822	2.41
TOTAL TEMP. CONST. EASE.	6577	0.15



POST, BUCKLEY, SCHUH & JERNIGAN, INC.
ONE WOODLAWN GREEN, SUITE 310
CHARLOTTE, NORTH CAROLINA 28217

99-211-23

 CHARLOTTE ENGINEERING DEPARTMENT		JOB NO. 28-048.1
MILTON ROAD IMPROVEMENTS PROJECT NO. 512-89-062		DWG NO. ML11230C
PROPERTY OF LLOYD F. BAUCOM TAX MAP CODE 99-211-PARCEL 4 CITY OF CHARLOTTE, MECKLENBURG COUNTY, N.C.		SHEET 2
DRAWN BY B.L.H. CHECKED BY D.S.L. SURVEY SUPR.	DATE 4/28/95	OF 2
SCALE 1" = 60'		