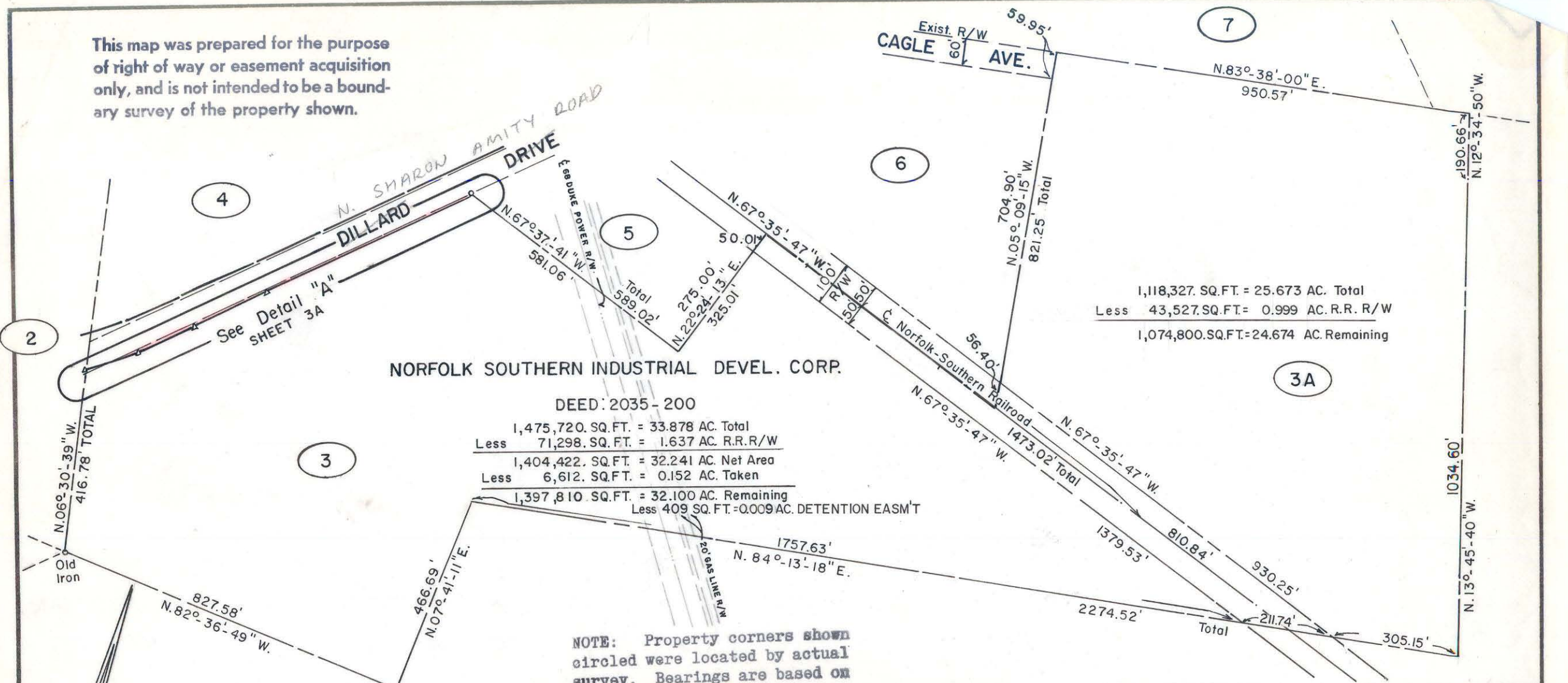


This map was prepared for the purpose of right of way or easement acquisition only, and is not intended to be a boundary survey of the property shown.



1,118,327. SQ. FT. = 25.673 AC. Total
 Less 43,527. SQ. FT. = 0.999 AC. R.R. R/W
 1,074,800. SQ. FT. = 24.674 AC. Remaining

NORFOLK SOUTHERN INDUSTRIAL DEVEL. CORP.

DEED: 2035-200

1,475,720. SQ. FT. = 33.878 AC. Total
 Less 71,298. SQ. FT. = 1.637 AC. R.R. R/W
 1,404,422. SQ. FT. = 32.241 AC. Net Area
 Less 6,612. SQ. FT. = 0.152 AC. Taken
 1,397,810. SQ. FT. = 32.100 AC. Remaining
 Less 409 SQ. FT. = 0.009 AC. DETENTION EASM'T

NOTE: Property corners shown circled were located by actual survey. Bearings are based on N. C. COORDINATE SYSTEM

TOTAL OF PARCEL 3 AND 3-A

2,594,047. SQ. FT. = 59.551 AC. Total
 Less 114,825. SQ. FT. = 2.636 AC. R.R. R/W
 2,479,222. SQ. FT. = 56.915 AC. Net Area
 Less 6,612. SQ. FT. = 0.152 AC. Taken
 2,472,610. SQ. FT. = 56.763 AC. Remaining
 Less 409 SQ. FT. = 0.009 AC. DETENTION EASM'T

This plat was prepared under my supervision Stephen A. Gilbert
 N. C. Reg. Surveyor No. L-1785



CITY OF CHARLOTTE NORTH CAROLINA DEPARTMENT OF PUBLIC WORKS ENGINEERING DIVISION		
REVISIONS	PROPOSED R/W	JOB NO.
EASM'T R.W.M. 11-15-78	N. SHARON AMITY ROAD EXT.	512-74-224
	PROPERTY OF NORFOLK SOUTHERN INDUSTRIAL DEVEL. CORP.	FILE NO. RW-156
DRAWN BY MAS		SHEET 3
CHECKED BY RW		OF 15
CITY ENGINEER	DATE MAY 12 1978 SCALE NONE	

099-241-02 / 99-251